

**UBE2A/B Polyclonal Antibody**

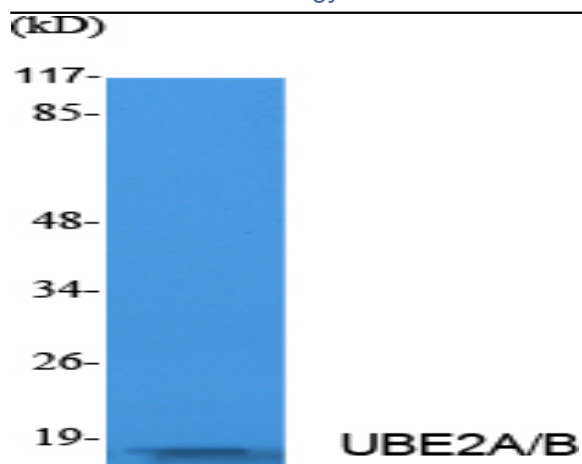
<b>Catalog No :</b>	YT5081
<b>Reactivity :</b>	Human;Mouse;Rat
<b>Applications :</b>	WB;IHC;IF;ELISA
<b>Target :</b>	UBE2A/B
<b>Fields :</b>	>>Ubiquitin mediated proteolysis
<b>Gene Name :</b>	UBE2A/UBE2B
<b>Protein Name :</b>	Ubiquitin-conjugating enzyme E2 A/Ubiquitin-conjugating enzyme E2 B
<b>Human Gene Id :</b>	7320
<b>Human Swiss Prot No :</b>	P49459/P63146
<b>Rat Gene Id :</b>	81816
<b>Rat Swiss Prot No :</b>	P63149
<b>Immunogen :</b>	Synthesized peptide derived from the C-terminal region of human UBE2A/B.
<b>Specificity :</b>	UBE2A/B Polyclonal Antibody detects endogenous levels of UBE2A/B protein.
<b>Formulation :</b>	Liquid in PBS containing 50% glycerol, 0.5% BSA and 0.02% sodium azide.
<b>Source :</b>	Polyclonal, Rabbit,IgG
<b>Dilution :</b>	WB 1:500 - 1:2000. IHC: 1:100-300 ELISA: 1:10000.. IF 1:50-200
<b>Purification :</b>	The antibody was affinity-purified from rabbit antiserum by affinity-chromatography using epitope-specific immunogen.
<b>Concentration :</b>	1 mg/ml

---

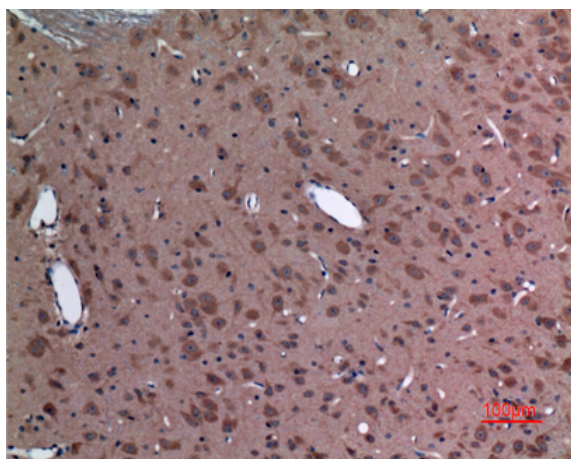
<b>Storage Stability :</b>	-15°C to -25°C/1 year(Do not lower than -25°C)
<b>Observed Band :</b>	17kD
<b>Cell Pathway :</b>	Ubiquitin mediated proteolysis;
<b>Background :</b>	<p>The modification of proteins with ubiquitin is an important cellular mechanism for targeting abnormal or short-lived proteins for degradation. Ubiquitination involves at least three classes of enzymes: ubiquitin-activating enzymes, ubiquitin-conjugating enzymes, and ubiquitin-protein ligases. This gene encodes a member of the E2 ubiquitin-conjugating enzyme family. This enzyme is required for post-replicative DNA damage repair, and may play a role in transcriptional regulation. Mutations in this gene are associated with mental retardation. Alternative splicing results in multiple transcript variants. [provided by RefSeq, Aug 2013],</p>
<b>Function :</b>	<p>catalytic activity:ATP + ubiquitin + protein lysine = AMP + diphosphate + protein N-ubiquityllysine.,caution:The sequence shown here is derived from an Ensembl automatic analysis pipeline and should be considered as preliminary data.,function:Catalyzes the covalent attachment of ubiquitin to other proteins. Required for postreplication repair of UV-damaged DNA.,pathway:Protein modification; protein ubiquitination.,similarity:Belongs to the ubiquitin-conjugating enzyme family.,subunit:Interacts with RAD18.,</p>
<b>Subcellular Location :</b>	chromatin,nuclear chromatin,XY body,cytoplasm,cytosol,HULC complex,
<b>Expression :</b>	Lung,Skin,Subthalamic nucleus,Thyroid,
<b>Sort :</b>	23857
<b>No4 :</b>	1
<b>Host :</b>	Rabbit
<b>Modifications :</b>	Unmodified

---

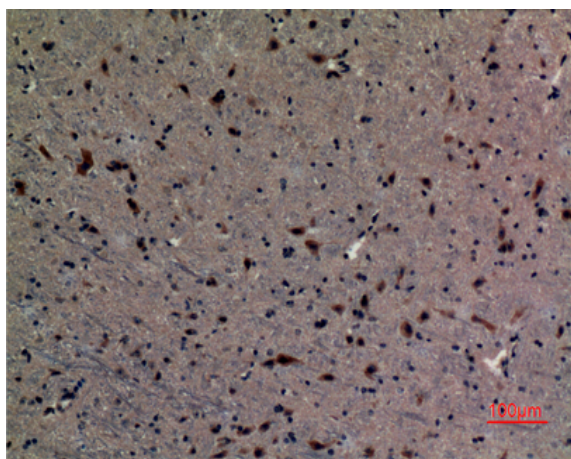
## Products Images



Western Blot analysis of extracts from Jurkat cells, using UBE2A/B Polyclonal Antibody. Secondary antibody(catalog#:RS0002) was diluted at 1:20000



Immunohistochemical analysis of paraffin-embedded rat-brain, antibody was diluted at 1:100



Immunohistochemical analysis of paraffin-embedded mouse-brain, antibody was diluted at 1:100