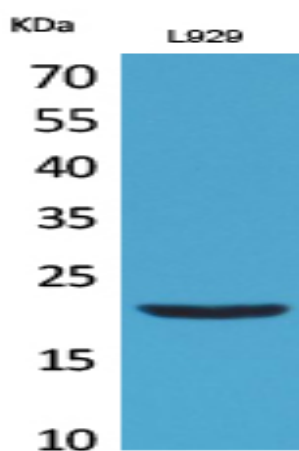


## IL-29 Polyclonal Antibody

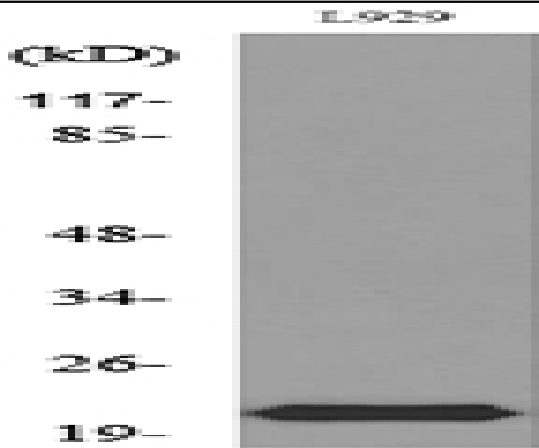
<b>Catalog No :</b>	YT5298
<b>Reactivity :</b>	Human;Rat;Mouse;
<b>Applications :</b>	WB;ELISA
<b>Target :</b>	IL-29
<b>Fields :</b>	>>Cytokine-cytokine receptor interaction;>>JAK-STAT signaling pathway
<b>Gene Name :</b>	IL29
<b>Protein Name :</b>	Interleukin-29
<b>Human Gene Id :</b>	282618
<b>Human Swiss Prot No :</b>	Q8IU54
<b>Immunogen :</b>	The antiserum was produced against synthesized peptide derived from the Internal region of human IL29. AA range:121-170
<b>Specificity :</b>	IL-29 Polyclonal Antibody detects endogenous levels of IL-29 protein.
<b>Formulation :</b>	Liquid in PBS containing 50% glycerol, 0.5% BSA and 0.02% sodium azide.
<b>Source :</b>	Polyclonal, Rabbit,IgG
<b>Dilution :</b>	WB 1:500 - 1:2000. ELISA: 1:20000. Not yet tested in other applications.
<b>Purification :</b>	The antibody was affinity-purified from rabbit antiserum by affinity-chromatography using epitope-specific immunogen.
<b>Concentration :</b>	1 mg/ml
<b>Storage Stability :</b>	-15°C to -25°C/1 year(Do not lower than -25°C)
<b>Observed Band :</b>	21kD

<b>Cell Pathway :</b>	Cytokine-cytokine receptor interaction;Jak_STAT;
<b>Background :</b>	This gene encodes a cytokine distantly related to type I interferons and the IL-10 family. This gene, interleukin 28A (IL28A), and interleukin 28B (IL28B) are three closely related cytokine genes that form a cytokine gene cluster on a chromosomal region mapped to 19q13. Expression of the cytokines encoded by the three genes can be induced by viral infection. All three cytokines have been shown to interact with a heterodimeric class II cytokine receptor that consists of interleukin 10 receptor, beta (IL10RB) and interleukin 28 receptor, alpha (IL28RA). [provided by RefSeq, Jul 2008],
<b>Function :</b>	function:Cytokine with immunomodulatory activity. May play a role in antiviral immunity. Up-regulates MHC class I antigen expression. Ligand for the heterodimeric class II cytokine receptor composed of IL10RB and IL28RA. The ligand/receptor complex seems to signal through the Jak-STAT pathway.,induction:By viral infections or double stranded RNA.,online information:Interleukin-29 entry,similarity:Belongs to the IL-28/IL-29 family.,
<b>Subcellular Location :</b>	Secreted.
<b>Sort :</b>	8490
<b>No4 :</b>	1
<b>Host :</b>	Rabbit
<b>Modifications :</b>	Unmodified

## Products Images



Western Blot analysis of L929 cells using IL-29 Polyclonal Antibody. Secondary antibody(catalog#:RS0002) was diluted at 1:20000



Western blot analysis of lysate from L929 cells, using IL29 Antibody.