

## VGF Polyclonal Antibody

<b>Catalog No :</b>	YT5296
<b>Reactivity :</b>	Human;Mouse;Rat
<b>Applications :</b>	WB;IHC;IF;ELISA
<b>Target :</b>	VGF
<b>Fields :</b>	>>Neuroactive ligand-receptor interaction
<b>Gene Name :</b>	VGF
<b>Protein Name :</b>	Neurosecretory protein VGF
<b>Human Gene Id :</b>	7425
<b>Human Swiss Prot No :</b>	O15240
<b>Rat Gene Id :</b>	29461
<b>Rat Swiss Prot No :</b>	P20156
<b>Immunogen :</b>	The antiserum was produced against synthesized peptide derived from the Internal region of human VGF. AA range:451-500
<b>Specificity :</b>	VGF Polyclonal Antibody detects endogenous levels of VGF protein.
<b>Formulation :</b>	Liquid in PBS containing 50% glycerol, 0.5% BSA and 0.02% sodium azide.
<b>Source :</b>	Polyclonal, Rabbit,IgG
<b>Dilution :</b>	WB 1:500 - 1:2000. IHC: 1:100-1:300. ELISA: 1:20000.. IF 1:50-200
<b>Purification :</b>	The antibody was affinity-purified from rabbit antiserum by affinity-chromatography using epitope-specific immunogen.
<b>Concentration :</b>	1 mg/ml

**Storage Stability :** -15°C to -25°C/1 year(Do not lower than -25°C)

**Observed Band :** 67kD

**Background :** This gene is specifically expressed in a subpopulation of neuroendocrine cells, and is upregulated by nerve growth factor. The structural organization of this gene is similar to that of the rat gene, and both the translated and the untranslated regions show a high degree of sequence similarity to the rat gene. The encoded secretory protein also shares similarities with the secretogranin/chromogranin family, however, its exact function is not known. [provided by RefSeq, Jul 2008],

**Function :** function:May be involved in the regulation of cell-cell interactions or in synatogenesis during the maturation of the nervous system.,subcellular location:Stored in secretory vesicles and then secreted.,tissue specificity:Expressed in brain.,

**Subcellular Location :** [Neurosecretory protein VGF]: Secreted . Cytoplasmic vesicle, secretory vesicle . Stored in secretory vesicles and then secreted, NERP peptides colocalize with vasopressin in the storage granules of hypothalamus.

**Expression :** Central and peripheral nervous systems, synthesized exclusively in neuronal and neuroendocrine cells.

**Tag :** hot

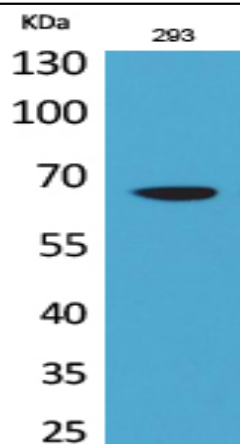
**Sort :** 24131

**No4 :** 1

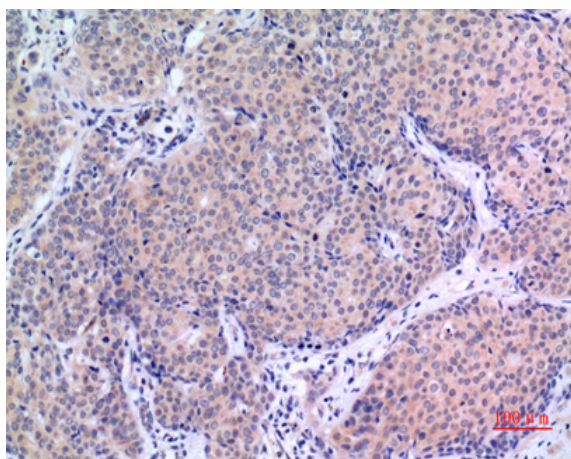
**Host :** Rabbit

**Modifications :** Unmodified

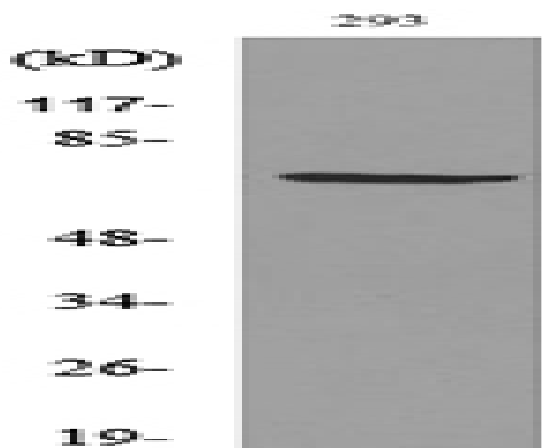
[Products Images](#)



Western Blot analysis of 293 cells using VGF Polyclonal Antibody. Secondary antibody(catalog#:RS0002) was diluted at 1:20000



Immunohistochemical analysis of paraffin-embedded human-mammary-cancer, antibody was diluted at 1:100



Western blot analysis of lysate from 293 cells, using VGF Antibody.