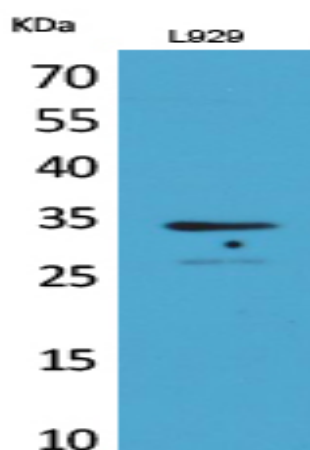


## Osteoglycin Polyclonal Antibody

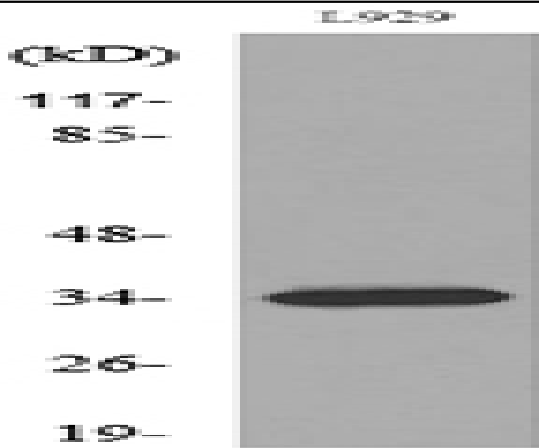
<b>Catalog No :</b>	YT5294
<b>Reactivity :</b>	Human;Mouse
<b>Applications :</b>	WB;ELISA
<b>Target :</b>	Osteoglycin
<b>Gene Name :</b>	OGN
<b>Protein Name :</b>	Mimecan
<b>Human Gene Id :</b>	4969
<b>Human Swiss Prot No :</b>	P20774
<b>Mouse Gene Id :</b>	18295
<b>Mouse Swiss Prot No :</b>	Q62000
<b>Immunogen :</b>	The antiserum was produced against synthesized peptide derived from the C-terminal region of human OGN. AA range:231-280
<b>Specificity :</b>	Osteoglycin Polyclonal Antibody detects endogenous levels of Osteoglycin protein.
<b>Formulation :</b>	Liquid in PBS containing 50% glycerol, 0.5% BSA and 0.02% sodium azide.
<b>Source :</b>	Polyclonal, Rabbit,IgG
<b>Dilution :</b>	WB 1:500 - 1:2000. ELISA: 1:20000. Not yet tested in other applications.
<b>Purification :</b>	The antibody was affinity-purified from rabbit antiserum by affinity-chromatography using epitope-specific immunogen.
<b>Concentration :</b>	1 mg/ml
<b>Storage Stability :</b>	-15°C to -25°C/1 year(Do not lower than -25°C)

**Observed Band :** 35kD**Background :** This gene encodes a member of the small leucine-rich proteoglycan (SLRP) family of proteins. The encoded protein induces ectopic bone formation in conjunction with transforming growth factor beta and may regulate osteoblast differentiation. High expression of the encoded protein may be associated with elevated heart left ventricular mass. Alternative splicing results in multiple transcript variants. [provided by RefSeq, Jan 2016],**Function :** function:Induces bone formation in conjunction with TGF-beta-1 or TGF-beta-2.,similarity:Belongs to the small leucine-rich proteoglycan (SLRP) family. Class III subfamily.,similarity:Contains 7 LRR (leucine-rich) repeats.,tissue specificity:Bone.,**Subcellular Location :** Secreted, extracellular space, extracellular matrix .**Expression :** Bone.**Sort :** 11326**No4 :** 1**Host :** Rabbit**Modifications :** Unmodified

## Products Images



Western Blot analysis of L929 cells using Osteoglycin Polyclonal Antibody. Secondary antibody(catalog#:RS0002) was diluted at 1:20000



Western blot analysis of lysate from L929 cells, using OGN Antibody.