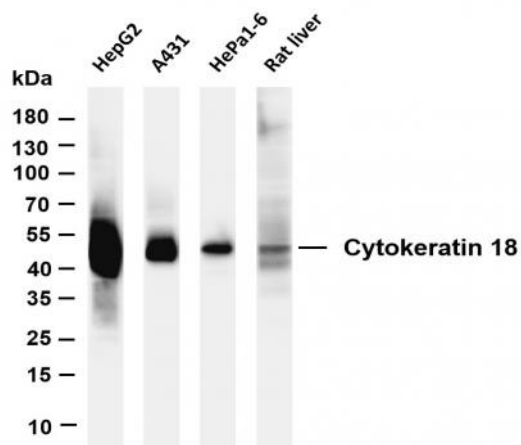


Cytokeratin 18 (PT0395R) PT® Rabbit mAb

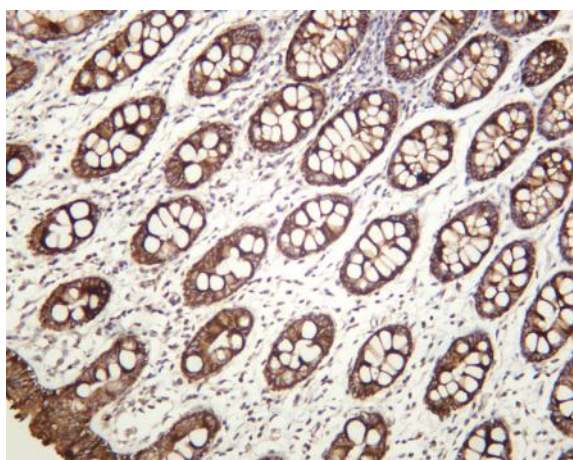
Catalog No :	YM8241
Reactivity :	Human; Mouse; Rat;
Applications :	WB;IHC;IF;IP;ELISA
Target :	Cytokeratin 18
Fields :	>>Estrogen signaling pathway;>>Staphylococcus aureus infection
Gene Name :	KRT18
Protein Name :	Keratin type I cytoskeletal 18
Human Gene Id :	3875
Human Swiss Prot No :	P05783
Mouse Gene Id :	16668
Mouse Swiss Prot No :	P05784
Rat Gene Id :	294853
Rat Swiss Prot No :	Q5BJY9
Specificity :	endogenous
Formulation :	PBS, 50% glycerol, 0.05% Proclin 300, 0.05%BSA
Source :	Monoclonal, rabbit, IgG, Kappa
Dilution :	IHC 1:2000-1:5000,WB 1:1000-1:5000,IF 1:200-1:1000,ELISA 1:5000-1:20000,IP 1:50-1:200,
Purification :	Protein A

Storage Stability :	-15°C to -25°C/1 year(Do not lower than -25°C)
Molecularweight :	48kD
Observed Band :	48kD
Cell Pathway :	Pathogenic Escherichia coli infection;
Background :	KRT18 encodes the type I intermediate filament chain keratin 18. Keratin 18, together with its filament partner keratin 8, are perhaps the most commonly found members of the intermediate filament gene family. They are expressed in single layer epithelial tissues of the body. Mutations in this gene have been linked to cryptogenic cirrhosis. Two transcript variants encoding the same protein have been found for this gene. [provided by RefSeq, Jul 2008],
Function :	disease:Defects in KRT18 are a cause of cryptogenic cirrhosis [MIM:215600].,function:Involved in the uptake of thrombin-antithrombin complexes by hepatic cells (By similarity). When phosphorylated, plays a role in filament reorganization. Involved in the delivery of mutated CFTR to the plasma membrane. Together with KRT8, is involved in interleukin-6 (IL-6)-mediated barrier protection.,induction:By IL-6.,miscellaneous:There are two types of cytoskeletal and microfibrillar keratin: I (acidic; 40-55 kDa) and II (neutral to basic; 56-70 kDa).,PTM:O-glycosylated at multiple sites; glycans consist of single N-acetylglucosamine residues.,PTM:Phosphorylation at Ser-34 increases during mitosis. Hyperphosphorylated at Ser-53 in diseased cirrhosis liver. Phosphorylation increases by IL-6.,PTM:Proteolytically cleaved by caspases during epithelial cell apoptosis. Cleavage occurs at Asp-238 by either
Subcellular Location :	Cytoplasm
Expression :	Expressed in colon, placenta, liver and very weakly in exocervix. Increased expression observed in lymph nodes of breast carcinoma.
Tag :	hot,recombinant
Sort :	4038
No4 :	1
Host :	Rabbit
Modifications :	Unmodified

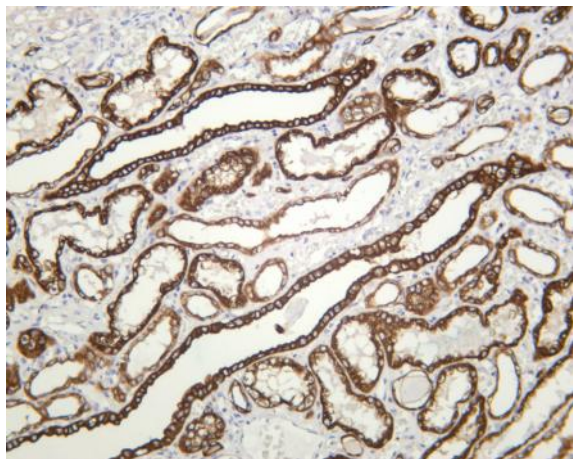
Products Images



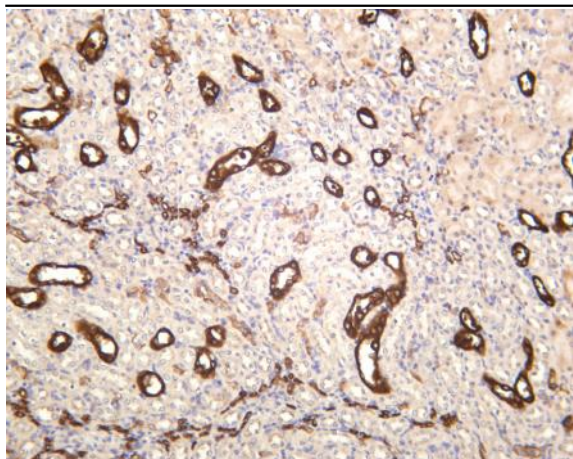
Various whole cell lysates were separated by 4-20% SDS-PAGE, and the membrane was blotted with anti-Cytokeratin 18 (PT0395R) antibody. The HRP-conjugated Goat anti-Rabbit IgG(H + L) antibody was used to detect the antibody. Lane 1: HepG2 Lane 2: A431 Lane 3: Hepa1-6 Lane 4: Rat liver
Predicted band size: 48kDa Observed band size: 48kDa



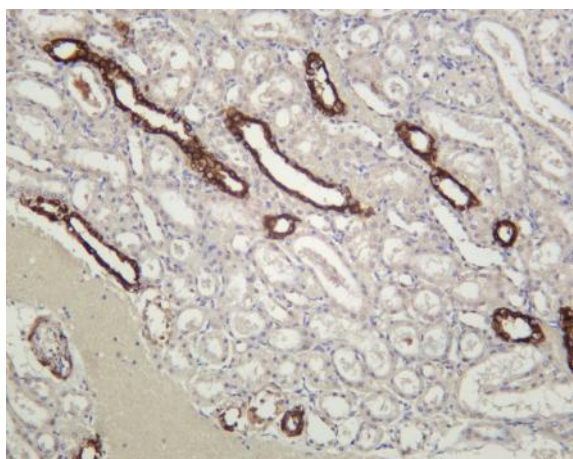
Human colon was stained with anti-Cytokeratin 18 (PT0395R) rabbit antibody



Human kidney was stained with anti-Cytokeratin 18 (PT0395R) rabbit antibody



Mouse kidney was stained with anti-Cytokeratin 18 (PT0395R) rabbit antibody



Rat kidney was stained with anti-Cytokeratin 18 (PT0395R) rabbit antibody