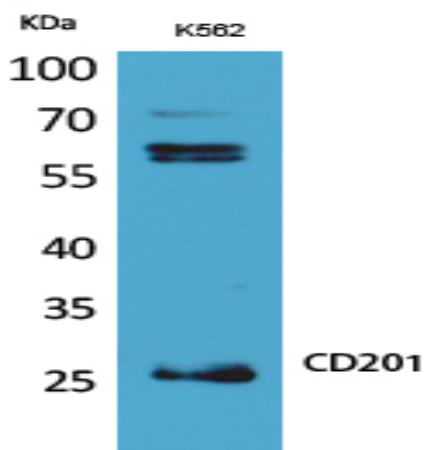


CD201 Polyclonal Antibody

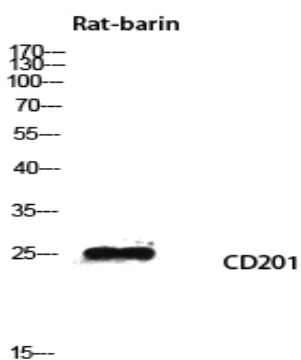
Catalog No :	YT5287
Reactivity :	Human;Mouse;Rat
Applications :	WB;IHC;IF;ELISA
Target :	CD201
Fields :	>>Complement and coagulation cascades
Gene Name :	PROCR
Protein Name :	Endothelial protein C receptor
Human Gene Id :	10544
Human Swiss Prot No :	Q9UNN8
Mouse Gene Id :	19124
Mouse Swiss Prot No :	Q64695
Rat Gene Id :	362248
Rat Swiss Prot No :	Q4V8I1
Immunogen :	Synthesized peptide derived from Endothelial protein C receptor at AA range: 141-190
Specificity :	CD201 Polyclonal Antibody detects endogenous levels of CD201 protein.
Formulation :	Liquid in PBS containing 50% glycerol, 0.5% BSA and 0.02% sodium azide.
Source :	Polyclonal, Rabbit,IgG
Dilution :	WB 1:500 - 1:2000. IHC: 1:100-300 ELISA: 1:20000.. IF 1:50-200

Purification :	The antibody was affinity-purified from rabbit antiserum by affinity-chromatography using epitope-specific immunogen.
Concentration :	1 mg/ml
Storage Stability :	-15°C to -25°C/1 year(Do not lower than -25°C)
Observed Band :	26kD
Background :	The protein encoded by this gene is a receptor for activated protein C, a serine protease activated by and involved in the blood coagulation pathway. The encoded protein is an N-glycosylated type I membrane protein that enhances the activation of protein C. Mutations in this gene have been associated with venous thromboembolism and myocardial infarction, as well as with late fetal loss during pregnancy. The encoded protein may also play a role in malarial infection and has been associated with cancer. [provided by RefSeq, Jul 2013],
Function :	function: Binds activated protein C. Enhances protein C activation by the thrombin-thrombomodulin complex; plays a role in the protein C pathway controlling blood coagulation.,PTM: A soluble form exists; probably released by a metalloprotease. Seems to have the same activity as the membrane-bound form.,PTM: N-glycosylated.,tissue specificity: Expressed strongly in the endothelial cells of arteries and veins in heart and lung, less intensely in capillaries in the lung and skin, and not at all in the endothelium of small vessels of the liver and kidney.,
Subcellular Location :	Membrane; Single-pass type I membrane protein.
Expression :	Expressed strongly in the endothelial cells of arteries and veins in heart and lung, less intensely in capillaries in the lung and skin, and not at all in the endothelium of small vessels of the liver and kidney.
Sort :	3451
No4 :	1
Host :	Rabbit
Modifications :	Unmodified

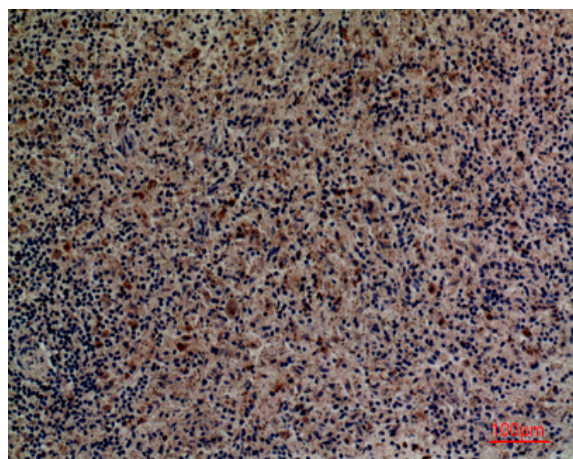
Products Images



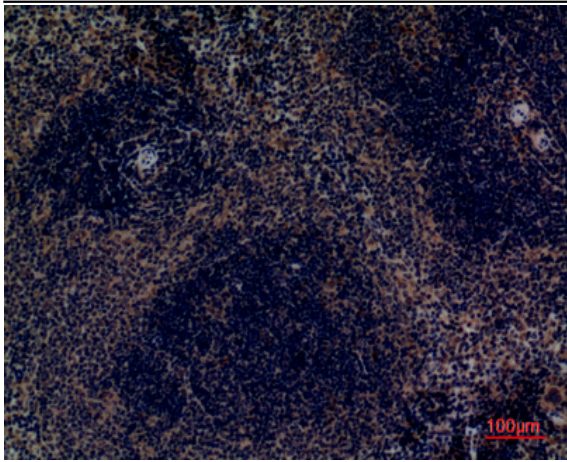
Western Blot analysis of K562 cells using CD201 Polyclonal Antibody. Antibody was diluted at 1:500. Secondary antibody(catalog#:RS0002) was diluted at 1:20000



Western blot analysis of Rat-barin lysis using CD201 antibody. Antibody was diluted at 1:500. Secondary antibody(catalog#:RS0002) was diluted at 1:20000



Immunohistochemical analysis of paraffin-embedded human-spleen, antibody was diluted at 1:100



Immunohistochemical analysis of paraffin-embedded mouse-spleen, antibody was diluted at 1:100