

CD300g Polyclonal Antibody

Catalog No :	YT5272
Reactivity :	Human;Rat;Mouse;
Applications :	WB;IHC;IF;ELISA
Target :	CD300g
Gene Name :	CD300LG
Protein Name :	CMRF35-like molecule 9
Human Gene Id :	146894
Human Swiss Prot No :	Q6UXG3
Mouse Gene Id :	52685
Mouse Swiss Prot No :	Q1ERP8
Immunogen :	The antiserum was produced against synthesized peptide derived from the Internal region of human CD300LG. AA range:41-90
Specificity :	CD300g Polyclonal Antibody detects endogenous levels of CD300g protein.
Formulation :	Liquid in PBS containing 50% glycerol, 0.5% BSA and 0.02% sodium azide.
Source :	Polyclonal, Rabbit,IgG
Dilution :	WB 1:500 - 1:2000. IHC: 1:100-300 ELISA: 1:20000.. IF 1:50-200
Purification :	The antibody was affinity-purified from rabbit antiserum by affinity-chromatography using epitope-specific immunogen.
Concentration :	1 mg/ml
Storage Stability :	-15°C to -25°C/1 year(Do not lower than -25°C)

Observed Band : 36kD

Background : Members of the CD300 (see MIM 606786)-like (CD300L) family, such as CD300LG, are widely expressed on hematopoietic cells. All CD300L proteins are type I cell surface glycoproteins that contain a single immunoglobulin (Ig) V-like domain (Takatsu et al., 2006 [PubMed 16876123]).[supplied by OMIM, Mar 2008],

Function : domain:Ig-like V-type domain mediates binding to lymphocyte.,function:Receptor which may mediate L-selectin-dependent lymphocyte rollings. Binds SELL in a calcium dependent manner. Binds lymphocyte.,PTM:O-glycosylated with sialylated oligosaccharides.,similarity:Belongs to the CD300 family.,similarity:Contains 1 Ig-like V-type (immunoglobulin-like) domain.,tissue specificity:Highly expressed in heart, skeletal muscle and placenta.,

Subcellular Location : Apical cell membrane ; Single-pass type I membrane protein . Basolateral cell membrane ; Single-pass type I membrane protein . Endosome, multivesicular body membrane ; Single-pass type I membrane protein . Transcytoses across the cytoplasm. .

Expression : Highly expressed in heart, skeletal muscle and placenta.

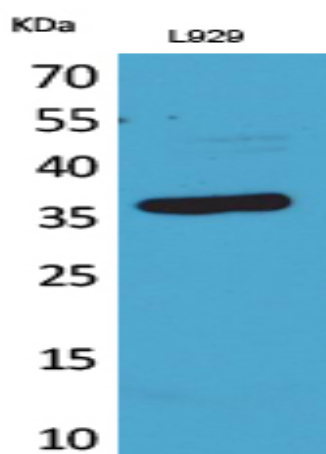
Sort : 3522

No4 : 1

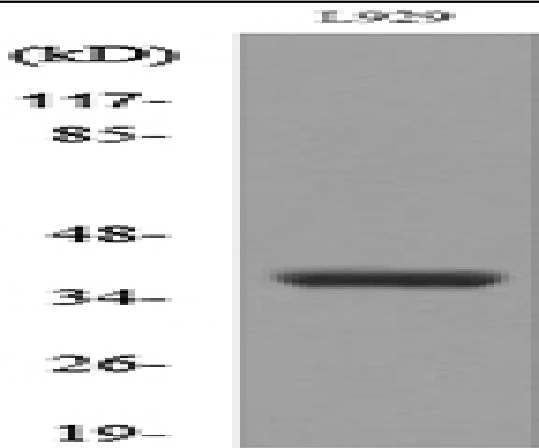
Host : Rabbit

Modifications : Unmodified

Products Images



Western Blot analysis of L929 cells using CD300g Polyclonal Antibody. Secondary antibody(catalog#:RS0002) was diluted at 1:20000



Western blot analysis of lysate from L929 cells, using CD300LG Antibody.