

## CD248 Polyclonal Antibody

<b>Catalog No :</b>	YT5267
<b>Reactivity :</b>	Human;Rat;Mouse;
<b>Applications :</b>	WB;ELISA
<b>Target :</b>	CD248
<b>Gene Name :</b>	CD248
<b>Protein Name :</b>	Endosialin
<b>Human Gene Id :</b>	57124
<b>Human Swiss Prot No :</b>	Q9HCU0
<b>Mouse Swiss Prot No :</b>	Q91V98
<b>Immunogen :</b>	The antiserum was produced against synthesized peptide derived from the Internal region of human CD248. AA range:341-390
<b>Specificity :</b>	CD248 Polyclonal Antibody detects endogenous levels of CD248 protein.
<b>Formulation :</b>	Liquid in PBS containing 50% glycerol, 0.5% BSA and 0.02% sodium azide.
<b>Source :</b>	Polyclonal, Rabbit,IgG
<b>Dilution :</b>	WB 1:500 - 1:2000. ELISA: 1:20000. Not yet tested in other applications.
<b>Purification :</b>	The antibody was affinity-purified from rabbit antiserum by affinity-chromatography using epitope-specific immunogen.
<b>Concentration :</b>	1 mg/ml
<b>Storage Stability :</b>	-15°C to -25°C/1 year(Do not lower than -25°C)
<b>Observed Band :</b>	80kD

**Background :** function:May play a role in tumor angiogenesis.,online information:Endosialin,PTM:May be N-glycosylated.,PTM:O-glycosylated with sialylated oligosaccharides.,similarity:Contains 1 C-type lectin domain.,similarity:Contains 1 EGF-like domain.,similarity:Contains 1 Sushi (CCP/SCR) domain.,tissue specificity:Expressed in tumor endothelial cells but absent or barely detectable in normal endothelial cells. Expressed in metastatic lesions of the liver and during angiogenesis of corpus luteum formation and wound healing. Expressed in vascular endothelial cells of malignant tumors but not in normal blood vessels. Expressed in stromal fibroblasts.,

---

**Function :** function:May play a role in tumor angiogenesis.,online information:Endosialin,PTM:May be N-glycosylated.,PTM:O-glycosylated with sialylated oligosaccharides.,similarity:Contains 1 C-type lectin domain.,similarity:Contains 1 EGF-like domain.,similarity:Contains 1 Sushi (CCP/SCR) domain.,tissue specificity:Expressed in tumor endothelial cells but absent or barely detectable in normal endothelial cells. Expressed in metastatic lesions of the liver and during angiogenesis of corpus luteum formation and wound healing. Expressed in vascular endothelial cells of malignant tumors but not in normal blood vessels. Expressed in stromal fibroblasts.,

---

**Subcellular Location :** Membrane ; Single-pass type I membrane protein .

---

**Expression :** Expressed in tumor endothelial cells but absent or barely detectable in normal endothelial cells. Expressed in metastatic lesions of the liver and during angiogenesis of corpus luteum formation and wound healing. Expressed in vascular endothelial cells of malignant tumors but not in normal blood vessels. Expressed in stromal fibroblasts.

---

**Sort :** 3495

---

**No4 :** 1

---

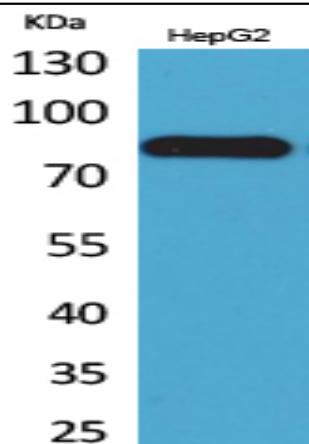
**Host :** Rabbit

---

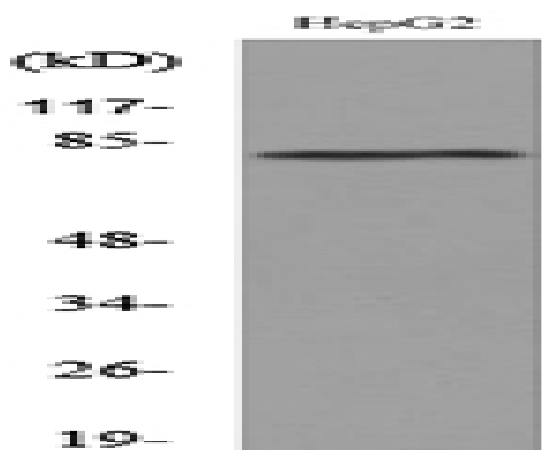
**Modifications :** Unmodified

---

**Products Images**



Western Blot analysis of HepG2 cells using CD248 Polyclonal Antibody. Secondary antibody(catalog#:RS0002) was diluted at 1:20000



Western blot analysis of lysate from HepG2 cells, using CD248 Antibody.