

## M6A Polyclonal Antibody

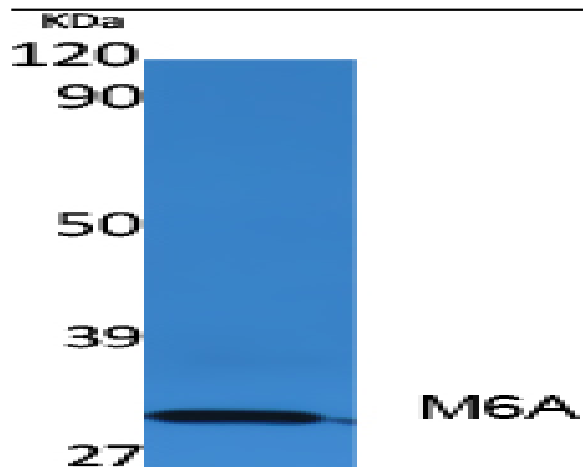
<b>Catalog No :</b>	YT5044
<b>Reactivity :</b>	Human;Mouse;Rat
<b>Applications :</b>	WB;ELISA
<b>Target :</b>	M6A
<b>Gene Name :</b>	GPM6A
<b>Protein Name :</b>	Neuronal membrane glycoprotein M6-a
<b>Human Gene Id :</b>	2823
<b>Human Swiss Prot No :</b>	P51674
<b>Mouse Gene Id :</b>	234267
<b>Mouse Swiss Prot No :</b>	P35802
<b>Rat Gene Id :</b>	306439
<b>Rat Swiss Prot No :</b>	Q812E9
<b>Immunogen :</b>	Synthesized peptide derived from M6A . at AA range: 140-220
<b>Specificity :</b>	M6A Polyclonal Antibody detects endogenous levels of M6A protein.
<b>Formulation :</b>	Liquid in PBS containing 50% glycerol, 0.5% BSA and 0.02% sodium azide.
<b>Source :</b>	Polyclonal, Rabbit,IgG
<b>Dilution :</b>	WB 1:500 - 1:2000. ELISA: 1:5000. Not yet tested in other applications.
<b>Purification :</b>	The antibody was affinity-purified from rabbit antiserum by affinity-chromatography using epitope-specific immunogen.

---

<b>Concentration :</b>	1 mg/ml
<b>Storage Stability :</b>	-15°C to -25°C/1 year(Do not lower than -25°C)
<b>Observed Band :</b>	31kD
<b>Background :</b>	similarity:Belongs to the myelin proteolipid protein family.,
<b>Function :</b>	similarity:Belongs to the myelin proteolipid protein family.,
<b>Subcellular Location :</b>	Cell membrane ; Multi-pass membrane protein . Cell projection, axon . Cell projection, growth cone . Cell projection, dendritic spine . Cell projection, filopodium . Cell projection, neuron projection . Localizes to cholesterol-rich lipid rafts of the plasma membrane of hippocampal neurons. Localized to plasma membrane of cell bodies and neurites of hippocampal neurons. Localized in membrane protrusions (filopodia and spines) of primary hippocampal neurons (By similarity). Localized to the growth cone edge membrane of elongating axons (By similarity). .
<b>Expression :</b>	Brain,Brain cortex,Fetal brain,Spinal cord,
<b>Sort :</b>	9317
<b>No1 :</b>	ab151230
<b>No2 :</b>	ab151230
<b>No4 :</b>	1
<b>Host :</b>	Rabbit
<b>Modifications :</b>	Unmodified

---

## Products Images



Western Blot analysis of extracts from rat stomach, using M6A Polyclonal Antibody. Secondary antibody(catalog#:RS0002) was diluted at 1:20000