

Aladin Polyclonal Antibody

Catalog No :	YT5042
Reactivity :	Human;Rat
Applications :	WB;ELISA
Target :	Aladin
Fields :	>>Nucleocytoplasmic transport
Gene Name :	AAAS
Protein Name :	Aladin
Human Gene Id :	8086
Human Swiss Prot No :	Q9NRG9
Mouse Swiss Prot No :	P58742
Immunogen :	Synthesized peptide derived from Aladin . at AA range: 360-440
Specificity :	Aladin Polyclonal Antibody detects endogenous levels of Aladin protein.
Formulation :	Liquid in PBS containing 50% glycerol, 0.5% BSA and 0.02% sodium azide.
Source :	Polyclonal, Rabbit,IgG
Dilution :	WB 1:500 - 1:2000. ELISA: 1:40000. Not yet tested in other applications.
Purification :	The antibody was affinity-purified from rabbit antiserum by affinity-chromatography using epitope-specific immunogen.
Concentration :	1 mg/ml
Storage Stability :	-15°C to -25°C/1 year(Do not lower than -25°C)

Observed Band : 59kD

Background : The protein encoded by this gene is a member of the WD-repeat family of regulatory proteins and may be involved in normal development of the peripheral and central nervous system. The encoded protein is part of the nuclear pore complex and is anchored there by NDC1. Defects in this gene are a cause of achalasia-addisonianism-alacrima syndrome (AAAS), also called triple-A syndrome or Allgrove syndrome. Two transcript variants encoding different isoforms have been found for this gene. [provided by RefSeq, Mar 2010],

Function : disease:Defects in AAAS are the cause of achalasia-addisonianism-alacrima syndrome (AAAS) [MIM:231550]; also known as triple-A syndrome or Allgrove syndrome. AAAS is an autosomal recessive disorder characterized by adrenocorticotrophic hormone (ACTH)-resistant adrenal failure, achalasia of the esophageal cardia and alacrima. The syndrome is associated with variable and progressive neurological impairment involving the central, peripheral, and autonomic nervous system. Other features such as palmoplantar hyperkeratosis, short stature, facial dysmorphism and osteoporosis may also be present.,function:Plays a role in the normal development of the peripheral and central nervous system.,similarity:Contains 4 WD repeats.,tissue specificity:Widely expressed. Particularly abundant expression is found in cerebellum, corpus callosum, adrenal gland, pituitary gland, gastrointestinal structures and feta

Subcellular Location : Nucleus, nuclear pore complex . Cytoplasm, cytoskeleton, spindle pole . Nucleus envelope . In metaphase cells localizes within the spindle with some accumulation around spindle poles, with the highest concentration between the centrosome and metaphase plate (PubMed:26246606). The localization to the spindle is microtubule-mediated (PubMed:26246606).

Expression : Widely expressed (PubMed:11159947, PubMed:16022285). Particularly abundant in cerebellum, corpus callosum, adrenal gland, pituitary gland, gastrointestinal structures and fetal lung (PubMed:11159947).

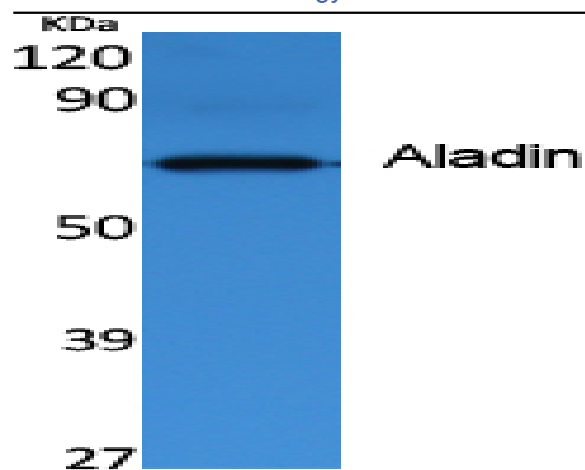
Sort : 1878

No4 : 1

Host : Rabbit

Modifications : Unmodified

Products Images



Western Blot analysis of extracts from rat kidney, using Aladin Polyclonal Antibody. Secondary antibody(catalog#:RS0002) was diluted at 1:20000 cells nucleus extracted by Minute TM Cytoplasmic and Nuclear Fractionation kit (SC-003, Inventbiotech, MN, USA).