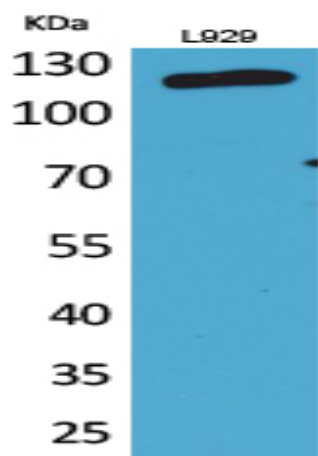


CD107a Polyclonal Antibody

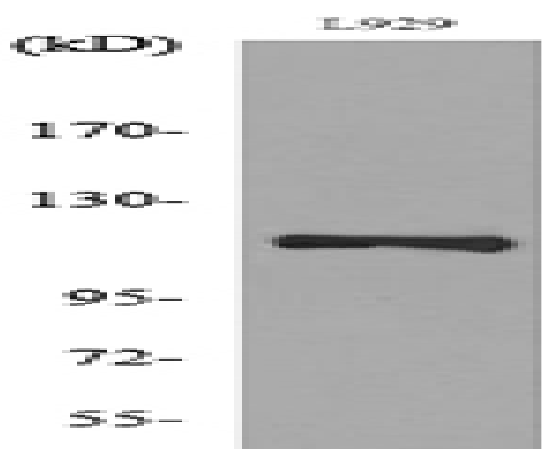
Catalog No :	YT5260
Reactivity :	Human;Rat;Mouse;
Applications :	WB;ELISA
Target :	CD107a
Fields :	>>Autophagy - animal;>>Lysosome;>>Phagosome;>>Tuberculosis
Gene Name :	LAMP1
Protein Name :	Lysosome-associated membrane glycoprotein 1
Human Gene Id :	3916
Human Swiss Prot No :	P11279
Mouse Swiss Prot No :	P11438
Rat Gene Id :	25328
Rat Swiss Prot No :	P14562
Immunogen :	The antiserum was produced against synthesized peptide derived from the Internal region of human LAMP1. AA range:211-260
Specificity :	CD107a Polyclonal Antibody detects endogenous levels of CD107a protein.
Formulation :	Liquid in PBS containing 50% glycerol, 0.5% BSA and 0.02% sodium azide.
Source :	Polyclonal, Rabbit,IgG
Dilution :	WB 1:500 - 1:2000. ELISA: 1:20000. Not yet tested in other applications.
Purification :	The antibody was affinity-purified from rabbit antiserum by affinity-chromatography using epitope-specific immunogen.

Concentration :	1 mg/ml
Storage Stability :	-15°C to -25°C/1 year(Do not lower than -25°C)
Observed Band :	120kD
Cell Pathway :	Lysosome;
Background :	The protein encoded by this gene is a member of a family of membrane glycoproteins. This glycoprotein provides selectins with carbohydrate ligands. It may also play a role in tumor cell metastasis. [provided by RefSeq, Jul 2008],
Function :	function:Presents carbohydrate ligands to selectins. Also implicated in tumor cell metastasis.,PTM:O- and N-glycosylated; some of the 18 N-linked glycans are polylactosaminoglycans.,similarity:Belongs to the LAMP family.,subcellular location:This protein shuttles between lysosomes, endosomes, and the plasma membrane.,
Subcellular Location :	Cell membrane ; Single-pass type I membrane protein . Endosome membrane; Single-pass type I membrane protein . Lysosome membrane ; Single-pass type I membrane protein . Late endosome membrane ; Single-pass type I membrane protein . Cytolytic granule membrane ; Single-pass type I membrane protein . This protein shuttles between lysosomes, endosomes, and the plasma membrane (By similarity). Colocalizes with OSBPL1A at the late endosome (PubMed:16176980). .
Expression :	Brain,Liver,Pancreas,Placenta,Plasma,Testis,
Tag :	orthogonal
Sort :	1
No1 :	9091S
No2 :	9091S
No4 :	1
Host :	Rabbit
Modifications :	Unmodified

Products Images



Western Blot analysis of L929 cells using CD107a Polyclonal Antibody. Secondary antibody(catalog#:RS0002) was diluted at 1:20000



Western blot analysis of lysate from L929 cells, using LAMP1 Antibody.