

## CD48 Polyclonal Antibody

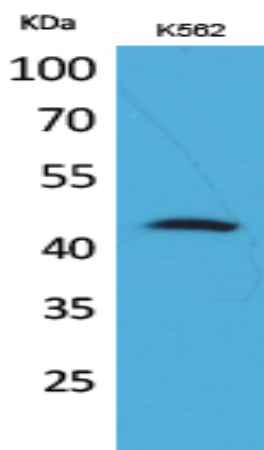
<b>Catalog No :</b>	YT5247
<b>Reactivity :</b>	Human;Rat;Mouse;
<b>Applications :</b>	WB;IHC;IF;ELISA
<b>Target :</b>	CD48
<b>Fields :</b>	>>Natural killer cell mediated cytotoxicity
<b>Gene Name :</b>	CD48
<b>Protein Name :</b>	CD48 antigen
<b>Human Gene Id :</b>	962
<b>Human Swiss Prot No :</b>	P09326
<b>Mouse Swiss Prot No :</b>	P18181
<b>Immunogen :</b>	The antiserum was produced against synthesized peptide derived from the Internal region of human CD48. AA range:41-90
<b>Specificity :</b>	CD48 Polyclonal Antibody detects endogenous levels of CD48 protein.
<b>Formulation :</b>	Liquid in PBS containing 50% glycerol, 0.5% BSA and 0.02% sodium azide.
<b>Source :</b>	Polyclonal, Rabbit,IgG
<b>Dilution :</b>	WB 1:500 - 1:2000. IHC: 1:100-300 ELISA: 1:20000.. IF 1:50-200
<b>Purification :</b>	The antibody was affinity-purified from rabbit antiserum by affinity-chromatography using epitope-specific immunogen.
<b>Concentration :</b>	1 mg/ml
<b>Storage Stability :</b>	-15°C to -25°C/1 year(Do not lower than -25°C)

---

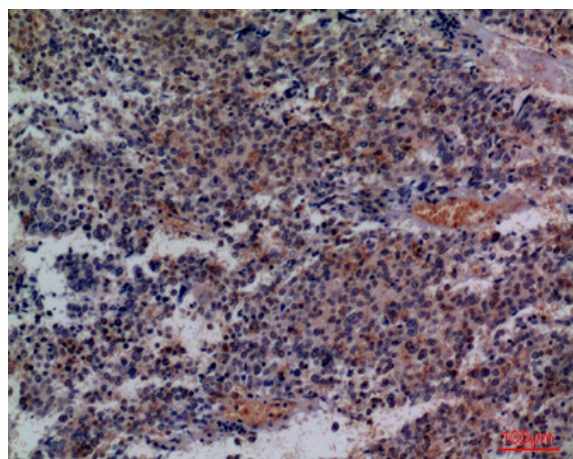
<b>Observed Band :</b>	40kD
<b>Cell Pathway :</b>	Natural killer cell mediated cytotoxicity;
<b>Background :</b>	<p>This gene encodes a member of the CD2 subfamily of immunoglobulin-like receptors which includes SLAM (signaling lymphocyte activation molecules) proteins. The encoded protein is found on the surface of lymphocytes and other immune cells, dendritic cells and endothelial cells, and participates in activation and differentiation pathways in these cells. The encoded protein does not have a transmembrane domain, however, but is held at the cell surface by a GPI anchor via a C-terminal domain which maybe cleaved to yield a soluble form of the receptor. Multiple transcript variants encoding different isoforms have been found for this gene. [provided by RefSeq, Dec 2011],</p>
<b>Function :</b>	<p>function:Ligand for CD2. Might facilitate interaction between activated lymphocytes. Probably involved in regulating T-cell activation.,similarity:Contains 1 Ig-like C2-type (immunoglobulin-like) domain.,similarity:Contains 1 Ig-like V-type (immunoglobulin-like) domain.,</p>
<b>Subcellular Location :</b>	Cell membrane ; Lipid-anchor, GPI-anchor . Secreted .
<b>Expression :</b>	Widely expressed on all hematopoietic cells.
<b>Tag :</b>	hot
<b>Sort :</b>	3602
<b>No4 :</b>	1
<b>Host :</b>	Rabbit
<b>Modifications :</b>	Unmodified

---

## Products Images



Western Blot analysis of K562 cells using CD48 Polyclonal Antibody. Secondary antibody(catalog#:RS0002) was diluted at 1:20000



Immunohistochemical analysis of paraffin-embedded human-lung-cancer, antibody was diluted at 1:100