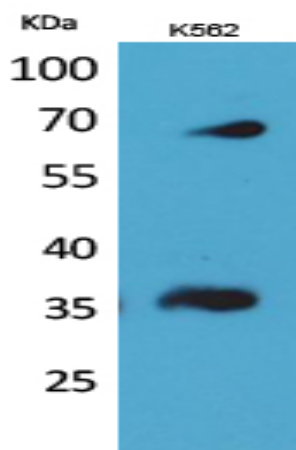


CD32-B/C Polyclonal Antibody

Catalog No :	YT5246
Reactivity :	Human;Rat;Mouse;
Applications :	WB;ELISA
Target :	CD32
Fields :	>>Phagosome;>>Osteoclast differentiation;>>B cell receptor signaling pathway;>>Fc gamma R-mediated phagocytosis;>>Staphylococcus aureus infection;>>Tuberculosis;>>Measles
Gene Name :	FCGR2B/FCGR2C
Protein Name :	Low affinity immunoglobulin gamma Fc region receptor II-b/Low affinity immunoglobulin gamma Fc region receptor II-c
Human Gene Id :	2213
Human Swiss Prot No :	P31994
Immunogen :	The antiserum was produced against synthesized peptide derived from the Internal region of human FCGR2B/C. AA range:141-190
Specificity :	CD32-B/C Polyclonal Antibody detects endogenous levels of CD32-B/C protein.
Formulation :	Liquid in PBS containing 50% glycerol, 0.5% BSA and 0.02% sodium azide.
Source :	Polyclonal, Rabbit,IgG
Dilution :	WB 1:500 - 1:2000. ELISA: 1:20000. Not yet tested in other applications.
Purification :	The antibody was affinity-purified from rabbit antiserum by affinity-chromatography using epitope-specific immunogen.
Concentration :	1 mg/ml
Storage Stability :	-15°C to -25°C/1 year(Do not lower than -25°C)

Observed Band :	35kD
Cell Pathway :	B_Cell_Antigen;Fc gamma R-mediated phagocytosis;Systemic lupus erythematosus;
Background :	Low affinity immunoglobulin gamma Fc region receptor II-b/Low affinity immunoglobulin gamma Fc region receptor II-c encoded by FCGR2B is a low affinity receptor for the Fc region of immunoglobulin gamma complexes. The encoded protein is involved in the phagocytosis of immune complexes and in the regulation of antibody production by B-cells. Variations in this gene may increase susceptibility to systemic lupus erythematosus (SLE). Several transcript variants encoding different isoforms have been found for this gene.
Function :	immune response,
Subcellular Location :	Cell membrane; Single-pass type I membrane protein.
Expression :	Is the most broadly distributed Fc-gamma-receptor. Expressed in monocyte, neutrophils, macrophages, basophils, eosinophils, Langerhans cells, B-cells, platelets cells and placenta (endothelial cells). Not detected in natural killer cells.
Sort :	3550
No4 :	1
Host :	Rabbit
Modifications :	Unmodified

Products Images



Western Blot analysis of K562 cells using CD32-B/C Polyclonal Antibody. Secondary antibody(catalog#:RS0002) was diluted at 1:20000