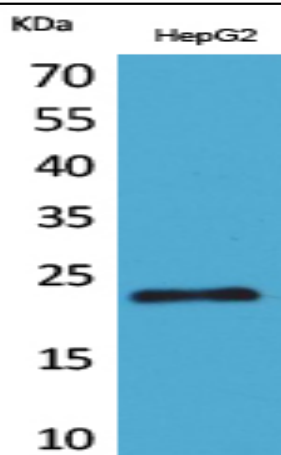


SNAP 23 Polyclonal Antibody

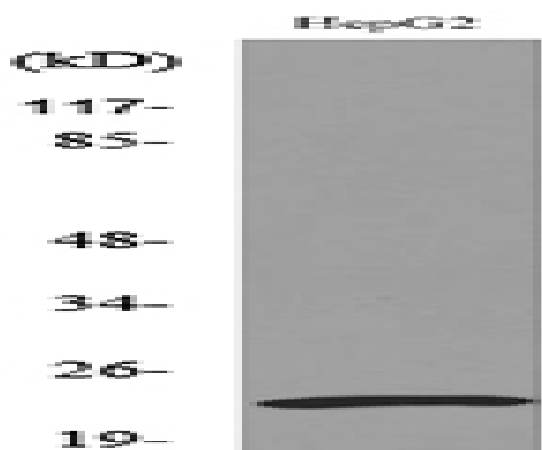
Catalog No :	YT5231
Reactivity :	Human;Rat;Mouse;
Applications :	WB;IHC;IF;ELISA
Target :	SNAP 23
Fields :	>>SNARE interactions in vesicular transport;>>Platelet activation
Gene Name :	SNAP-23
Protein Name :	Synaptosomal-associated protein 23
Human Gene Id :	8773
Human Swiss Prot No :	O00161
Mouse Swiss Prot No :	O09044
Immunogen :	The antiserum was produced against synthesized peptide derived from the C-terminal region of human SNAP23. AA range:151-200
Specificity :	SNAP 23 Polyclonal Antibody detects endogenous levels of SNAP 23 protein.
Formulation :	Liquid in PBS containing 50% glycerol, 0.5% BSA and 0.02% sodium azide.
Source :	Polyclonal, Rabbit,IgG
Dilution :	WB 1:500 - 1:2000. IHC: 1:100-300 ELISA: 1:20000.. IF 1:50-200
Purification :	The antibody was affinity-purified from rabbit antiserum by affinity-chromatography using epitope-specific immunogen.
Concentration :	1 mg/ml
Storage Stability :	-15°C to -25°C/1 year(Do not lower than -25°C)

Observed Band :	25kD
Cell Pathway :	SNARE interactions in vesicular transport;
Background :	<p>Specificity of vesicular transport is regulated, in part, by the interaction of a vesicle-associated membrane protein termed synaptobrevin/VAMP with a target compartment membrane protein termed syntaxin. These proteins, together with SNAP25 (synaptosome-associated protein of 25 kDa), form a complex which serves as a binding site for the general membrane fusion machinery. Synaptobrevin/VAMP and syntaxin are believed to be involved in vesicular transport in most, if not all cells, while SNAP25 is present almost exclusively in the brain, suggesting that a ubiquitously expressed homolog of SNAP25 exists to facilitate transport vesicle/target membrane fusion in other tissues. The protein encoded by this gene is structurally and functionally similar to SNAP25 and binds tightly to multiple syntaxins and synaptobrevins/VAMPs. It is an essential component of the high affinity receptor for the</p>
Function :	<p>function:Essential component of the high affinity receptor for the general membrane fusion machinery and an important regulator of transport vesicle docking and fusion.,similarity:Belongs to the SNAP-25 family.,similarity:Contains 2 t-SNARE coiled-coil homology domains.,subcellular location:Mainly localized to the plasma membrane.,subunit:Binds simultaneously to SNAP25BP and SYN4. Found in a complex with VAMP8 and STX4 in pancreas (By similarity). Binds tightly to multiple syntaxins and synaptobrevins/VAMPs. Found in a complex with VAMP8 and STX1A.,tissue specificity:Ubiquitous. Highest levels where found in placenta.,</p>
Subcellular Location :	Cell membrane; Peripheral membrane protein. Cell membrane; Lipid-anchor. Cell junction, synapse, synaptosome. Mainly localized to the plasma membrane.
Expression :	Ubiquitous. Highest levels where found in placenta.
Sort :	16465
No4 :	1
Host :	Rabbit
Modifications :	Unmodified

Products Images



Western Blot analysis of HepG2 cells using SNAP 23 Polyclonal Antibody. Secondary antibody(catalog#:RS0002) was diluted at 1:20000



Western blot analysis of lysate from HepG2 cells, using SNAP23 Antibody.