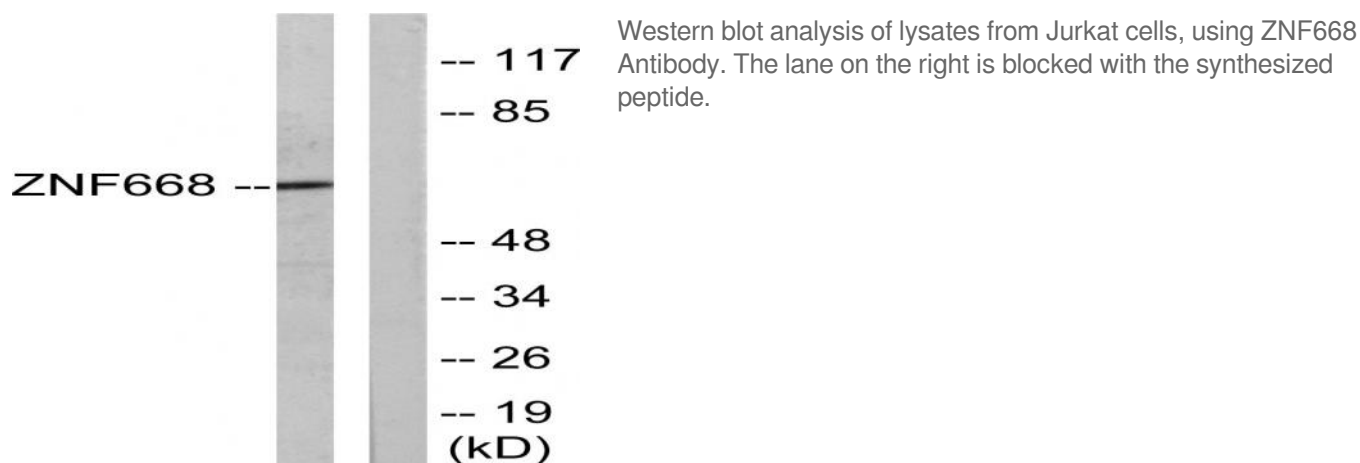


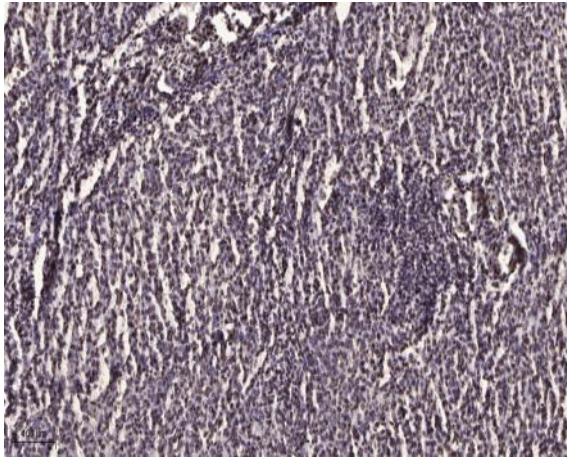
## ZNF668 Polyclonal Antibody

<b>Catalog No :</b>	YT4977
<b>Reactivity :</b>	Human;Mouse
<b>Applications :</b>	WB;IHC;IF;ELISA
<b>Target :</b>	ZNF668
<b>Gene Name :</b>	ZNF668
<b>Protein Name :</b>	Zinc finger protein 668
<b>Human Gene Id :</b>	79759
<b>Human Swiss Prot No :</b>	Q96K58
<b>Mouse Gene Id :</b>	244219
<b>Mouse Swiss Prot No :</b>	Q8K2R5
<b>Immunogen :</b>	The antiserum was produced against synthesized peptide derived from human ZNF668. AA range:271-320
<b>Specificity :</b>	ZNF668 Polyclonal Antibody detects endogenous levels of ZNF668 protein.
<b>Formulation :</b>	Liquid in PBS containing 50% glycerol, 0.5% BSA and 0.02% sodium azide.
<b>Source :</b>	Polyclonal, Rabbit,IgG
<b>Dilution :</b>	WB 1:500 - 1:2000. IHC 1:100 - 1:300. IF 1:200 - 1:1000. ELISA: 1:10000. Not yet tested in other applications.
<b>Purification :</b>	The antibody was affinity-purified from rabbit antiserum by affinity-chromatography using epitope-specific immunogen.
<b>Concentration :</b>	1 mg/ml
<b>Storage Stability :</b>	-15°C to -25°C/1 year(Do not lower than -25°C)

<b>Observed Band :</b>	68kD
<b>Background :</b>	function:May be involved in transcriptional regulation.,similarity:Belongs to the krueppel C2H2-type zinc-finger protein family.,similarity:Contains 16 C2H2-type zinc fingers.,
<b>Function :</b>	function:May be involved in transcriptional regulation.,similarity:Belongs to the krueppel C2H2-type zinc-finger protein family.,similarity:Contains 16 C2H2-type zinc fingers.,
<b>Subcellular Location :</b>	Nucleus .
<b>Expression :</b>	Brain,Mammary gland,Placenta,Skin,
<b>Sort :</b>	24745
<b>No4 :</b>	1
<b>Host :</b>	Rabbit
<b>Modifications :</b>	Unmodified

## Products Images





Immunohistochemical analysis of paraffin-embedded human brain tumor. 1, Antibody was diluted at 1:200(4° overnight). 2, Tris-EDTA,pH9.0 was used for antigen retrieval. 3,Secondary antibody was diluted at 1:200(room temperature, 45min).