

SP-A Polyclonal Antibody

Catalog No :	YT5191
Reactivity :	Human;Mouse;Rat
Applications :	WB;IHC;IF;ELISA
Target :	SP-A
Fields :	>>Phagosome;>>Pertussis
Gene Name :	SFTPA2/SFTPA1
Protein Name :	Pulmonary surfactant-associated protein A2/Pulmonary surfactant-associated protein A1
Human Gene Id :	729238
Human Swiss Prot No :	Q8IWL1
Rat Gene Id :	24773
Rat Swiss Prot No :	P08427
Immunogen :	The antiserum was produced against synthesized peptide derived from the Internal region of human SFTPA1/2. AA range:141-190
Specificity :	SP-A Polyclonal Antibody detects endogenous levels of SP-A protein.
Formulation :	Liquid in PBS containing 50% glycerol, 0.5% BSA and 0.02% sodium azide.
Source :	Polyclonal, Rabbit,IgG
Dilution :	WB 1:500 - 1:2000. IHC: 1:100-300 ELISA: 1:20000.. IF 1:50-200
Purification :	The antibody was affinity-purified from rabbit antiserum by affinity-chromatography using epitope-specific immunogen.
Concentration :	1 mg/ml

Storage Stability : -15°C to -25°C/1 year(Do not lower than -25°C)

Observed Band : 34kD

Background : This gene is one of several genes encoding pulmonary-surfactant associated proteins (SFTPA) located on chromosome 10. Mutations in this gene and a highly similar gene located nearby, which affect the highly conserved carbohydrate recognition domain, are associated with idiopathic pulmonary fibrosis. The current version of the assembly displays only a single centromeric SFTPA gene pair rather than the two gene pairs shown in the previous assembly which were thought to have resulted from a duplication. [provided by RefSeq, Sep 2009],

Function : function:In presence of calcium ions, it binds to surfactant phospholipids and contributes to lower the surface tension at the air-liquid interface in the alveoli of the mammalian lung and is essential for normal respiration.,miscellaneous:Pulmonary surfactant consists of 90% lipid and 10% protein. There are 4 surfactant-associated proteins: 2 collagenous, carbohydrate-binding glycoproteins (SP-A and SP-D) and 2 small hydrophobic proteins (SP-B and SP-C).,polymorphism:At least 6 alleles of SFTPA2 are known: 1A, 1A(0), 1A(1), 1A(2), 1A(3) and 1A(4). The sequence shown is that of allele 1A(0).,similarity:Belongs to the SFTPA family.,similarity:Contains 1 C-type lectin domain.,similarity:Contains 1 collagen-like domain.,subunit:Oligomeric complex of 6 set of homotrimers.,

Subcellular Location : Secreted . Secreted, extracellular space, extracellular matrix. Secreted, extracellular space, surface film.

Tag : hot

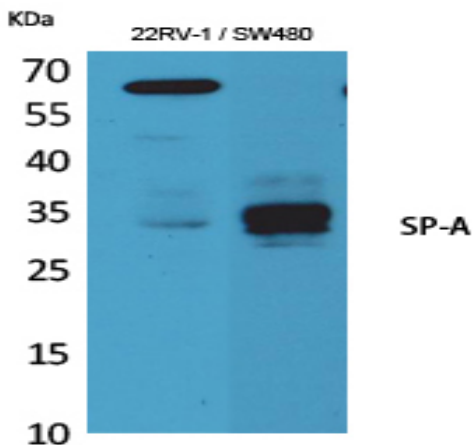
Sort : 16534

No4 : 1

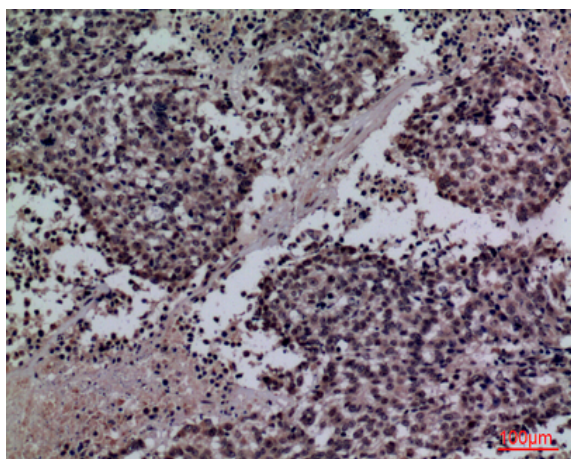
Host : Rabbit

Modifications : Unmodified

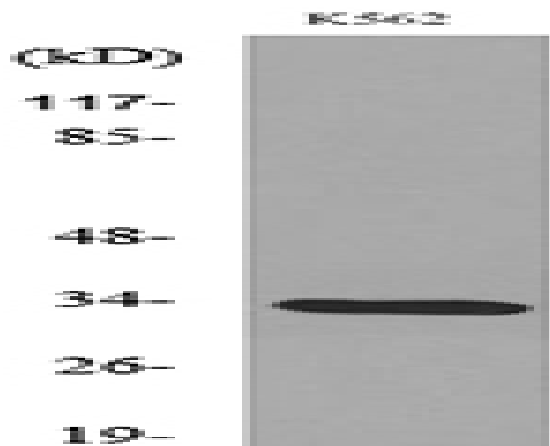
Products Images



Western Blot analysis of 22RV-1 and SW480 cell lysis, mouse lung cells using SP-A Polyclonal Antibody. Secondary antibody(catalog#:RS0002) was diluted at 1:20000



Immunohistochemical analysis of paraffin-embedded human-lung-cancer, antibody was diluted at 1:100



Western blot analysis of lysate from K562 cells, using SFTPA1/2 Antibody.