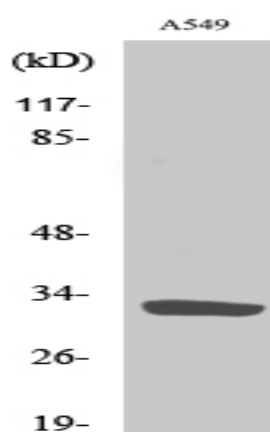


ZIP9 Polyclonal Antibody

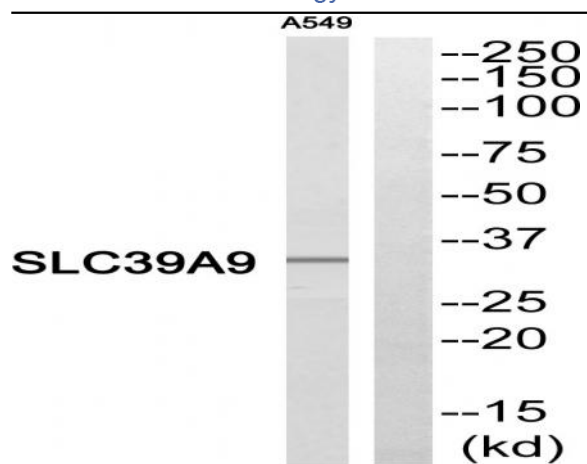
Catalog No :	YT4951
Reactivity :	Human;Rat
Applications :	WB;ELISA
Target :	ZIP9
Fields :	>>Alzheimer disease;>>Parkinson disease
Gene Name :	SLC39A9
Protein Name :	Zinc transporter ZIP9
Human Gene Id :	55334
Human Swiss Prot No :	Q9NUM3
Mouse Swiss Prot No :	Q8BFU1
Rat Gene Id :	314275
Rat Swiss Prot No :	Q3KR82
Immunogen :	The antiserum was produced against synthesized peptide derived from human SLC39A9. AA range:101-150
Specificity :	ZIP9 Polyclonal Antibody detects endogenous levels of ZIP9 protein.
Formulation :	Liquid in PBS containing 50% glycerol, 0.5% BSA and 0.02% sodium azide.
Source :	Polyclonal, Rabbit,IgG
Dilution :	WB 1:500 - 1:2000. ELISA: 1:10000. Not yet tested in other applications.
Purification :	The antibody was affinity-purified from rabbit antiserum by affinity-chromatography using epitope-specific immunogen.

Concentration :	1 mg/ml
Storage Stability :	-15°C to -25°C/1 year(Do not lower than -25°C)
Observed Band :	33kD
Background :	function:May act as a zinc-influx transporter.,similarity:Belongs to the ZIP transporter (TC 2.A.5) family.,
Function :	function:May act as a zinc-influx transporter.,similarity:Belongs to the ZIP transporter (TC 2.A.5) family.,
Subcellular Location :	Membrane ; Multi-pass membrane protein .
Expression :	Coronary artery,Duodenum,Placenta,Skin,
Sort :	24545
No4 :	1
Host :	Rabbit
Modifications :	Unmodified

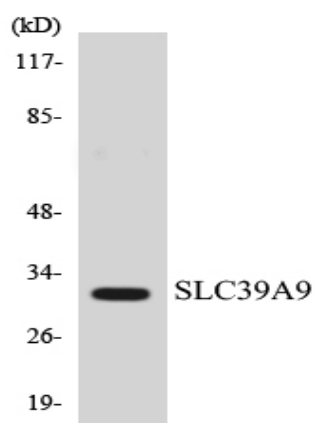
Products Images



Western Blot analysis of various cells using ZIP9 Polyclonal Antibody. Secondary antibody(catalog#:RS0002) was diluted at 1:20000



Western blot analysis of the lysates from HeLa cells using SLC39A9 antibody.



Western blot analysis of the lysates from HeLa cells using SLC39A9 antibody.