

ZIP1 Polyclonal Antibody

Catalog No :	YT4947
Reactivity :	Human;Mouse
Applications :	WB;ELISA
Target :	ZIP1
Fields :	>>Alzheimer disease;>>Parkinson disease
Gene Name :	SLC39A1
Protein Name :	Zinc transporter ZIP1
Human Gene Id :	27173
Human Swiss Prot No :	Q9NY26
Mouse Swiss Prot No :	Q9QZ03
Immunogen :	The antiserum was produced against synthesized peptide derived from human SLC39A1. AA range:111-160
Specificity :	ZIP1 Polyclonal Antibody detects endogenous levels of ZIP1 protein.
Formulation :	Liquid in PBS containing 50% glycerol, 0.5% BSA and 0.02% sodium azide.
Source :	Polyclonal, Rabbit,IgG
Dilution :	WB 1:500 - 1:2000. ELISA: 1:5000. Not yet tested in other applications.
Purification :	The antibody was affinity-purified from rabbit antiserum by affinity-chromatography using epitope-specific immunogen.
Concentration :	1 mg/ml
Storage Stability :	-15°C to -25°C/1 year(Do not lower than -25°C)

Observed Band : 38kD

Background : This gene encodes a member of the zinc-iron permease family. The encoded protein is localized to the cell membrane and acts as a zinc uptake transporter. This gene has been linked to prostate cancer, breast cancer, and Alzheimer's disease. Alternative splicing results in multiple transcript variants. [provided by RefSeq, Dec 2012],

Function : function:Mediates zinc uptake. May function as a major endogenous zinc uptake transporter in many cells of the body. Responsible for the rapid uptake and accumulation of physiologically effective zinc in prostate cells.,miscellaneous:Inhibited by Ni(2+) ions. Fe(2+) ions do not inhibit zinc uptake.,similarity:Belongs to the ZIP transporter (TC 2.A.5) family.,subcellular location:Shows a vesicular localization corresponding partially to the endoplasmic reticulum in several epithelial cell lines.,tissue specificity:Ubiquitous. Expressed in most adult and fetal tissues including the epidermis.,

Subcellular Location : Cell membrane ; Multi-pass membrane protein . Endoplasmic reticulum membrane ; Multi-pass membrane protein . Shows a vesicular localization corresponding partially to the endoplasmic reticulum in several epithelial cell lines.

Expression : Ubiquitous. Expressed in most adult and fetal tissues including the epidermis.

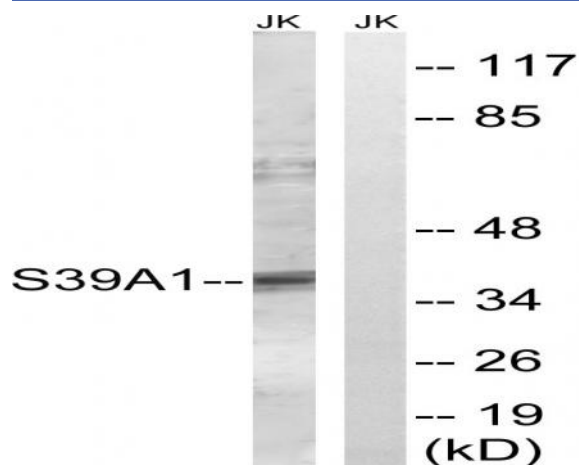
Sort : 24541

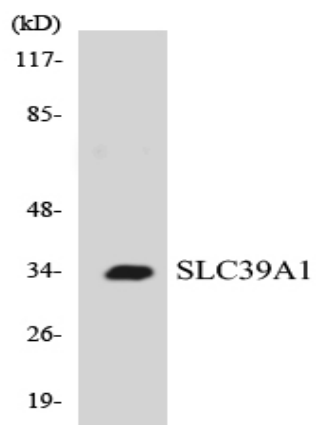
No4 : 1

Host : Rabbit

Modifications : Unmodified

Products Images





Western blot analysis of the lysates from COLO205 cells using SLC39A1 antibody.