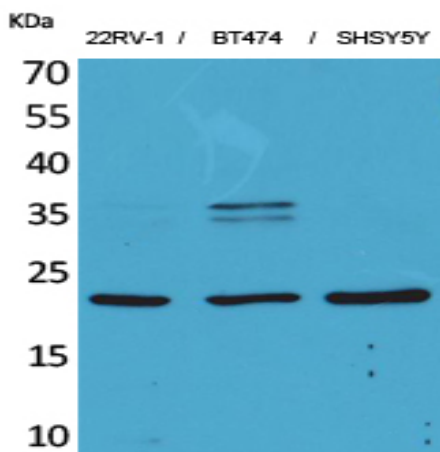


FGF-12 Polyclonal Antibody

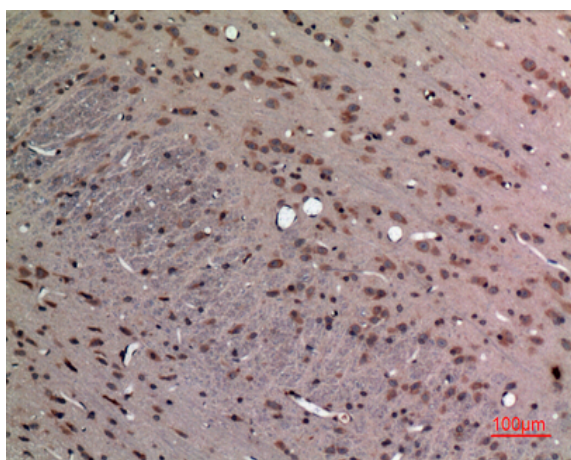
Catalog No :	YT5161
Reactivity :	Human;Mouse;Rat
Applications :	WB;IHC;IF;ELISA
Target :	FGF-12
Gene Name :	FGF12
Protein Name :	Fibroblast growth factor 12
Human Gene Id :	2257
Human Swiss Prot No :	P61328
Mouse Gene Id :	14167
Mouse Swiss Prot No :	P61329
Rat Gene Id :	170630
Rat Swiss Prot No :	P61150
Immunogen :	The antiserum was produced against synthesized peptide derived from the Internal region of human FGF12. AA range:31-80
Specificity :	FGF-12 Polyclonal Antibody detects endogenous levels of FGF-12 protein.
Formulation :	Liquid in PBS containing 50% glycerol, 0.5% BSA and 0.02% sodium azide.
Source :	Polyclonal, Rabbit,IgG
Dilution :	WB 1:500 - 1:2000. IHC: 1:100-300 ELISA: 1:20000.. IF 1:50-200
Purification :	The antibody was affinity-purified from rabbit antiserum by affinity-chromatography using epitope-specific immunogen.

Concentration :	1 mg/ml
Storage Stability :	-15°C to -25°C/1 year(Do not lower than -25°C)
Observed Band :	27kD
Cell Pathway :	MAPK_ERK_Growth;MAPK_G_Protein;Regulates Actin and Cytoskeleton;Pathways in cancer;Melanoma;
Background :	<p>The protein encoded by this gene is a member of the fibroblast growth factor (FGF) family. FGF family members possess broad mitogenic and cell survival activities, and are involved in a variety of biological processes, including embryonic development, cell growth, morphogenesis, tissue repair, tumor growth, and invasion. This growth factor lacks the N-terminal signal sequence present in most of the FGF family members, but it contains clusters of basic residues that have been demonstrated to act as a nuclear localization signal. When transfected into mammalian cells, this protein accumulated in the nucleus, but was not secreted. The specific function of this gene has not yet been determined. Two alternatively spliced transcript variants encoding distinct isoforms have been reported. [provided by RefSeq, Jul 2008],</p>
Function :	<p>function:Probably involved in nervous system development and function.,similarity:Belongs to the heparin-binding growth factors family.,subunit:Interacts with the C-terminal region of SCN9A.,tissue specificity:Brain, eye and testis; highly expressed in embryonic retina, olfactory epithelium, olfactory bulb, and in a segmental pattern of the body wall; in adult olfactory bulb, less in cerebellum, deep cerebellar nuclei, cortex and multiple midbrain structures.,</p>
Subcellular Location :	Nucleus .
Expression :	Brain, eye and testis; highly expressed in embryonic retina, olfactory epithelium, olfactory bulb, and in a segmental pattern of the body wall; in adult olfactory bulb, less in cerebellum, deep cerebellar nuclei, cortex and multiple midbrain structures.
Sort :	6010
No4 :	1
Host :	Rabbit
Modifications :	Unmodified

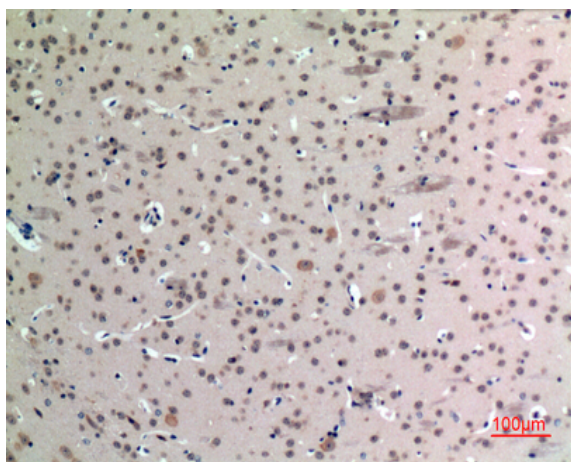
Products Images



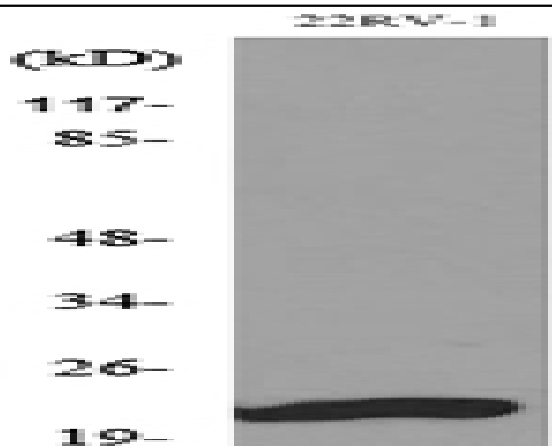
Western Blot analysis of 22RV-1, BT474, SHSY5Y cells using FGF-12 Polyclonal Antibody. Secondary antibody (catalog#:RS0002) was diluted at 1:20000 cells nucleus extracted by Minute TM Cytoplasmic and Nuclear Fractionation kit (SC-003, Inventbiotech, MN, USA).



Immunohistochemical analysis of paraffin-embedded rat-brain, antibody was diluted at 1:100



Immunohistochemical analysis of paraffin-embedded mouse-brain, antibody was diluted at 1:100



Western blot analysis of lysate from 22RV-1 cells, using FGF12 Antibody.