

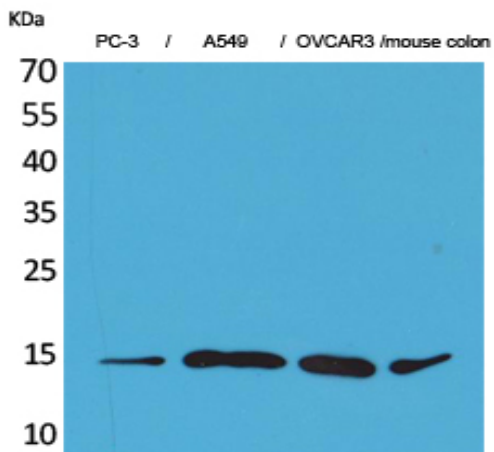
## Eotaxin-3 Polyclonal Antibody

|                              |  |
|------------------------------|--|
| <b>Catalog No :</b>          | YT5150   |
| <b>Reactivity :</b>          | Human;Rat;Mouse;   |
| <b>Applications :</b>        | WB;IHC;IF;ELISA  |
| <b>Target :</b>              | Eotaxin-3  |
| <b>Fields :</b>              | >>Cytokine-cytokine receptor interaction;>>Viral protein interaction with cytokine and cytokine receptor;>>Chemokine signaling pathway |
| <b>Gene Name :</b>           | CCL26  |
| <b>Protein Name :</b>        | C-C motif chemokine 26   |
| <b>Human Gene Id :</b>       | 10344  |
| <b>Human Swiss Prot No :</b> | Q9Y258   |
| <b>Immunogen :</b>           | The antiserum was produced against synthesized peptide derived from the Internal region of human CCL26. AA range:31-80                 |
| <b>Specificity :</b>         | Eotaxin-3 Polyclonal Antibody detects endogenous levels of Eotaxin-3 protein.  |
| <b>Formulation :</b>         | Liquid in PBS containing 50% glycerol, 0.5% BSA and 0.02% sodium azide.  |
| <b>Source :</b>              | Polyclonal, Rabbit,IgG   |
| <b>Dilution :</b>            | WB 1:500 - 1:2000. IHC: 1:100-300 ELISA: 1:20000.. IF 1:50-200   |
| <b>Purification :</b>        | The antibody was affinity-purified from rabbit antiserum by affinity-chromatography using epitope-specific immunogen.                  |
| <b>Concentration :</b>       | 1 mg/ml  |
| <b>Storage Stability :</b>   | -15°C to -25°C/1 year(Do not lower than -25°C)   |
| <b>Observed Band :</b>       | 12kD   |

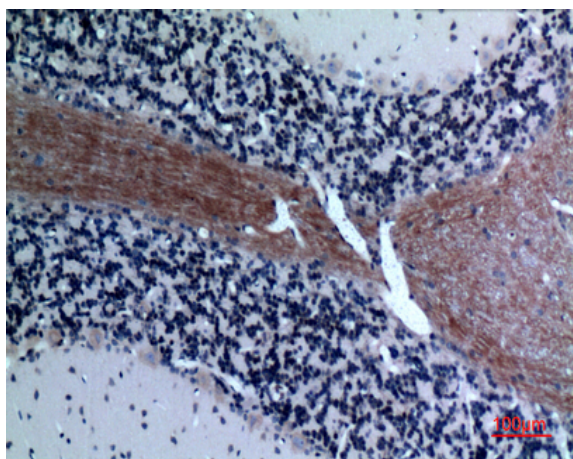
|                               |  |
|-------------------------------|--|
| <b>Cell Pathway :</b>         | <u>Cytokine-cytokine receptor interaction;Chemokine;</u>   |
| <b>Background :</b>           | <p>This gene is one of two Cys-Cys (CC) cytokine genes clustered on the q arm of chromosome 7. Cytokines are a family of secreted proteins involved in immunoregulatory and inflammatory processes. The CC cytokines are proteins characterized by two adjacent cysteines. The cytokine encoded by this gene displays chemotactic activity for normal peripheral blood eosinophils and basophils. The product of this gene is one of three related chemokines that specifically activate chemokine receptor CCR3. This chemokine may contribute to the eosinophil accumulation in atopic diseases. [provided by RefSeq, Jul 2008],</p> |
| <b>Function :</b>             | <p>function:Chemotactic for eosinophils and basophils. Binds to CCR3.,online information:CCL26 entry,similarity:Belongs to the intercrine beta (chemokine CC) family.,subunit:Monomer.,tissue specificity:Ubiquitously expressed at low levels in various tissues including heart and ovary.,</p>  |
| <b>Subcellular Location :</b> | <u>Secreted .</u>  |
| <b>Expression :</b>           | <u>Ubiquitously expressed at low levels in various tissues including heart and ovary.</u>  |
| <b>Tag :</b>                  | <u>hot</u>   |
| <b>Sort :</b>                 | <u>5579</u>  |
| <b>No4 :</b>                  | <u>1</u>   |
| <b>Host :</b>                 | <u>Rabbit</u>  |
| <b>Modifications :</b>        | <u>Unmodified</u>  |

---

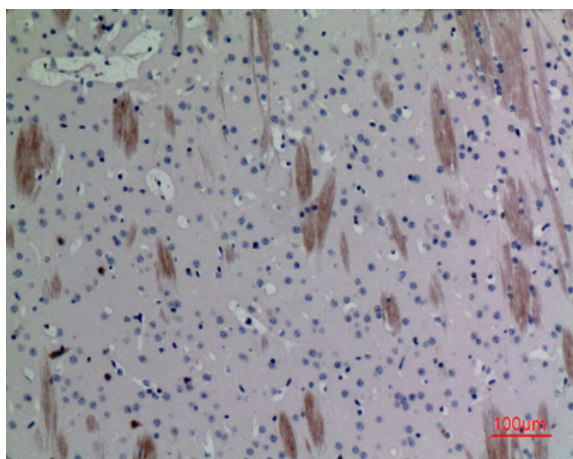
## Products Images



Western Blot analysis of PC-3, A549, OVCAR3, mouse colon cells using Eotaxin-3 Polyclonal Antibody. Secondary antibody(catalog#:RS0002) was diluted at 1:20000



Immunohistochemical analysis of paraffin-embedded rat-brain, antibody was diluted at 1:100



Immunohistochemical analysis of paraffin-embedded mouse-brain, antibody was diluted at 1:100