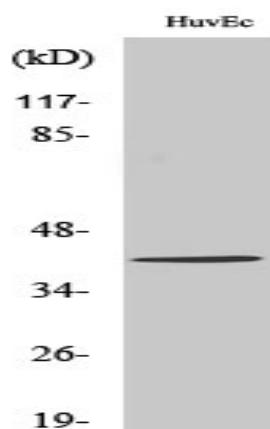


ZADH2 Polyclonal Antibody

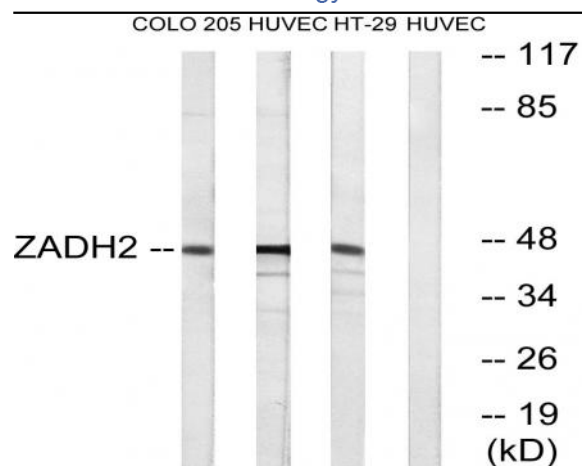
Catalog No :	YT4928
Reactivity :	Human;Mouse;Rat
Applications :	WB;IHC;IF;ELISA
Target :	ZADH2
Gene Name :	ZADH2
Protein Name :	Zinc-binding alcohol dehydrogenase domain-containing protein 2
Human Gene Id :	284273
Human Swiss Prot No :	Q8N4Q0
Mouse Gene Id :	225791
Mouse Swiss Prot No :	Q8BGC4
Immunogen :	The antiserum was produced against synthesized peptide derived from human ZADH2. AA range:191-240
Specificity :	ZADH2 Polyclonal Antibody detects endogenous levels of ZADH2 protein.
Formulation :	Liquid in PBS containing 50% glycerol, 0.5% BSA and 0.02% sodium azide.
Source :	Polyclonal, Rabbit,IgG
Dilution :	WB 1:500 - 1:2000. IHC 1:100 - 1:300. ELISA: 1:10000.. IF 1:50-200
Purification :	The antibody was affinity-purified from rabbit antiserum by affinity-chromatography using epitope-specific immunogen.
Concentration :	1 mg/ml
Storage Stability :	-15°C to -25°C/1 year(Do not lower than -25°C)

Observed Band :	45kD
Background :	similarity:Belongs to the zinc-containing alcohol dehydrogenase family. Quinone oxidoreductase subfamily.,
Function :	similarity:Belongs to the zinc-containing alcohol dehydrogenase family. Quinone oxidoreductase subfamily.,
Subcellular Location :	Peroxisome .
Expression :	Brain, Testis,
Sort :	24439
No4 :	1
Host :	Rabbit
Modifications :	Unmodified

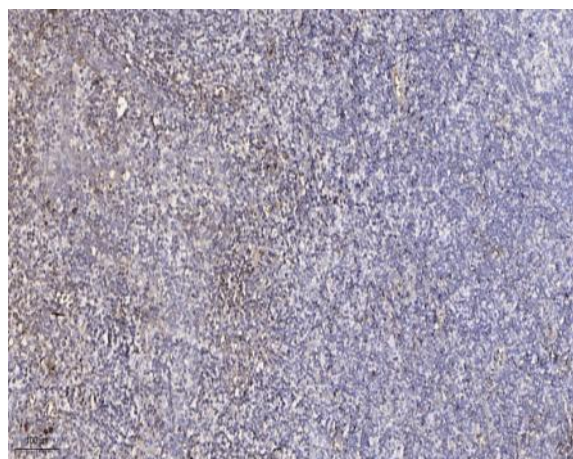
Products Images



Western Blot analysis of various cells using ZADH2 Polyclonal Antibody. Secondary antibody(catalog#:RS0002) was diluted at 1:20000



Western blot analysis of lysates from HUVEC, HT-29, and COLO cells, using ZADH2 Antibody. The lane on the right is blocked with the synthesized peptide.



Immunohistochemical analysis of paraffin-embedded human tonsil. 1, Antibody was diluted at 1:200 (4° overnight). 2, Tris-EDTA, pH 9.0 was used for antigen retrieval. 3, Secondary antibody was diluted at 1:200 (room temperature, 30 min).