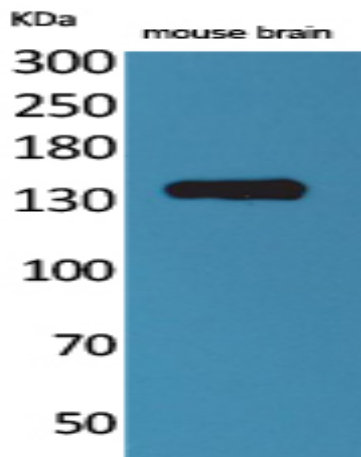


Contactin 1 Polyclonal Antibody

Catalog No :	YT5122
Reactivity :	Human;Mouse;Rat
Applications :	WB;ELISA
Target :	Contactin 1
Fields :	>>Cell adhesion molecules
Gene Name :	CNTN1
Protein Name :	Contactin-1
Human Gene Id :	1272
Human Swiss Prot No :	Q12860
Mouse Gene Id :	12805
Mouse Swiss Prot No :	P12960
Rat Gene Id :	117258
Rat Swiss Prot No :	Q63198
Immunogen :	Synthesized peptide derived from the N-terminal region of human Contactin 1.
Specificity :	Contactin 1 Polyclonal Antibody detects endogenous levels of Contactin 1 protein.
Formulation :	Liquid in PBS containing 50% glycerol, 0.5% BSA and 0.02% sodium azide.
Source :	Polyclonal, Rabbit,IgG
Dilution :	WB 1:500 - 1:2000. ELISA: 1:20000. Not yet tested in other applications.

Purification :	The antibody was affinity-purified from rabbit antiserum by affinity-chromatography using epitope-specific immunogen.
Concentration :	1 mg/ml
Storage Stability :	-15°C to -25°C/1 year(Do not lower than -25°C)
Observed Band :	113kD
Cell Pathway :	Cell adhesion molecules (CAMs);
Background :	The protein encoded by this gene is a member of the immunoglobulin superfamily. It is a glycosylphosphatidylinositol (GPI)-anchored neuronal membrane protein that functions as a cell adhesion molecule. It may play a role in the formation of axon connections in the developing nervous system. Multiple alternatively spliced transcript variants encoding different isoforms have been found for this gene. [provided by RefSeq, Dec 2011],
Function :	disease:Defects in CNTN1 are the cause of Compton-North congenital myopathy [MIM:612540]. Compton-North congenital myopathy is a familial lethal form of congenital onset muscle weakness, inherited in an autosomal-recessive fashion and characterized by a secondary loss of beta2-syntrophin and alpha-dystrobrevin from the muscle sarcolemma, central nervous system involvement, and fetal akinesia.,function:Contactins mediate cell surface interactions during nervous system development. Involved in the formation of paranodal axo-glial junctions in myelinated peripheral nerves and in the signaling between axons and myelinating glial cells via its association with CNTNAP1. Participates in oligodendrocytes generation by acting as a ligand of NOTCH1. Its association with NOTCH1 promotes NOTCH1 activation through the released notch intracellular domain (NICD) and subsequent translocation to the nucl
Subcellular Location :	[Isoform 1]: Cell membrane; Lipid-anchor, GPI-anchor; Extracellular side.; [Isoform 2]: Cell membrane; Lipid-anchor, GPI-anchor; Extracellular side.
Expression :	Strongly expressed in brain and in neuroblastoma and retinoblastoma cell lines. Lower levels of expression in lung, pancreas, kidney and skeletal muscle.
Sort :	4430
No4 :	1
Host :	Rabbit
Modifications :	Unmodified

Products Images



Western Blot analysis of mouse brain cells using Contactin 1 Polyclonal Antibody. Secondary antibody(catalog#:RS0002) was diluted at 1:20000