

WDHD1 Polyclonal Antibody

Catalog No :	YT4902
Reactivity :	Human;Mouse
Applications :	WB;IHC;IF;ELISA
Target :	WDHD1
Gene Name :	WDHD1
Protein Name :	WD repeat and HMG-box DNA-binding protein 1
Human Gene Id :	11169
Human Swiss Prot No :	O75717
Mouse Swiss Prot No :	P59328
Immunogen :	The antiserum was produced against synthesized peptide derived from human WDHD1. AA range:721-770
Specificity :	WDHD1 Polyclonal Antibody detects endogenous levels of WDHD1 protein.
Formulation :	Liquid in PBS containing 50% glycerol, 0.5% BSA and 0.02% sodium azide.
Source :	Polyclonal, Rabbit,IgG
Dilution :	WB 1:500 - 1:2000. IHC 1:100 - 1:300. ELISA: 1:10000.. IF 1:50-200
Purification :	The antibody was affinity-purified from rabbit antiserum by affinity-chromatography using epitope-specific immunogen.
Concentration :	1 mg/ml
Storage Stability :	-15°C to -25°C/1 year(Do not lower than -25°C)
Observed Band :	126kD

Background : The protein encoded by this gene contains multiple N-terminal WD40 domains and a C-terminal high mobility group (HMG) box. WD40 domains are found in a variety of eukaryotic proteins and may function as adaptor/regulatory modules in signal transduction, pre-mRNA processing and cytoskeleton assembly. HMG boxes are found in many eukaryotic proteins involved in chromatin assembly, transcription and replication. Alternative splicing results in two transcript variants encoding different isoforms. [provided by RefSeq, Jul 2008],

Function : caution:The sequence shown here is derived from an Ensembl automatic analysis pipeline and should be considered as preliminary data.,function: Binds DNA with high affinity. May also be involved in protein-protein interactions.,PTM: Phosphorylated upon DNA damage, probably by ATM or ATR.,similarity: Contains 1 HMG box DNA-binding domain.,similarity: Contains 7 WD repeats.,

Subcellular Location : Nucleus, nucleoplasm .

Expression : Embryonal rhabdomyosarcoma, Epithelium, Fetal brain, Liver, Ski

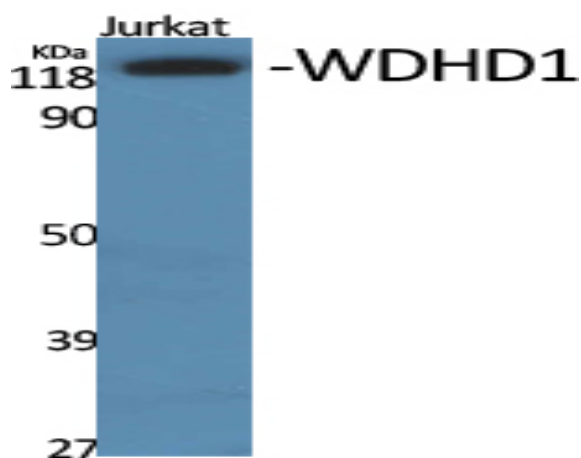
Sort : 24253

No4 : 1

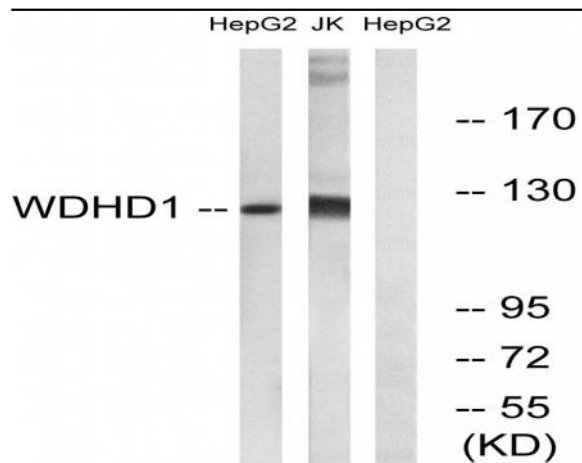
Host : Rabbit

Modifications : Unmodified

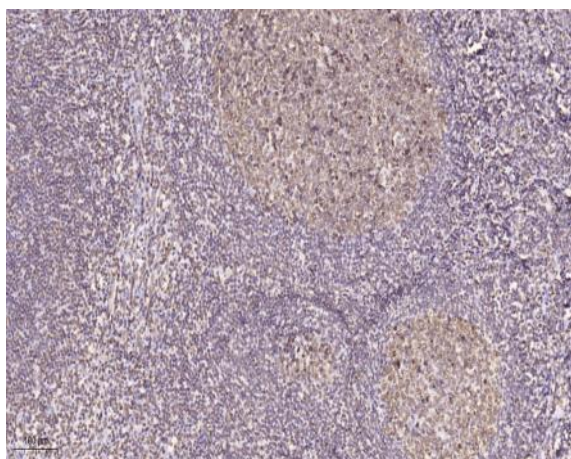
Products Images



Western Blot analysis of various cells using WDHD1 Polyclonal Antibody. Secondary antibody(catalog#:RS0002) was diluted at 1:20000



Western blot analysis of lysates from Jurkat and HepG2 cells, using WDHD1 Antibody. The lane on the right is blocked with the synthesized peptide.



Immunohistochemical analysis of paraffin-embedded human tonsil. 1, Tris-EDTA, pH 9.0 was used for antigen retrieval. 2 Antibody was diluted at 1:200 (4° overnight). 3, Secondary antibody was diluted at 1:200 (room temperature, 45min).