

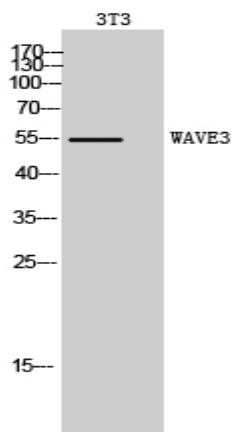
## WAVE3 Polyclonal Antibody

<b>Catalog No :</b>	YT4899
<b>Reactivity :</b>	Human;Mouse
<b>Applications :</b>	WB;IHC;IF;ELISA
<b>Target :</b>	WAVE3
<b>Fields :</b>	>>Adherens junction;>>Fc gamma R-mediated phagocytosis;>>Pathogenic Escherichia coli infection;>>Salmonella infection;>>Choline metabolism in cancer
<b>Gene Name :</b>	WASF3
<b>Protein Name :</b>	Wiskott-Aldrich syndrome protein family member 3
<b>Human Gene Id :</b>	10810
<b>Human Swiss Prot No :</b>	Q9UPY6
<b>Mouse Gene Id :</b>	245880
<b>Mouse Swiss Prot No :</b>	Q8VHI6
<b>Immunogen :</b>	The antiserum was produced against synthesized peptide derived from human WASF3. AA range:151-200
<b>Specificity :</b>	WAVE3 Polyclonal Antibody detects endogenous levels of WAVE3 protein.
<b>Formulation :</b>	Liquid in PBS containing 50% glycerol, 0.5% BSA and 0.02% sodium azide.
<b>Source :</b>	Polyclonal, Rabbit,IgG
<b>Dilution :</b>	WB 1:500 - 1:2000. IHC 1:100 - 1:300. ELISA: 1:10000.. IF 1:50-200
<b>Purification :</b>	The antibody was affinity-purified from rabbit antiserum by affinity-chromatography using epitope-specific immunogen.
<b>Concentration :</b>	1 mg/ml

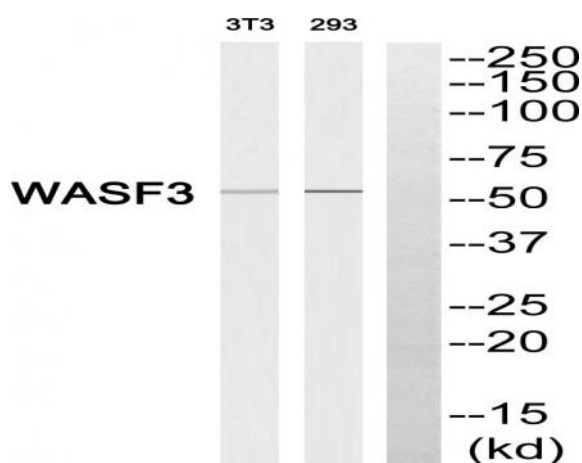
---

<b>Storage Stability :</b>	<u>-15°C to -25°C/1 year(Do not lower than -25°C)</u>
<b>Observed Band :</b>	<u>55kD</u>
<b>Cell Pathway :</b>	<u>Adherens_Junction;Fc gamma R-mediated phagocytosis;</u>
<b>Background :</b>	<u>This gene encodes a member of the Wiskott-Aldrich syndrome protein family. The gene product is a protein that forms a multiprotein complex that links receptor kinases and actin. Binding to actin occurs through a C-terminal verprolin homology domain in all family members. The multiprotein complex serves to transduce signals that involve changes in cell shape, motility or function. A pseudogene of this gene have been defined on chromosome 6. Alternative splicing results in multiple transcript variants [provided by RefSeq, May 2014],</u>
<b>Function :</b>	<u>domain: Binds the Arp2/3 complex through the C-terminal region and actin through verprolin homology (VPH) domain.,function: Downstream effector molecules involved in the transmission of signals from tyrosine kinase receptors and small GTPases to the actin cytoskeleton.,similarity: Belongs to the SCAR/WAVE family.,similarity: Contains 1 WH2 domain.,subunit: Binds actin and the Arp2/3 complex.,tissue specificity: Expressed in ovary and brain.,</u>
<b>Subcellular Location :</b>	<u>Cytoplasm, cytoskeleton.</u>
<b>Expression :</b>	<u>Expressed in ovary and brain.</u>
<b>Tag :</b>	<u>orthogonal</u>
<b>Sort :</b>	<u>1265</u>
<b>No4 :</b>	<u>1</u>
<b>Host :</b>	<u>Rabbit</u>
<b>Modifications :</b>	<u>Unmodified</u>

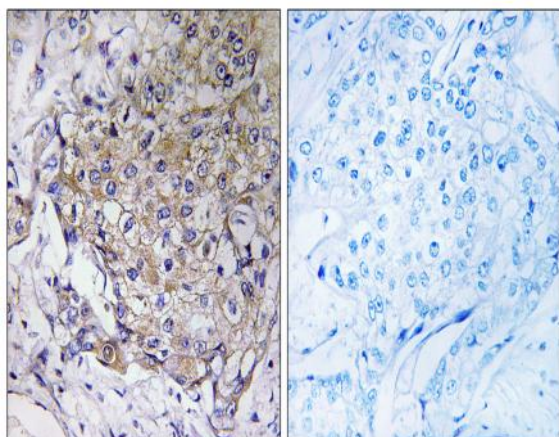
## Products Images



Western Blot analysis of 3T3 cells using WAVE3 Polyclonal Antibody. Secondary antibody(catalog#:RS0002) was diluted at 1:20000



Western blot analysis of WASF3 Antibody. The lane on the right is blocked with the WASF3 peptide.



Immunohistochemistry analysis of paraffin-embedded human breast carcinoma tissue, using WASF3 Antibody. The picture on the right is blocked with the synthesized peptide.