

VPAC1 Polyclonal Antibody

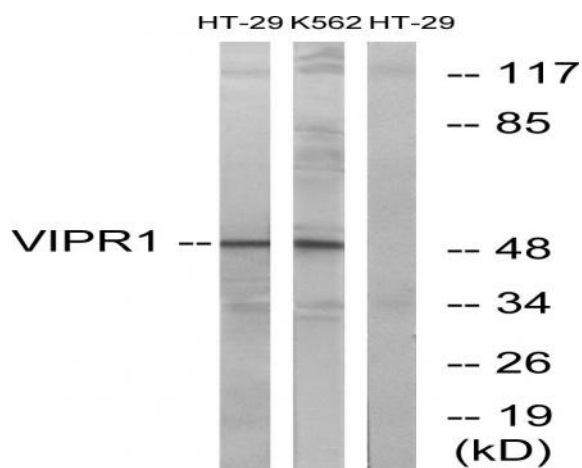
Catalog No :	YT4887
Reactivity :	Human;Mouse;Rat
Applications :	WB;IHC;IF;ELISA
Target :	VPAC1
Fields :	>>Neuroactive ligand-receptor interaction
Gene Name :	VIPR1
Protein Name :	Vasoactive intestinal polypeptide receptor 1
Human Gene Id :	7433
Human Swiss Prot No :	P32241
Mouse Gene Id :	22354
Mouse Swiss Prot No :	P97751
Rat Gene Id :	24875
Rat Swiss Prot No :	P30083
Immunogen :	The antiserum was produced against synthesized peptide derived from human VIPR1. AA range:332-381
Specificity :	VPAC1 Polyclonal Antibody detects endogenous levels of VPAC1 protein.
Formulation :	Liquid in PBS containing 50% glycerol, 0.5% BSA and 0.02% sodium azide.
Source :	Polyclonal, Rabbit,IgG
Dilution :	WB 1:500 - 1:2000. IHC 1:100 - 1:300. IF 1:200 - 1:1000. ELISA: 1:10000. Not yet tested in other applications.

Purification :	The antibody was affinity-purified from rabbit antiserum by affinity-chromatography using epitope-specific immunogen.
Concentration :	1 mg/ml
Storage Stability :	-15°C to -25°C/1 year(Do not lower than -25°C)
Observed Band :	52kD
Cell Pathway :	Neuroactive ligand-receptor interaction;
Background :	vasoactive intestinal peptide receptor 1(VIPR1) Homo sapiens This gene encodes a receptor for vasoactive intestinal peptide, a small neuropeptide. Vasoactive intestinal peptide is involved in smooth muscle relaxation, exocrine and endocrine secretion, and water and ion flux in lung and intestinal epithelia. Its actions are effected through integral membrane receptors associated with a guanine nucleotide binding protein which activates adenylate cyclase. Several transcript variants encoding different isoforms have been found for this gene. [provided by RefSeq, Oct 2011],
Function :	function:This is a receptor for VIP. The activity of this receptor is mediated by G proteins which activate adenylyl cyclase. The affinity is VIP = PACAP-27 > PACAP-38.,similarity:Belongs to the G-protein coupled receptor 2 family.,tissue specificity:In lung, HT29 colonic epithelial cells, Raji B-lymphoblasts. Lesser extent in brain, heart, kidney, liver and placenta. Not expressed in CD4+ or CD8+ T-cells. Expressed in the T-cell lines HARRIS, HuT 78, Jurkat and Tsup-1, but not in the T-cell lines PEER, MOLT-4, HSB and YT.,
Subcellular Location :	Cell membrane; Multi-pass membrane protein.
Expression :	In lung, HT-29 colonic epithelial cells, Raji B-lymphoblasts. Lesser extent in brain, heart, kidney, liver and placenta. Not expressed in CD4+ or CD8+ T-cells. Expressed in the T-cell lines HARRIS, HuT 78, Jurkat and SUP-T1, but not in the T-cell lines Peer, MOLT-4, HSB and YT.
Tag :	hot
Sort :	24193
No4 :	1
Host :	Rabbit
Modifications :	Unmodified

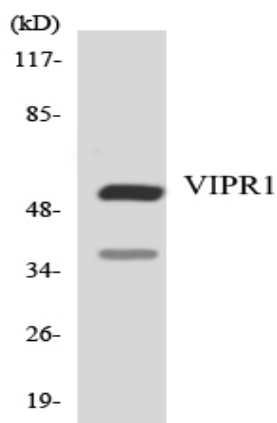
Products Images



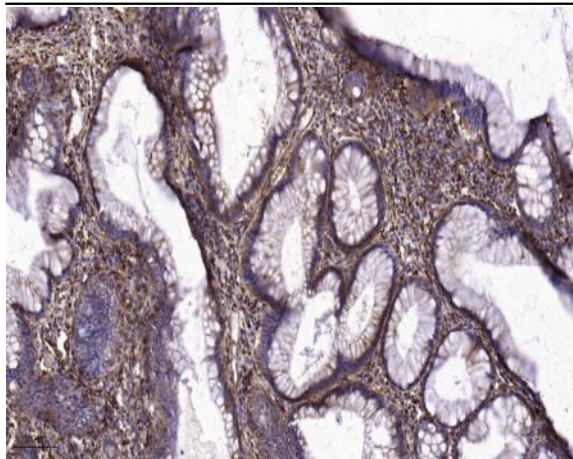
Immunofluorescence analysis of MCF7 cells, using VIPR1 Antibody. The picture on the right is blocked with the synthesized peptide.



Western blot analysis of lysates from HT-29 and K562 cells, using VIPR1 Antibody. The lane on the right is blocked with the synthesized peptide.



Western blot analysis of the lysates from HeLa cells using VIPR1 antibody.



Immunohistochemical analysis of paraffin-embedded human colon cancer. 1, Tris-EDTA, pH 9.0 was used for antigen retrieval. 2 Antibody was diluted at 1:200 (4° overnight). 3, Secondary antibody was diluted at 1:200 (room temperature, 45 min).