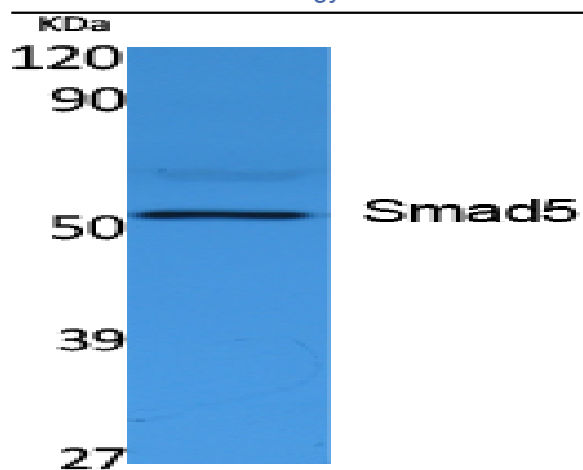


Smad5 Polyclonal Antibody

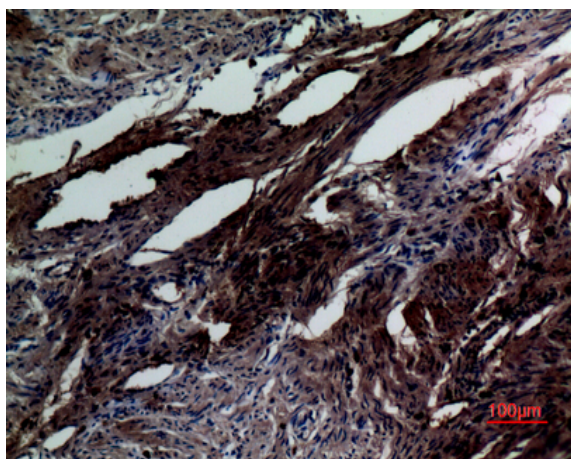
Catalog No :	YT5087
Reactivity :	Human;Rat
Applications :	WB;IHC;IF;ELISA
Target :	Smad5
Fields :	>>TGF-beta signaling pathway;>>Signaling pathways regulating pluripotency of stem cells
Gene Name :	SMAD5
Protein Name :	Mothers against decapentaplegic homolog 5
Human Gene Id :	4090
Human Swiss Prot No :	Q99717
Mouse Swiss Prot No :	P97454
Rat Gene Id :	59328
Rat Swiss Prot No :	Q9R1V3
Immunogen :	Synthesized peptide derived from the Internal region of human Smad5.
Specificity :	Smad5 Polyclonal Antibody detects endogenous levels of Smad5 protein.
Formulation :	Liquid in PBS containing 50% glycerol, 0.5% BSA and 0.02% sodium azide.
Source :	Polyclonal, Rabbit,IgG
Dilution :	WB 1:500 - 1:2000. IHC: 1:100-300 ELISA: 1:40000.. IF 1:50-200
Purification :	The antibody was affinity-purified from rabbit antiserum by affinity-chromatography using epitope-specific immunogen.

Concentration :	1 mg/ml
Storage Stability :	-15°C to -25°C/1 year(Do not lower than -25°C)
Observed Band :	52kD
Cell Pathway :	TGF-beta;
Background :	The protein encoded by this gene is involved in the transforming growth factor beta signaling pathway that results in an inhibition of the proliferation of hematopoietic progenitor cells. The encoded protein is activated by bone morphogenetic proteins type 1 receptor kinase, and may be involved in cancer. Alternative splicing results in multiple transcript variants. [provided by RefSeq, Feb 2014],
Function :	function:Transcriptional modulator activated by BMP (bone morphogenetic proteins) type 1 receptor kinase. SMAD5 is a receptor-regulated SMAD (R-SMAD).,PTM:Phosphorylated on serine by BMP (bone morphogenetic proteins) type 1 receptor kinase.,PTM:Ubiquitin-mediated proteolysis by SMAD-specific E3 ubiquitin ligase SMURF1.,similarity:Belongs to the dwarfin/SMAD family.,similarity:Contains 1 MH1 (MAD homology 1) domain.,similarity:Contains 1 MH2 (MAD homology 2) domain.,subcellular location:Cytoplasmic in the absence of ligand. Migrates to the nucleus when complexed with SMAD4.,subunit:May form trimers with the co-SMAD SMAD4. Interacts with PEBP2-alpha subunit and SMURF1. Interacts with SUV39H1 and SUV39H2.,tissue specificity:Ubiquitous.,
Subcellular Location :	Cytoplasm. Nucleus. Cytoplasmic in the absence of ligand. Migrates to the nucleus when complexed with SMAD4.
Expression :	Ubiquitous.
Sort :	16426
No4 :	1
Host :	Rabbit
Modifications :	Unmodified

Products Images



Western Blot analysis of extracts from K562 cells, using Smad5 Polyclonal Antibody. Secondary antibody(catalog#:RS0002) was diluted at 1:20000



Immunohistochemical analysis of paraffin-embedded human-uterus, antibody was diluted at 1:100