

**VAMP-1/2/3 Polyclonal Antibody**

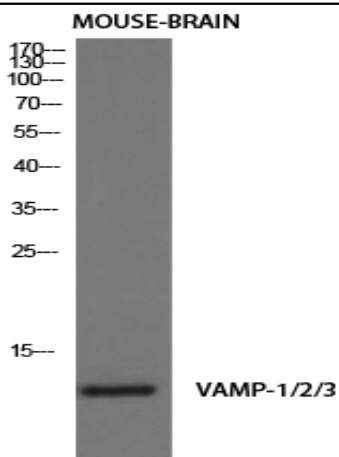
<b>Catalog No :</b>	YT4850
<b>Reactivity :</b>	Human;Mouse;Rat
<b>Applications :</b>	WB;IHC;IF;ELISA
<b>Target :</b>	VAMP-1/2/3
<b>Fields :</b>	>>SNARE interactions in vesicular transport
<b>Gene Name :</b>	VAMP1/VAMP2/VAMP3
<b>Protein Name :</b>	Vesicle-associated membrane protein 1/2/3
<b>Human Gene Id :</b>	6843/6844/9341
<b>Human Swiss Prot No :</b>	P23763/P63027/Q15836
<b>Mouse Gene Id :</b>	22317/22318/22319
<b>Rat Gene Id :</b>	25624/24803/29528
<b>Rat Swiss Prot No :</b>	Q63666/P63045/P63025
<b>Immunogen :</b>	The antiserum was produced against synthesized peptide derived from human VAMP-1/2/3. AA range:21-70
<b>Specificity :</b>	VAMP-1/2/3 Polyclonal Antibody detects endogenous levels of VAMP-1/2/3 protein.
<b>Formulation :</b>	Liquid in PBS containing 50% glycerol, 0.5% BSA and 0.02% sodium azide.
<b>Source :</b>	Polyclonal, Rabbit,IgG
<b>Dilution :</b>	WB 1:500-2000 IHC 1:100 - 1:300. ELISA: 1:10000. IF 1:50-200
<b>Purification :</b>	The antibody was affinity-purified from rabbit antiserum by affinity-chromatography using epitope-specific immunogen.

---

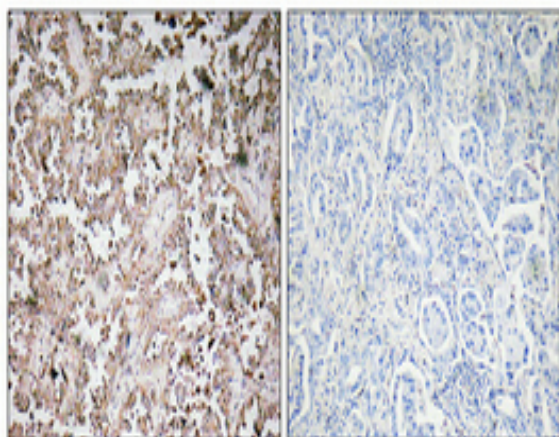
<b>Concentration :</b>	1 mg/ml
<b>Storage Stability :</b>	-15°C to -25°C/1 year(Do not lower than -25°C)
<b>Observed Band :</b>	13kD
<b>Cell Pathway :</b>	SNARE interactions in vesicular transport;
<b>Background :</b>	Synaptobrevins, syntaxins, and the synaptosomal-associated protein SNAP25 are the main components of a protein complex involved in the docking and/or fusion of synaptic vesicles with the presynaptic membrane. The protein encoded by this gene is a member of the vesicle-associated membrane protein (VAMP)/synaptobrevin family. Mutations in this gene are associated with autosomal dominant spastic ataxia 1. Multiple alternative splice variants have been described, but the full-length nature of some variants has not been defined. [provided by RefSeq, Jul 2014],
<b>Function :</b>	function:Involved in the targeting and/or fusion of transport vesicles to their target membrane.,similarity:Belongs to the synaptobrevin family.,similarity:Contains 1 v-SNARE coiled-coil homology domain.,subunit:Interacts with VAPA and VAPB.,tissue specificity:Nervous system, skeletal muscle and adipose tissue.,
<b>Subcellular Location :</b>	[Isoform 1]: Cytoplasmic vesicle, secretory vesicle, synaptic vesicle membrane ; Single-pass type IV membrane protein . Cell junction, synapse, synaptosome . ; [Isoform 2]: Cytoplasmic vesicle membrane ; Single-pass type IV membrane protein . Cell junction, synapse, synaptosome . ; [Isoform 3]: Mitochondrion outer membrane; Single-pass type IV membrane protein .
<b>Expression :</b>	Nervous system, skeletal muscle and adipose tissue.
<b>Sort :</b>	24053
<b>No4 :</b>	1
<b>Host :</b>	Rabbit
<b>Modifications :</b>	Unmodified

---

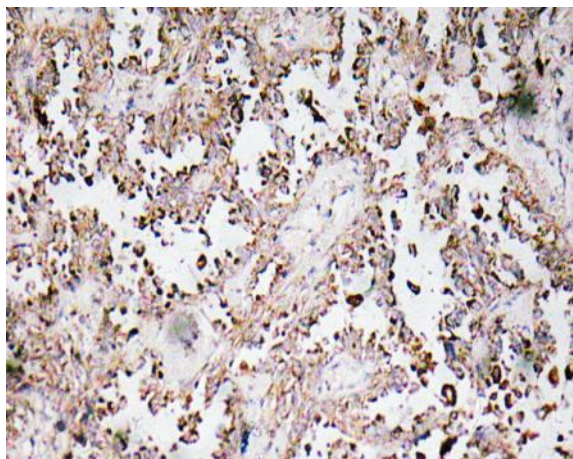
## Products Images



Western Blot analysis of mouse-brain cells using VAMP-1/2/3 Polyclonal Antibody diluted at 1:1000. Secondary antibody(catalog#:RS0002) was diluted at 1:20000



Immunohistochemical analysis of paraffin-embedded Human lung cancer. Antibody was diluted at 1:100(4° overnight). High-pressure and temperature Tris-EDTA,pH8.0 was used for antigen retrieval. Negative control (right) obtained from antibody was pre-absorbed by immunogen peptide.



Immunohistochemistry analysis of VAMP-1/2/3 antibody in paraffin-embedded human lung carcinoma tissue.