

SALL4 (PT2242) mouse mAb

Catalog No :	YM4941
Reactivity :	Human;
Applications :	IHC;WB;IF;ELISA
Target :	SALL4
Gene Name :	SALL4 ZNF797
Protein Name :	Sal-like protein 4 (Zinc finger protein 797) (Zinc finger protein SALL4)
Human Gene Id :	57167
Human Swiss Prot No :	Q9UJQ4
Immunogen :	Synthesized peptide derived from human SALL4 AA range: 750-850
Specificity :	This antibody detects endogenous levels of SALL4 protein.
Formulation :	PBS, 50% glycerol, 0.05% Proclin 300, 0.05%BSA
Source :	Mouse, Monoclonal/IgG2b, kappa
Dilution :	IHC 1:200-1000. WB 1:500-2000. IF 1:100-500. ELISA 1:1000-5000
Purification :	Protein G
Storage Stability :	-15°C to -25°C/1 year(Do not lower than -25°C)
Molecularweight :	66113kD
Observed Band :	130kD
Background :	This gene encodes a zinc finger transcription factor thought to play a role in the development of abducens motor neurons. Defects in this gene are a cause of Duane-radial ray syndrome (DRRS). Alternative splicing results in multiple transcript variants encoding different isoforms. [provided by RefSeq, Dec 2015],

Function : disease:Defects in SALL4 are the cause of Duane-radial ray syndrome (DRRS) [MIM:607323]; also known as Okihiro syndrome. DRRS is a disorder characterized by the association of forearm malformations with Duane retraction syndrome.,disease:Defects in SALL4 are the cause of IVIC syndrome [MIM:147750]. IVIC syndrome is an autosomal dominant condition characterized by upper limbs anomalies (radial ray defects, carpal bones fusion), extraocular motor disturbances, congenital bilateral non-progressive mixed hearing loss. Other less consistent malformations include heart involvement, mild thrombocytopenia and leukocytosis (before age 50), shoulder girdle hypoplasia, imperforate anus, kidney malrotation or rectovaginal fistula. The IVIC syndrome is an allelic disorder of Duane-radial ray syndrome (DRRS) with a similar phenotype.,function:Probable transcription factor.,similarity:Belongs to the sa

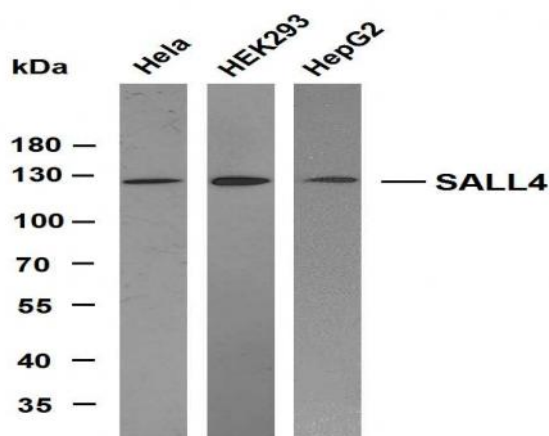
Subcellular Location : Nuclear

Expression : Expressed in testis. Constitutively expressed in acute myeloid leukemia (AML).

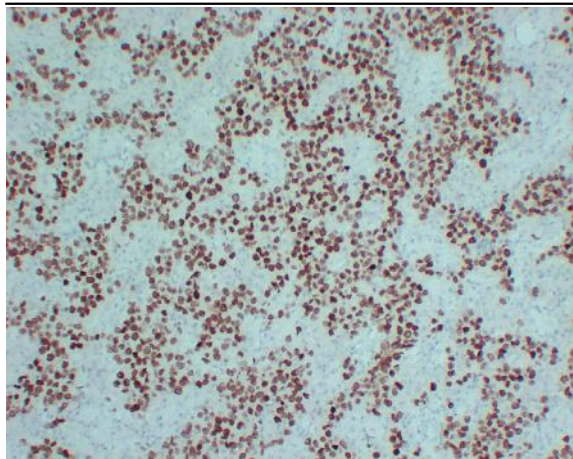
Sort : 14750

No4 : 1

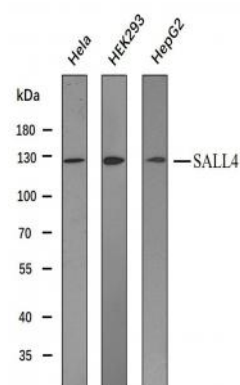
Products Images



Various whole cell lysates were separated by 10% SDS-PAGE, and the membrane was blotted with anti-SALL4 (PT2242) antibody. The HRP-conjugated Goat anti-Mouse IgG(H + L) antibody was used to detect the antibody. Lane 1: HeLa Lane 2: HEK293 Lane 3: HepG2



Immunohistochemical analysis of paraffin-embedded human Seminoma. 1, SALL4 Antibody was diluted at 1:200 (4° overnight). 2, EDTA pH 8.0 was used for antigen retrieval



Various whole cell lysates (30ug) were separated by 8% SDS-PAGE, and the membrane was blotted with SALL4. The HRP-conjugated anti-Mouse IgG antibody was used to detect the antibody.

Predicted band size: 113kDa
Observed band size: 130kDa

Western blot analysis of SALL4 Antibody at 1:1000 dilution.