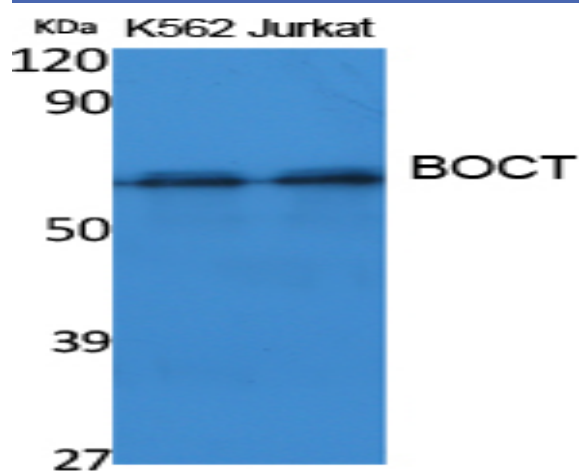


BOCT Polyclonal Antibody

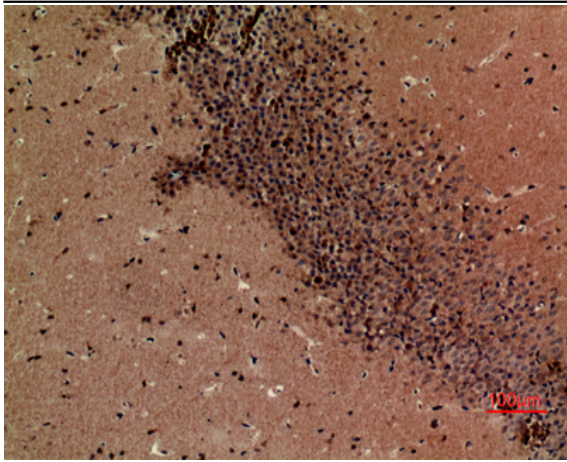
Catalog No :	YT5062
Reactivity :	Human;Mouse;Rat
Applications :	WB;IHC;IF;ELISA
Target :	BOCT
Gene Name :	SLC22A17
Protein Name :	Solute carrier family 22 member 17
Human Gene Id :	51310
Human Swiss Prot No :	Q8WUG5
Mouse Gene Id :	59049
Mouse Swiss Prot No :	Q9D9E0
Rat Gene Id :	305886
Rat Swiss Prot No :	Q9P290
Immunogen :	Synthesized peptide derived from the Internal region of human BOCT.
Specificity :	BOCT Polyclonal Antibody detects endogenous levels of BOCT protein.
Formulation :	Liquid in PBS containing 50% glycerol, 0.5% BSA and 0.02% sodium azide.
Source :	Polyclonal, Rabbit,IgG
Dilution :	WB 1:500 - 1:2000. IHC: 1:100-300 ELISA: 1:5000.. IF 1:50-200
Purification :	The antibody was affinity-purified from rabbit antiserum by affinity-chromatography using epitope-specific immunogen.

Concentration :	1 mg/ml
Storage Stability :	-15°C to -25°C/1 year(Do not lower than -25°C)
Observed Band :	57kD
Background :	similarity:Belongs to the major facilitator superfamily. Organic cation transporter family.,tissue specificity:Expressed in brain.,
Function :	similarity:Belongs to the major facilitator superfamily. Organic cation transporter family.,tissue specificity:Expressed in brain.,
Subcellular Location :	Cell membrane ; Multi-pass membrane protein . Vacuole membrane ; Multi-pass membrane protein . Upon LCN2-binding, it is internalized.
Expression :	Expressed in brain.
Sort :	2836
No4 :	1
Host :	Rabbit
Modifications :	Unmodified

Products Images



Western Blot analysis of extracts from K562, Jurkat cells, using BOCT Polyclonal Antibody. Secondary antibody(catalog#:RS0002) was diluted at 1:20000



Immunohistochemical analysis of paraffin-embedded mouse-brain, antibody was diluted at 1:100