

USP30 Polyclonal Antibody

Catalog No :	YT4834
Reactivity :	Human;Mouse;Rat
Applications :	WB;ELISA
Target :	USP30
Fields :	>>Mitophagy - animal
Gene Name :	USP30
Protein Name :	Ubiquitin carboxyl-terminal hydrolase 30
Human Gene Id :	84749
Human Swiss Prot No :	Q70CQ3
Mouse Gene Id :	100756
Mouse Swiss Prot No :	Q3UN04
Immunogen :	The antiserum was produced against synthesized peptide derived from human USP30. AA range:31-80
Specificity :	USP30 Polyclonal Antibody detects endogenous levels of USP30 protein.
Formulation :	Liquid in PBS containing 50% glycerol, 0.5% BSA and 0.02% sodium azide.
Source :	Polyclonal, Rabbit,IgG
Dilution :	WB 1:500 - 1:2000. ELISA: 1:10000. Not yet tested in other applications.
Purification :	The antibody was affinity-purified from rabbit antiserum by affinity-chromatography using epitope-specific immunogen.
Concentration :	1 mg/ml

Storage Stability : -15°C to -25°C/1 year(Do not lower than -25°C)

Observed Band : 60kd,unspecial bands(65kd,105kd,130kd)in HeLa and HCT116 cell.

Background : USP30, a member of the ubiquitin-specific protease family (see USP1, MIM 603478), is a novel mitochondrial deubiquitinating (DUB) enzyme (Nakamura and Hirose, 2008 [PubMed 18287522]).[supplied by OMIM, Dec 2008],

Function : catalytic activity:Ubiquitin C-terminal thioester + H(2)O = ubiquitin + a thiol.,function:May participate in the maintenance of mitochondrial morphology.,similarity:Belongs to the peptidase C19 family.,tissue specificity:Expressed in skeletal muscle, pancreas, liver and kidney.,

Subcellular Location : Mitochondrion outer membrane .

Expression : Expressed in skeletal muscle, pancreas, liver and kidney.

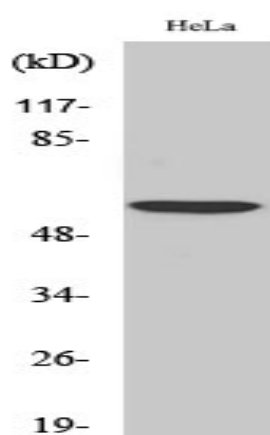
Sort : 24006

No4 : 1

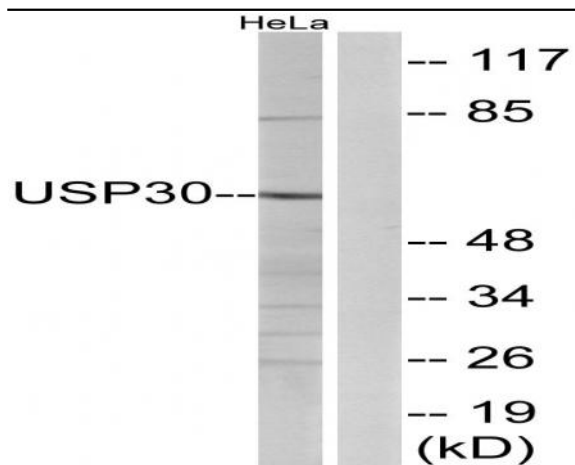
Host : Rabbit

Modifications : Unmodified

Products Images



Western Blot analysis of various cells using USP30 Polyclonal Antibody. Secondary antibody(catalog#:RS0002) was diluted at 1:20000



Western blot analysis of lysates from HeLa cells, using USP30 Antibody. The lane on the right is blocked with the synthesized peptide.