

## Sox-17 Polyclonal Antibody

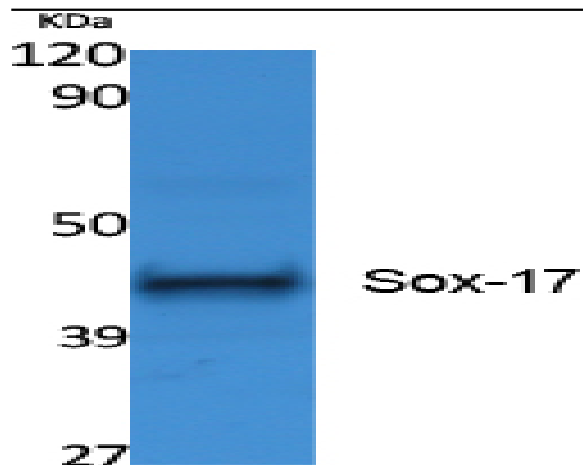
<b>Catalog No :</b>	YT5055
<b>Reactivity :</b>	Human;Mouse
<b>Applications :</b>	WB;ELISA;IHC
<b>Target :</b>	Sox-17
<b>Fields :</b>	>>Wnt signaling pathway
<b>Gene Name :</b>	SOX17
<b>Protein Name :</b>	Transcription factor SOX-17
<b>Human Gene Id :</b>	64321
<b>Human Swiss Prot No :</b>	Q9H6I2
<b>Mouse Gene Id :</b>	20671
<b>Mouse Swiss Prot No :</b>	Q61473
<b>Immunogen :</b>	Synthesized peptide derived from Sox-17 . at AA range: 90-170
<b>Specificity :</b>	Sox-17 Polyclonal Antibody detects endogenous levels of Sox-17 protein.
<b>Formulation :</b>	Liquid in PBS containing 50% glycerol, 0.5% BSA and 0.02% sodium azide.
<b>Source :</b>	Polyclonal, Rabbit,IgG
<b>Dilution :</b>	WB 1:500-2000;IHC 1:50-300; ELISA 2000-20000
<b>Purification :</b>	The antibody was affinity-purified from rabbit antiserum by affinity-chromatography using epitope-specific immunogen.
<b>Concentration :</b>	1 mg/ml

---

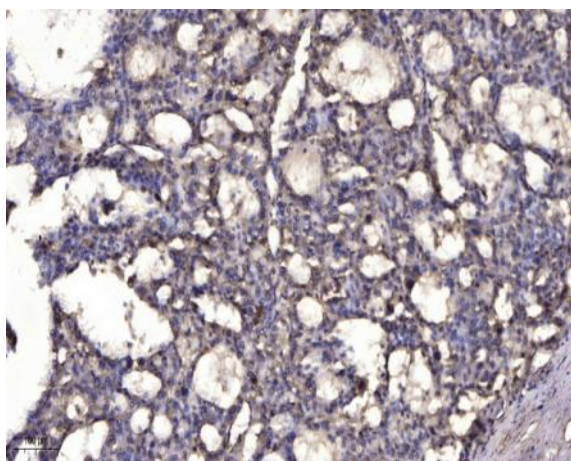
<b>Storage Stability :</b>	-15°C to -25°C/1 year(Do not lower than -25°C)
<b>Observed Band :</b>	44kD
<b>Cell Pathway :</b>	WNT;WNT-T CELL
<b>Background :</b>	This gene encodes a member of the SOX (SRY-related HMG-box) family of transcription factors involved in the regulation of embryonic development and in the determination of the cell fate. The encoded protein may act as a transcriptional regulator after forming a protein complex with other proteins. [provided by RefSeq, Jul 2008],
<b>Function :</b>	function:Probable transcriptional activator in the premeiotic germ cells. It binds to the sequences 5'-AACAAAT-'3 or 5'-AACAAAG-3'. ,similarity:Contains 1 HMG box DNA-binding domain. ,tissue specificity:Expressed in adult heart, lung, spleen, testis, ovary, placenta, fetal lung, and kidney. In normal gastrointestinal tract, it is preferentially expressed in esophagus, stomach and small intestine than in colon and rectum. ,
<b>Subcellular Location :</b>	Nucleus .
<b>Expression :</b>	Expressed in adult heart, lung, spleen, testis, ovary, placenta, fetal lung, and kidney. In normal gastrointestinal tract, it is preferentially expressed in esophagus, stomach and small intestine than in colon and rectum.
<b>Sort :</b>	16514
<b>No4 :</b>	1
<b>Host :</b>	Rabbit
<b>Modifications :</b>	Unmodified

---

## Products Images



Western Blot analysis of extracts from Jurkat cells, using Sox-17 Polyclonal Antibody. Secondary antibody(catalog#:RS0002) was diluted at 1:20000 cells nucleus extracted by Minute TM Cytoplasmic and Nuclear Fractionation kit (SC-003, Inventbiotech, MN, USA).



Immunohistochemical analysis of paraffin-embedded human liver cancer. 1, Antibody was diluted at 1:200(4° overnight). 2, Tris-EDTA,pH9.0 was used for antigen retrieval. 3,Secondary antibody was diluted at 1:200(room temperature, 45min).