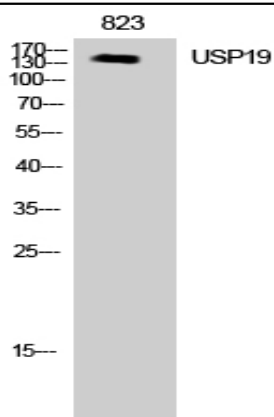


## USP19 Polyclonal Antibody

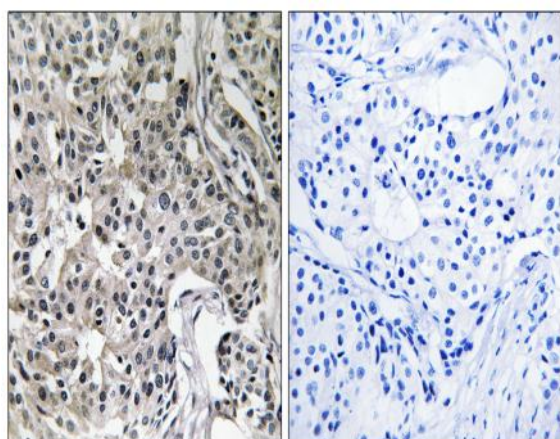
<b>Catalog No :</b>	YT4832
<b>Reactivity :</b>	Human;Mouse;Rat
<b>Applications :</b>	WB;IHC;IF;ELISA
<b>Target :</b>	USP19
<b>Gene Name :</b>	USP19
<b>Protein Name :</b>	Ubiquitin carboxyl-terminal hydrolase 19
<b>Human Gene Id :</b>	10869
<b>Human Swiss Prot No :</b>	O94966
<b>Mouse Gene Id :</b>	71472
<b>Mouse Swiss Prot No :</b>	Q3UJD6
<b>Rat Gene Id :</b>	361190
<b>Rat Swiss Prot No :</b>	Q6J1Y9
<b>Immunogen :</b>	The antiserum was produced against synthesized peptide derived from human USP19. AA range:391-440
<b>Specificity :</b>	USP19 Polyclonal Antibody detects endogenous levels of USP19 protein.
<b>Formulation :</b>	Liquid in PBS containing 50% glycerol, 0.5% BSA and 0.02% sodium azide.
<b>Source :</b>	Polyclonal, Rabbit,IgG
<b>Dilution :</b>	WB 1:500 - 1:2000. IHC 1:100 - 1:300. ELISA: 1:20000.. IF 1:50-200
<b>Purification :</b>	The antibody was affinity-purified from rabbit antiserum by affinity-chromatography using epitope-specific immunogen.

<b>Concentration :</b>	1 mg/ml
<b>Storage Stability :</b>	-15°C to -25°C/1 year(Do not lower than -25°C)
<b>Observed Band :</b>	130kD
<b>Background :</b>	<p>catalytic activity:Ubiquitin C-terminal thioester + H(2)O = ubiquitin + a thiol.,function:Involved in the ubiquitin-dependent proteolytic pathway in conjunction with the 26S proteasome.,PTM:Phosphorylated upon DNA damage, probably by ATM or ATR.,sequence caution:Translation N-terminally shortened.,similarity:Belongs to the peptidase C19 family.,similarity:Contains 1 MYND-type zinc finger.,similarity:Contains 2 CS domains.,</p>
<b>Function :</b>	<p>catalytic activity:Ubiquitin C-terminal thioester + H(2)O = ubiquitin + a thiol.,function:Involved in the ubiquitin-dependent proteolytic pathway in conjunction with the 26S proteasome.,PTM:Phosphorylated upon DNA damage, probably by ATM or ATR.,sequence caution:Translation N-terminally shortened.,similarity:Belongs to the peptidase C19 family.,similarity:Contains 1 MYND-type zinc finger.,similarity:Contains 2 CS domains.,</p>
<b>Subcellular Location :</b>	Endoplasmic reticulum membrane ; Single-pass membrane protein .
<b>Expression :</b>	Brain,Epithelium,Skin,Testis,
<b>Tag :</b>	orthogonal
<b>Sort :</b>	24004
<b>No4 :</b>	1
<b>Host :</b>	Rabbit
<b>Modifications :</b>	Unmodified

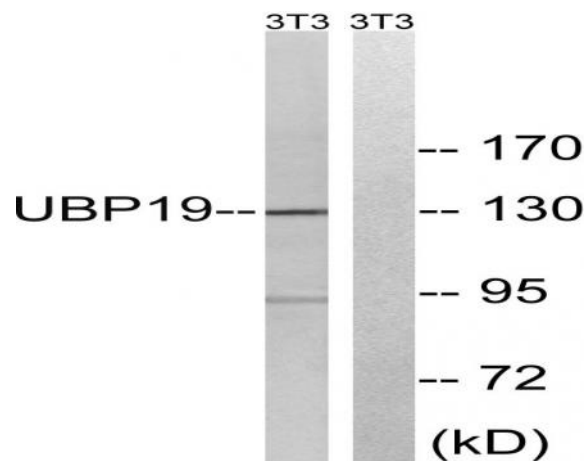
## Products Images



Western Blot analysis of NIH-3T3 cells using USP19 Polyclonal Antibody diluted at 1:2000. Secondary antibody(catalog#:RS0002) was diluted at 1:20000



Immunohistochemistry analysis of paraffin-embedded human breast carcinoma tissue, using USP19 Antibody. The picture on the right is blocked with the synthesized peptide.



Western blot analysis of lysates from NIH/3T3 cells, using USP19 Antibody. The lane on the right is blocked with the synthesized peptide.