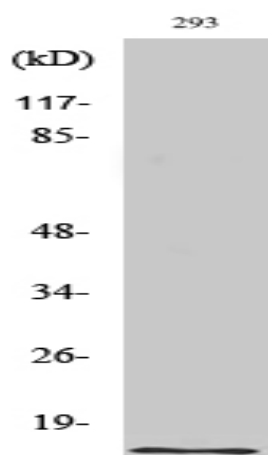


## Urotensin II Polyclonal Antibody

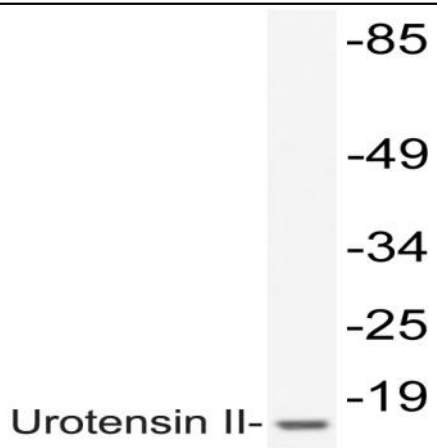
<b>Catalog No :</b>	YT4826
<b>Reactivity :</b>	Human;Monkey
<b>Applications :</b>	WB;ELISA
<b>Target :</b>	Urotensin II
<b>Fields :</b>	>>Neuroactive ligand-receptor interaction
<b>Gene Name :</b>	UTS2
<b>Protein Name :</b>	Urotensin-2
<b>Human Gene Id :</b>	10911
<b>Human Swiss Prot No :</b>	O95399
<b>Mouse Swiss Prot No :</b>	Q9QZQ3
<b>Immunogen :</b>	The antiserum was produced against synthesized peptide derived from human Urotensin II. AA range:48-97
<b>Specificity :</b>	Urotensin II Polyclonal Antibody detects endogenous levels of Urotensin II protein.
<b>Formulation :</b>	Liquid in PBS containing 50% glycerol, 0.5% BSA and 0.02% sodium azide.
<b>Source :</b>	Polyclonal, Rabbit,IgG
<b>Dilution :</b>	WB 1:500 - 1:2000. ELISA: 1:10000. Not yet tested in other applications.
<b>Purification :</b>	The antibody was affinity-purified from rabbit antiserum by affinity-chromatography using epitope-specific immunogen.
<b>Concentration :</b>	1 mg/ml
<b>Storage Stability :</b>	-15°C to -25°C/1 year(Do not lower than -25°C)

**Observed Band :** 14kD**Background :** This gene encodes a mature peptide that is an active cyclic heptapeptide absolutely conserved from lamprey to human. The active peptide acts as a vasoconstrictor and is expressed only in brain tissue. Despite the gene family name similarity, this gene is not homologous to urocortin, a member of the sauvagine/corticotropin-releasing factor/urotensin I family. Most of the proprotein is cleaved to make the mature peptide. Transcript variants encoding different preprotein isoforms have been described for this gene. [provided by RefSeq, Jul 2008],**Function :** function:Highly potent vasoconstrictor.,similarity:Belongs to the urotensin-2 family.,tissue specificity:Brain specific.,**Subcellular Location :** Secreted.**Expression :** Brain specific.**Sort :** 23991**No4 :** 1**Host :** Rabbit**Modifications :** Unmodified

## Products Images



Western Blot analysis of various cells using Urotensin II Polyclonal Antibody. Secondary antibody(catalog#:RS0002) was diluted at 1:20000



Western blot analysis of lysate from 293 cells, using Urotensin II antibody.