

**UBTD1 Polyclonal Antibody**

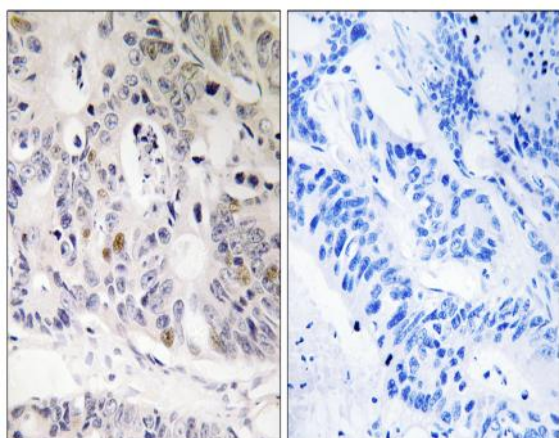
<b>Catalog No :</b>	YT4810
<b>Reactivity :</b>	Human;Mouse;Rat
<b>Applications :</b>	IHC;IF;ELISA
<b>Target :</b>	UBTD1
<b>Gene Name :</b>	UBTD1
<b>Protein Name :</b>	Ubiquitin domain-containing protein 1
<b>Human Gene Id :</b>	80019
<b>Human Swiss Prot No :</b>	Q9HAC8
<b>Mouse Gene Id :</b>	226122
<b>Mouse Swiss Prot No :</b>	Q91WB7
<b>Rat Gene Id :</b>	309373
<b>Rat Swiss Prot No :</b>	Q68FV8
<b>Immunogen :</b>	The antiserum was produced against synthesized peptide derived from human UBTD1. AA range:151-200
<b>Specificity :</b>	UBTD1 Polyclonal Antibody detects endogenous levels of UBTD1 protein.
<b>Formulation :</b>	Liquid in PBS containing 50% glycerol, 0.5% BSA and 0.02% sodium azide.
<b>Source :</b>	Polyclonal, Rabbit,IgG
<b>Dilution :</b>	IHC 1:100 - 1:300. ELISA: 1:20000.. IF 1:50-200
<b>Purification :</b>	The antibody was affinity-purified from rabbit antiserum by affinity-chromatography using epitope-specific immunogen.

---

<b>Concentration :</b>	1 mg/ml
<b>Storage Stability :</b>	-15°C to -25°C/1 year(Do not lower than -25°C)
<b>Observed Band :</b>	26kD
<b>Background :</b>	The degradation of many proteins is carried out by the ubiquitin pathway in which proteins are targeted for degradation by covalent conjugation of the polypeptide ubiquitin. This gene encodes a protein that belongs to the ubiquitin family of proteins. The encoded protein is thought to regulate E2 ubiquitin conjugating enzymes belonging to the UBE2D family. [provided by RefSeq, Mar 2014],
<b>Function :</b>	similarity:Contains 1 ubiquitin-like domain.,
<b>Expression :</b>	Coronary artery,Embryo,Placenta,
<b>Sort :</b>	23916
<b>No4 :</b>	1
<b>Host :</b>	Rabbit
<b>Modifications :</b>	Unmodified

---

## Products Images



Immunohistochemistry analysis of paraffin-embedded human colon carcinoma tissue, using UBTD1 Antibody. The picture on the right is blocked with the synthesized peptide.