

## Ubr1 Polyclonal Antibody

<b>Catalog No :</b>	YT4808
<b>Reactivity :</b>	Human;Mouse
<b>Applications :</b>	WB;IHC;IF;ELISA
<b>Target :</b>	Ubr1
<b>Gene Name :</b>	UBR1
<b>Protein Name :</b>	E3 ubiquitin-protein ligase UBR1
<b>Human Gene Id :</b>	197131
<b>Human Swiss Prot No :</b>	Q8IWW7
<b>Mouse Gene Id :</b>	22222
<b>Mouse Swiss Prot No :</b>	O70481
<b>Immunogen :</b>	The antiserum was produced against synthesized peptide derived from human UBR1. AA range:821-870
<b>Specificity :</b>	Ubr1 Polyclonal Antibody detects endogenous levels of Ubr1 protein.
<b>Formulation :</b>	Liquid in PBS containing 50% glycerol, 0.5% BSA and 0.02% sodium azide.
<b>Source :</b>	Polyclonal, Rabbit,IgG
<b>Dilution :</b>	WB 1:500 - 1:2000. IHC 1:100 - 1:300. ELISA: 1:20000.. IF 1:50-200
<b>Purification :</b>	The antibody was affinity-purified from rabbit antiserum by affinity-chromatography using epitope-specific immunogen.
<b>Concentration :</b>	1 mg/ml
<b>Storage Stability :</b>	-15°C to -25°C/1 year(Do not lower than -25°C)

---

**Observed Band :** 200kD

---

**Background :** The N-end rule pathway is one proteolytic pathway of the ubiquitin system. The recognition component of this pathway, encoded by this gene, binds to a destabilizing N-terminal residue of a substrate protein and participates in the formation of a substrate-linked multiubiquitin chain. This leads to the eventual degradation of the substrate protein. The protein described in this record has a RING-type zinc finger and a UBR-type zinc finger. Mutations in this gene have been associated with Johanson-Blizzard syndrome. [provided by RefSeq, Jul 2008],

---

**Function :** developmental stage:Expressed in fetal pancreas.,disease:Defects in UBR1 are a cause of Johanson-Blizzard syndrome (JBS) [MIM:243800]. This disorder includes congenital exocrine pancreatic insufficiency, multiple malformations such as nasal wing aplasia, and frequent mental retardation. Pancreas of individuals with JBS do not express UBR1 and show intrauterine-onset destructive pancreatitis.,domain:The RING-H2 zinc finger is an atypical RING finger with a His ligand in place of the fourth Cys of the classical motif.,function:E3 ubiquitin-protein ligase which is a component of the N-end rule pathway. Recognizes and binds to proteins bearing specific N-terminal residues that are destabilizing according to the N-end rule, leading to their ubiquitination and subsequent degradation. May be involved in pancreatic homeostasis.,pathway:Protein modification; protein ubiquitination.,PTM:Phosphoryl

---

**Subcellular Location :** Cytoplasm, cytosol .

---

**Expression :** Broadly expressed, with highest levels in skeletal muscle, kidney and pancreas. Present in acinar cells of the pancreas (at protein level).

---

**Sort :** 23910

---

**No4 :** 1

---

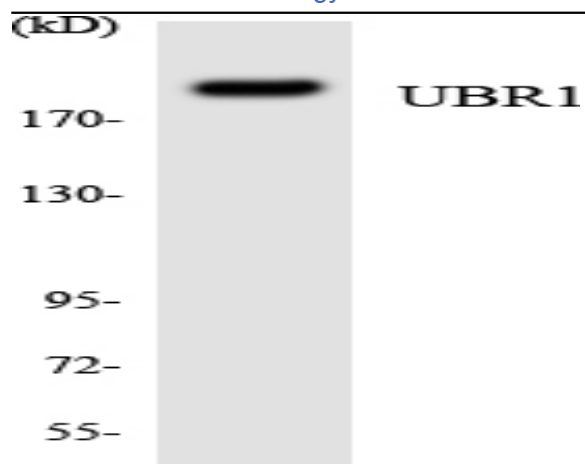
**Host :** Rabbit

---

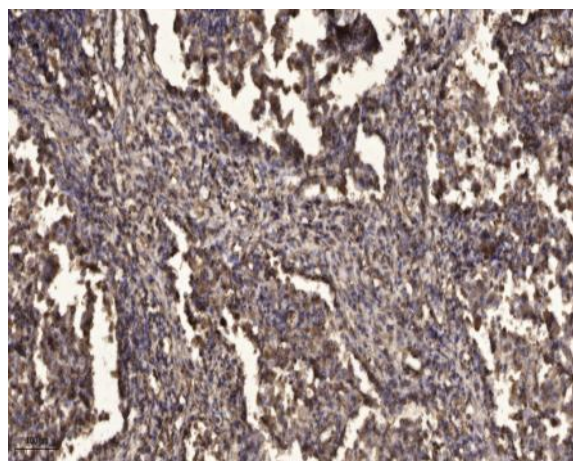
**Modifications :** Unmodified

---

## Products Images



Western blot analysis of the lysates from HUVEC cells using UBR1 antibody.



Immunohistochemical analysis of paraffin-embedded human Squamous cell carcinoma of lung. 1, Antibody was diluted at 1:200 (4° overnight). 2, Tris-EDTA, pH 9.0 was used for antigen retrieval. 3, Secondary antibody was diluted at 1:200 (room temperature, 45 min).