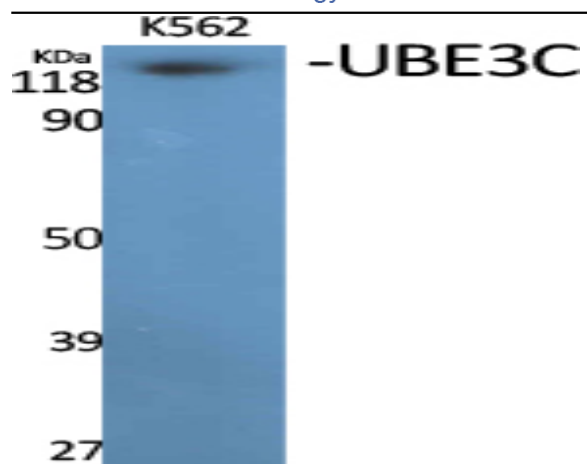


UBE3C Polyclonal Antibody

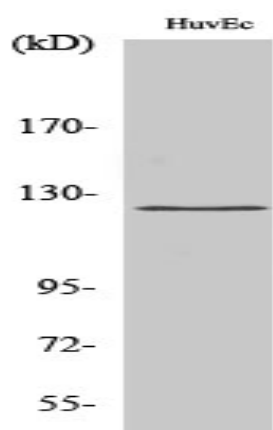
Catalog No :	YT4802
Reactivity :	Human;Mouse
Applications :	WB;ELISA
Target :	UBE3C
Fields :	>>Ubiquitin mediated proteolysis
Gene Name :	UBE3C
Protein Name :	Ubiquitin-protein ligase E3C
Human Gene Id :	148581
Human Swiss Prot No :	Q15386
Mouse Swiss Prot No :	Q80U95
Immunogen :	Synthesized peptide derived from the Internal region of human UBE3C.
Specificity :	UBE3C Polyclonal Antibody detects endogenous levels of UBE3C protein.
Formulation :	Liquid in PBS containing 50% glycerol, 0.5% BSA and 0.02% sodium azide.
Source :	Polyclonal, Rabbit,IgG
Dilution :	WB 1:500 - 1:2000. ELISA: 1:10000. Not yet tested in other applications.
Purification :	The antibody was affinity-purified from rabbit antiserum by affinity-chromatography using epitope-specific immunogen.
Concentration :	1 mg/ml
Storage Stability :	-15°C to -25°C/1 year(Do not lower than -25°C)

Observed Band :	125kD
Cell Pathway :	Ubiquitin mediated proteolysis;
Background :	function:E3 ubiquitin-protein ligase that accepts ubiquitin from the E2 ubiquitin-conjugating enzyme UBE2D1 in the form of a thioester and then directly transfers the ubiquitin to targeted substrates. It can target itself for ubiquitination in vitro and may promote its own degradation in vivo.,miscellaneous:A cysteine residue is required for ubiquitin-thioester formation.,pathway:Protein modification; protein ubiquitination.,similarity:Contains 1 HECT (E6AP-type E3 ubiquitin-protein ligase) domain.,similarity:Contains 1 IQ domain.,subunit:Interacts with 26S proteasomes. Binds CAND2.,tissue specificity:Highly expressed in skeletal muscle. Detected at much lower levels in kidney and pancreas.,
Function :	function:E3 ubiquitin-protein ligase that accepts ubiquitin from the E2 ubiquitin-conjugating enzyme UBE2D1 in the form of a thioester and then directly transfers the ubiquitin to targeted substrates. It can target itself for ubiquitination in vitro and may promote its own degradation in vivo.,miscellaneous:A cysteine residue is required for ubiquitin-thioester formation.,pathway:Protein modification; protein ubiquitination.,similarity:Contains 1 HECT (E6AP-type E3 ubiquitin-protein ligase) domain.,similarity:Contains 1 IQ domain.,subunit:Interacts with 26S proteasomes. Binds CAND2.,tissue specificity:Highly expressed in skeletal muscle. Detected at much lower levels in kidney and pancreas.,
Subcellular Location :	proteasome complex,intracellular,nucleus,cytoplasm,
Expression :	Highly expressed in skeletal muscle. Detected at much lower levels in kidney and pancreas.
Sort :	23870
No4 :	1
Host :	Rabbit
Modifications :	Unmodified

Products Images



Western Blot analysis of various cells using UBE3C Polyclonal Antibody. Secondary antibody(catalog#:RS0002) was diluted at 1:20000 cells nucleus extracted by Minute TM Cytoplasmic and Nuclear Fractionation kit (SC-003, Inventbiotech, MN, USA).



Western Blot analysis of HuvEc cells using UBE3C Polyclonal Antibody. Secondary antibody(catalog#:RS0002) was diluted at 1:20000 cells nucleus extracted by Minute TM Cytoplasmic and Nuclear Fractionation kit (SC-003, Inventbiotech, MN, USA).