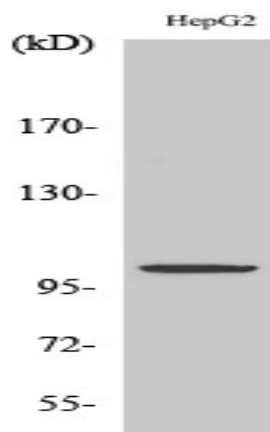


ZZZ3 Polyclonal Antibody

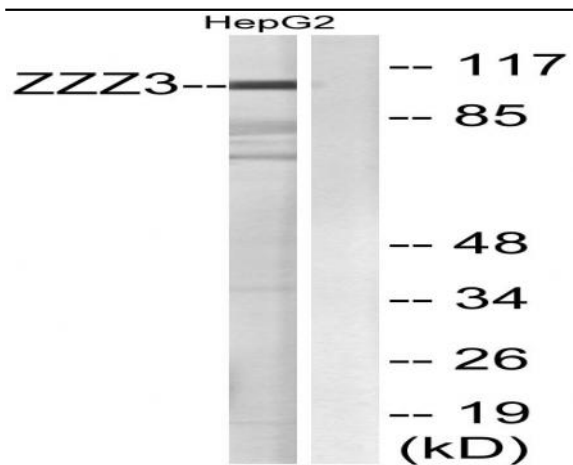
Catalog No :	YT4999
Reactivity :	Human;Mouse;Rat
Applications :	WB;ELISA
Target :	ZZZ3
Gene Name :	ZZZ3
Protein Name :	ZZ-type zinc finger-containing protein 3
Human Gene Id :	26009
Human Swiss Prot No :	Q8IYH5
Mouse Gene Id :	108946
Mouse Swiss Prot No :	Q6KAQ7
Immunogen :	The antiserum was produced against synthesized peptide derived from human ZZZ3. AA range:341-390
Specificity :	ZZZ3 Polyclonal Antibody detects endogenous levels of ZZZ3 protein.
Formulation :	Liquid in PBS containing 50% glycerol, 0.5% BSA and 0.02% sodium azide.
Source :	Polyclonal, Rabbit,IgG
Dilution :	WB 1:500 - 1:2000. ELISA: 1:5000. Not yet tested in other applications.
Purification :	The antibody was affinity-purified from rabbit antiserum by affinity-chromatography using epitope-specific immunogen.
Concentration :	1 mg/ml
Storage Stability :	-15°C to -25°C/1 year(Do not lower than -25°C)

Observed Band :	160kD
Background :	PTM:Phosphorylated upon DNA damage, probably by ATM or ATR.,similarity:Contains 1 HTH myb-type DNA-binding domain.,similarity:Contains 1 ZZ-type zinc finger.,
Function :	PTM:Phosphorylated upon DNA damage, probably by ATM or ATR.,similarity:Contains 1 HTH myb-type DNA-binding domain.,similarity:Contains 1 ZZ-type zinc finger.,
Subcellular Location :	Nucleus .
Expression :	Adipose tissue,Brain,Colon endothelium,Lymph,Placenta,Rectum tumor,Spleen,
Sort :	24803
No4 :	1
Host :	Rabbit
Modifications :	Unmodified

Products Images



Western Blot analysis of various cells using ZZZ3 Polyclonal Antibody. Secondary antibody(catalog#:RS0002) was diluted at 1:20000 cells nucleus extracted by Minute TM Cytoplasmic and Nuclear Fractionation kit (SC-003, Inventbiotech, MN, USA).



Western blot analysis of lysates from HepG2 cells, using ZZZ3 Antibody. The lane on the right is blocked with the synthesized peptide.