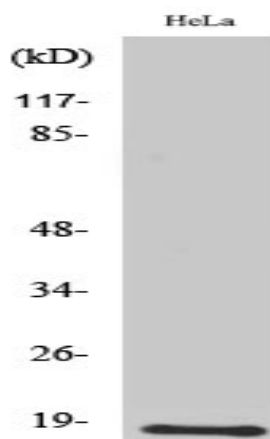


UBE2D2 Polyclonal Antibody

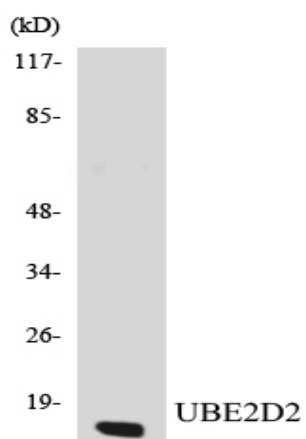
Catalog No :	YT4798
Reactivity :	Human;Mouse;Rat
Applications :	WB;ELISA
Target :	UBE2D2
Fields :	>>Ubiquitin mediated proteolysis;>>Protein processing in endoplasmic reticulum;>>Shigellosis
Gene Name :	UBE2D2
Protein Name :	Ubiquitin-conjugating enzyme E2 D2
Human Gene Id :	7322
Human Swiss Prot No :	P62837
Mouse Gene Id :	56550
Mouse Swiss Prot No :	P62838
Rat Gene Id :	641452
Rat Swiss Prot No :	P62839
Immunogen :	The antiserum was produced against synthesized peptide derived from human UBE2D2. AA range:98-147
Specificity :	UBE2D2 Polyclonal Antibody detects endogenous levels of UBE2D2 protein.
Formulation :	Liquid in PBS containing 50% glycerol, 0.5% BSA and 0.02% sodium azide.
Source :	Polyclonal, Rabbit,IgG
Dilution :	WB 1:500 - 1:2000. ELISA: 1:10000. Not yet tested in other applications.

Purification :	The antibody was affinity-purified from rabbit antiserum by affinity-chromatography using epitope-specific immunogen.
Concentration :	1 mg/ml
Storage Stability :	-15°C to -25°C/1 year(Do not lower than -25°C)
Observed Band :	17kD
Cell Pathway :	Ubiquitin mediated proteolysis;
Background :	Regulated degradation of misfolded, damaged or short-lived proteins in eukaryotes occurs via the ubiquitin (Ub)-proteasome system (UPS). An integral part of the UPS system is the ubiquitination of target proteins and covalent linkage of Ub-containing proteins to form polymeric chains, marking them as targets for 26S proteasome-mediated degradation. Ubiquitination of proteins is mediated by a cascade of enzymes which includes E1 (ubiquitin activating), E2 (ubiquitin conjugating), and E3 (ubiquitin ligases) enzymes. This gene encodes a member of the E2 enzyme family. Substrates of this enzyme include the tumor suppressor protein p53 and peroxisomal biogenesis factor 5 (PEX5). Alternative splicing results in multiple transcript variants of this gene. [provided by RefSeq, May 2013],
Function :	catalytic activity:ATP + ubiquitin + protein lysine = AMP + diphosphate + protein N-ubiquityllysine.,function:Catalyzes the covalent attachment of ubiquitin to other proteins. Mediates the selective degradation of short-lived and abnormal proteins. Functions in the E6/E6-AP-induced ubiquitination of p53/TP53.,pathway:Protein modification; protein ubiquitination.,similarity:Belongs to the ubiquitin-conjugating enzyme family.,subunit:Interacts with SCF (SKP1-CUL1-F-box protein) E3 ubiquitin ligase complex and with E3 ubiquitin-protein ligase PJA2.,
Subcellular Location :	ubiquitin ligase complex,nucleoplasm,cytosol,protein complex,extracellular exosome,
Expression :	Brain,Cajal-Retzius cell,Testis,
Sort :	23859
No4 :	1
Host :	Rabbit
Modifications :	Unmodified

Products Images



Western Blot analysis of various cells using UBE2D2 Polyclonal Antibody diluted at 1:2000. Secondary antibody(catalog#:RS0002) was diluted at 1:20000



Western blot analysis of the lysates from K562 cells using UBE2D2 antibody.