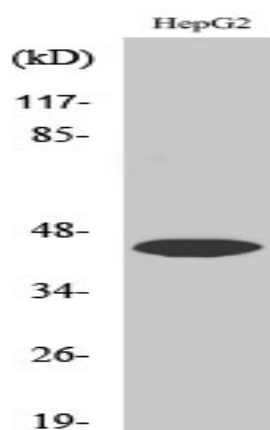


Uba5 Polyclonal Antibody

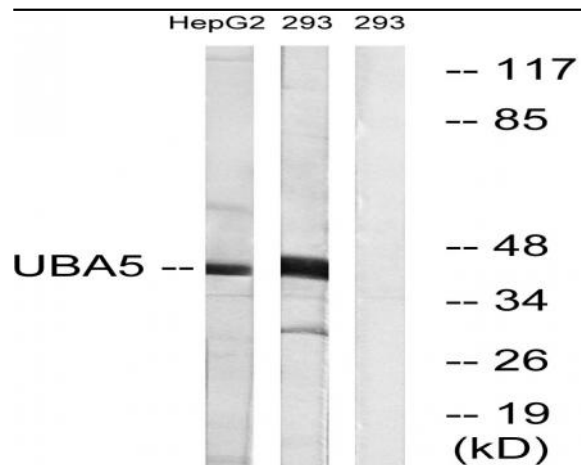
Catalog No :	YT4795
Reactivity :	Human;Mouse;Rat
Applications :	WB;IHC;IF;ELISA
Target :	Uba5
Gene Name :	UBA5
Protein Name :	Ubiquitin-like modifier-activating enzyme 5
Human Gene Id :	79876
Human Swiss Prot No :	Q9GZZ9
Mouse Gene Id :	66663
Mouse Swiss Prot No :	Q8VE47
Rat Gene Id :	300968
Rat Swiss Prot No :	Q5M7A4
Immunogen :	The antiserum was produced against synthesized peptide derived from human UBA5. AA range:281-330
Specificity :	Uba5 Polyclonal Antibody detects endogenous levels of Uba5 protein.
Formulation :	Liquid in PBS containing 50% glycerol, 0.5% BSA and 0.02% sodium azide.
Source :	Polyclonal, Rabbit,IgG
Dilution :	WB 1:500 - 1:2000. IHC 1:100 - 1:300. ELISA: 1:5000.. IF 1:50-200
Purification :	The antibody was affinity-purified from rabbit antiserum by affinity-chromatography using epitope-specific immunogen.

Concentration :	1 mg/ml
Storage Stability :	-15°C to -25°C/1 year(Do not lower than -25°C)
Observed Band :	45kD
Background :	This gene encodes a member of the E1-like ubiquitin-activating enzyme family. This protein activates ubiquitin-fold modifier 1, a ubiquitin-like post-translational modifier protein, via the formation of a high-energy thioester bond. Alternative splicing results in multiple transcript variants. A pseudogene of this gene has been identified on chromosome 1. [provided by RefSeq, Feb 2016],
Function :	function:E1-like enzyme which activates UFM1.,similarity:Belongs to the ubiquitin-activating E1 family. UBA5 subfamily.,
Subcellular Location :	Cytoplasm . Nucleus . Endoplasmic reticulum membrane . Golgi apparatus . Localizes mainly in the cytoplasm, while it localizes to the nucleus in presence of SUMO2 (PubMed:18442052). Interaction with GABARAPL2 promotes localization to the endoplasmic reticulum membrane (PubMed:30990354). .
Expression :	Widely expressed.
Sort :	23846
No4 :	1
Host :	Rabbit
Modifications :	Unmodified

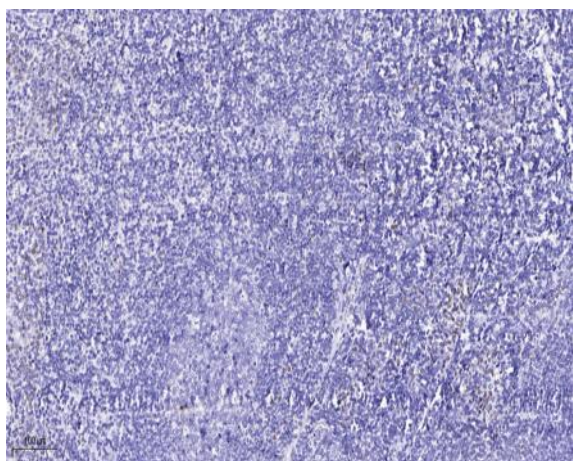
Products Images



Western Blot analysis of various cells using Uba5 Polyclonal Antibody. Secondary antibody(catalog#:RS0002) was diluted at 1:20000



Western blot analysis of lysates from HepG2 and 293 cells, using UBA5 Antibody. The lane on the right is blocked with the synthesized peptide.



Immunohistochemical analysis of paraffin-embedded human tonsil. 1, Antibody was diluted at 1:200(4° overnight). 2, Tris-EDTA,pH9.0 was used for antigen retrieval. 3,Secondary antibody was diluted at 1:200(room temperature, 45min).