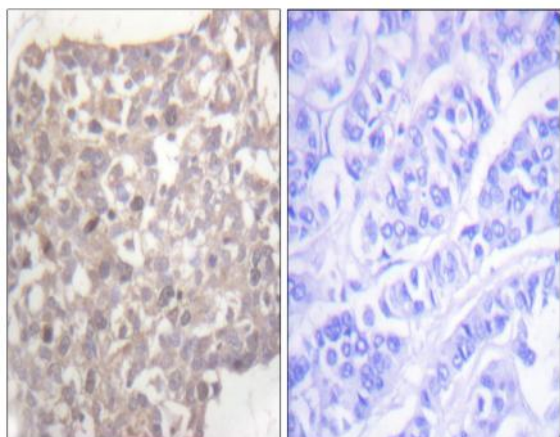


Tubulin γ Polyclonal Antibody

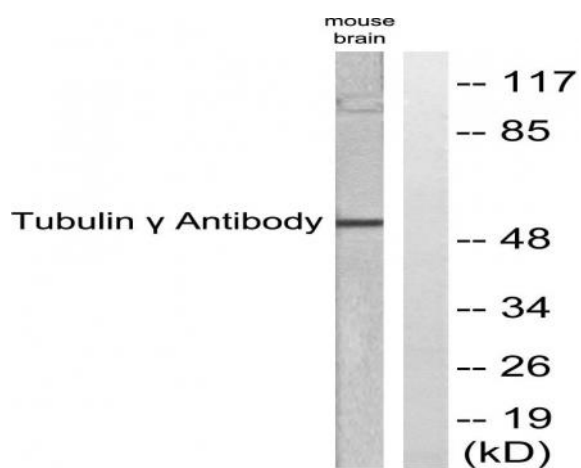
Catalog No :	YT4781
Reactivity :	Human;Mouse;Rat
Applications :	WB;IHC;IF;ELISA
Target :	Tubulin Gamma
Fields :	>>Human papillomavirus infection
Gene Name :	TUBG1
Protein Name :	Tubulin gamma-1 chain
Human Gene Id :	7283
Human Swiss Prot No :	P23258
Mouse Gene Id :	103733
Mouse Swiss Prot No :	P83887
Rat Gene Id :	252921
Rat Swiss Prot No :	P83888
Immunogen :	The antiserum was produced against synthesized peptide derived from human Tubulin gamma. AA range:386-435
Specificity :	Tubulin γ Polyclonal Antibody detects endogenous levels of Tubulin γ protein.
Formulation :	Liquid in PBS containing 50% glycerol, 0.5% BSA and 0.02% sodium azide.
Source :	Polyclonal, Rabbit,IgG
Dilution :	WB 1:500 - 1:2000. IHC 1:100 - 1:300. ELISA: 1:5000.. IF 1:50-200

Purification :	The antibody was affinity-purified from rabbit antiserum by affinity-chromatography using epitope-specific immunogen.
Concentration :	1 mg/ml
Storage Stability :	-15°C to -25°C/1 year(Do not lower than -25°C)
Observed Band :	51kD
Cell Pathway :	Protein_Acetylation
Background :	This gene encodes a member of the tubulin superfamily. The encoded protein localizes to the centrosome where it binds to microtubules as part of a complex referred to as the gamma-tubulin ring complex. The protein mediates microtubule nucleation and is required for microtubule formation and progression of the cell cycle. A pseudogene of this gene is found on chromosome 7. [provided by RefSeq, Jan 2009],
Function :	function:Tubulin is the major constituent of microtubules. Gamma tubulin is found at microtubule organizing centers (MTOC) such as the spindle poles or the centrosome, suggesting that it is involved in the minus-end nucleation of microtubule assembly.,mass spectrometry: PubMed:11840567,similarity:Belongs to the tubulin family.,subunit:Interacts with GCP2 and GCP3. Interacts with B9D2.,
Subcellular Location :	Cytoplasm, cytoskeleton, microtubule organizing center, centrosome . Cytoplasm, cytoskeleton, spindle . Localizes to mitotic spindle microtubules. .
Expression :	Mammary cancer,Skin,
Sort :	23750
No4 :	1
Host :	Rabbit
Modifications :	Unmodified

Products Images



Immunohistochemistry analysis of paraffin-embedded human breast carcinoma tissue, using Tubulin gamma Antibody. The picture on the right is blocked with the synthesized peptide.



Western blot analysis of lysates from mouse brain, using Tubulin gamma Antibody. The lane on the right is blocked with the synthesized peptide.