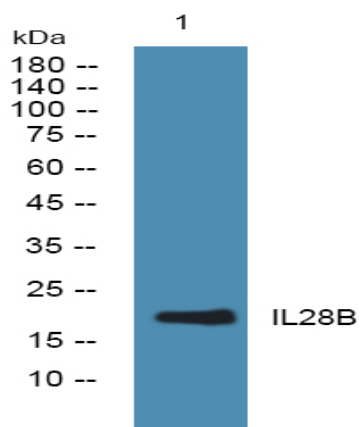


IL28B Polyclonal Antibody

Catalog No :	YN0229
Reactivity :	Human;Mouse
Applications :	WB;ELISA
Target :	IL28B
Fields :	>>Cytokine-cytokine receptor interaction;>>JAK-STAT signaling pathway
Gene Name :	IL28B IFNL3 IFNL4 IL28C ZCYTO22
Protein Name :	Interleukin-28B (IL-28B) (Cytokine Zcyto22) (Interferon lambda-3) (IFN-lambda-3) (Interferon lambda-4) (IFN-lambda-4) (Interleukin-28C) (IL-28C)
Human Gene Id :	282617
Human Swiss Prot No :	Q8IZI9
Mouse Swiss Prot No :	Q8CGK6
Immunogen :	Synthesized peptide derived from human protein . at AA range: 100-180
Specificity :	IL28B Polyclonal Antibody detects endogenous levels of protein.
Formulation :	Liquid in PBS containing 50% glycerol, and 0.02% sodium azide.
Source :	Polyclonal, Rabbit,IgG
Dilution :	WB 1:500-2000 ELISA 1:5000-20000
Purification :	The antibody was affinity-purified from rabbit antiserum by affinity-chromatography using epitope-specific immunogen.
Concentration :	1 mg/ml
Storage Stability :	-15°C to -25°C/1 year(Do not lower than -25°C)

Observed Band :	21kD
Cell Pathway :	Cytokine-cytokine receptor interaction;Jak_STAT;
Background :	<p>This gene encodes a cytokine distantly related to type I interferons and the IL-10 family. This gene, interleukin 28A (IL28A), and interleukin 29 (IL29) are three closely related cytokine genes that form a cytokine gene cluster on a chromosomal region mapped to 19q13. Expression of the cytokines encoded by the three genes can be induced by viral infection. All three cytokines have been shown to interact with a heterodimeric class II cytokine receptor that consists of interleukin 10 receptor, beta (IL10RB) and interleukin 28 receptor, alpha (IL28RA). [provided by RefSeq, Jul 2008],</p>
Function :	<p>caution:It is uncertain whether Met-1 or Met-5 is the initiator.,function:Cytokine with immunomodulatory activity. Up-regulates MHC class I antigen expression. Displays potent antiviral activity. Also displays antitumor activity. Ligand for the heterodimeric class II cytokine receptor composed of IL10RB and IL28RA. The ligand/receptor complex seems to signal through the Jak-STAT pathway.,induction:By viral infections or double stranded RNA.,similarity:Belongs to the IL-28/IL-29 family.,</p>
Subcellular Location :	Secreted .
Expression :	Pooled,
Sort :	19605
No4 :	1
Host :	Rabbit
Modifications :	Unmodified

Products Images



Western blot analysis of lysates from Jurkat cells, primary antibody was diluted at 1:1000, 4° over night