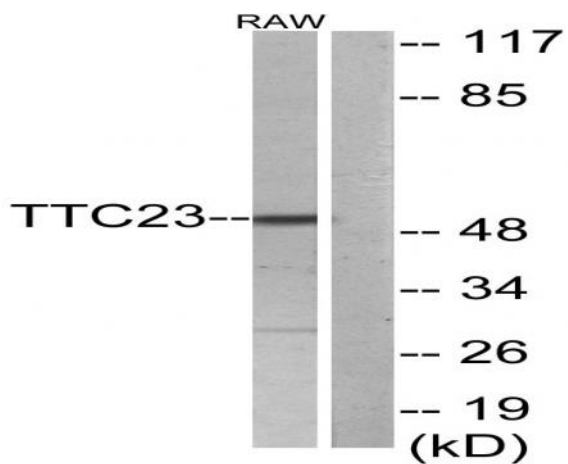


TTC23 Polyclonal Antibody

Catalog No :	YT4769
Reactivity :	Human;Rat;Mouse;
Applications :	WB;ELISA
Target :	TTC23
Gene Name :	TTC23
Protein Name :	Tetratricopeptide repeat protein 23
Human Gene Id :	64927
Human Swiss Prot No :	Q5W5X9
Mouse Swiss Prot No :	Q8CHY7
Immunogen :	The antiserum was produced against synthesized peptide derived from human TTC23. AA range:341-390
Specificity :	TTC23 Polyclonal Antibody detects endogenous levels of TTC23 protein.
Formulation :	Liquid in PBS containing 50% glycerol, 0.5% BSA and 0.02% sodium azide.
Source :	Polyclonal, Rabbit,IgG
Dilution :	WB 1:500 - 1:2000. ELISA: 1:40000. Not yet tested in other applications.
Purification :	The antibody was affinity-purified from rabbit antiserum by affinity-chromatography using epitope-specific immunogen.
Concentration :	1 mg/ml
Storage Stability :	-15°C to -25°C/1 year(Do not lower than -25°C)
Observed Band :	50kD

Background :	similarity:Contains 4 TPR repeats.,
Function :	similarity:Contains 4 TPR repeats.,
Subcellular Location :	Cell projection, cilium . Colocalizes with EVC and IQCE at the EvC zone of primary cilia. .
Expression :	Colon,Coronary artery,Placenta,
Sort :	23680
No4 :	1
Host :	Rabbit
Modifications :	Unmodified

Products Images



Western blot analysis of lysates from RAW264.7 cells, using TTC23 Antibody. The lane on the right is blocked with the synthesized peptide.