

**$\alpha$ -tubulin (Acetyl Lys40) Monoclonal Antibody(5H5)**

<b>Catalog No :</b>	YM3585
<b>Reactivity :</b>	Human;Rat;Mouse
<b>Applications :</b>	WB;IHC;IF
<b>Target :</b>	Tubulin $\alpha$
<b>Fields :</b>	>>Phagosome;>>Apoptosis;>>Tight junction;>>Gap junction;>>Alzheimer disease;>>Parkinson disease;>>Amyotrophic lateral sclerosis;>>Huntington disease;>>Prion disease;>>Pathways of neurodegeneration - multiple diseases;>>Pathogenic Escherichia coli infection;>>Salmonella infection
<b>Gene Name :</b>	TUBA1B
<b>Protein Name :</b>	Tubulin alpha-1B chain (Alpha-tubulin ubiquitous) (Tubulin K-alpha-1) (Tubulin alpha-ubiquitous chain)
<b>Human Gene Id :</b>	7277
<b>Human Swiss Prot No :</b>	P68363
<b>Mouse Swiss Prot No :</b>	P05213
<b>Rat Swiss Prot No :</b>	Q6P9V9
<b>Immunogen :</b>	Synthetic Peptide of $\alpha$ -tubulin (Acetyl Lys40)
<b>Specificity :</b>	$\alpha$ -tubulin (Acetyl Lys40) protein detects endogenous levels of $\alpha$ -tubulin (Acetyl Lys40)
<b>Formulation :</b>	Liquid in PBS containing 50% glycerol, 0.5% BSA and 0.02% sodium azide.
<b>Source :</b>	Monoclonal, Mouse
<b>Dilution :</b>	WB 1:1000-2000, IHC 1:100-200, IF 1:50-200
<b>Purification :</b>	The antibody was affinity-purified from mouse ascites by affinity-

---

chromatography using specific immunogen.

---

**Concentration :** 1 mg/ml

---

**Storage Stability :** -15°C to -25°C/1 year(Do not lower than -25°C)

---

**Observed Band :** 52kD

---

**Cell Pathway :** Gap junction;Pathogenic Escherichia coli infection;

---

**Background :** function:Tubulin is the major constituent of microtubules. It binds two moles of GTP, one at an exchangeable site on the beta chain and one at a non-exchangeable site on the alpha-chain.,PTM:Undergoes a tyrosination/detyrosination cycle, the cyclic removal and re-addition of a C-terminal tyrosine residue by the enzymes tubulin tyrosine carboxypeptidase (TTCP) and tubulin tyrosine ligase (TTL), respectively.,similarity:Belongs to the tubulin family.,subunit:Dimer of alpha and beta chains.,

---

**Function :** function:Tubulin is the major constituent of microtubules. It binds two moles of GTP, one at an exchangeable site on the beta chain and one at a non-exchangeable site on the alpha-chain.,PTM:Undergoes a tyrosination/detyrosination cycle, the cyclic removal and re-addition of a C-terminal tyrosine residue by the enzymes tubulin tyrosine carboxypeptidase (TTCP) and tubulin tyrosine ligase (TTL), respectively.,similarity:Belongs to the tubulin family.,subunit:Dimer of alpha and beta chains.,

---

**Subcellular Location :** Cytoplasm, cytoskeleton.

---

**Expression :** Brain,Cajal-Retzius cell,Colon,Embryonic kidney,Eye,Fetal brain cortex,Keratinocyte

---

**Tag :** orthogonal

---

**Sort :** 24816

---

**No4 :** 1

---

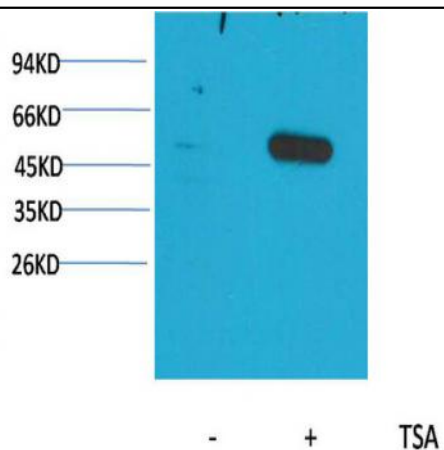
**Host :** Mouse

---

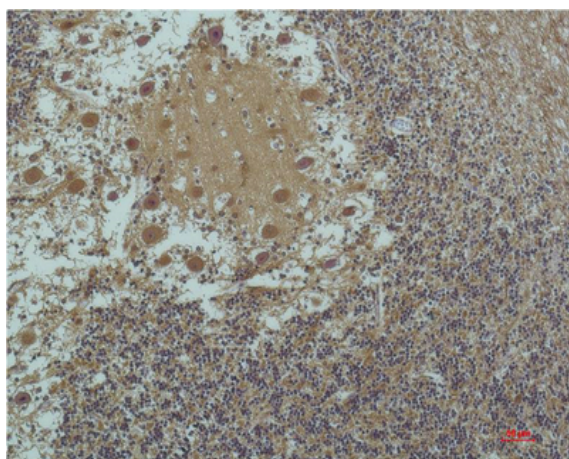
**Modifications :** Acetyl

---

[Products Images](#)



Western blot analysis of extracts from Hela cells, untreated (-) or treated with TSA ( $1\mu\text{M}$ , 18 hr; +), using Acetyl-  $\alpha$ -tubulin(Lys40) Mouse mAb 1:2000.



Immunohistochemical analysis of paraffin-embedded Human Brain Tissue using  $\alpha$ -tubulin(Acetyl Lys40) Mouse mAb diluted at 1:200.