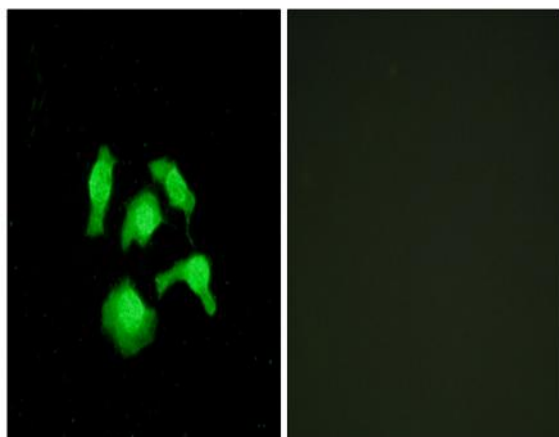


TSC-22 Polyclonal Antibody

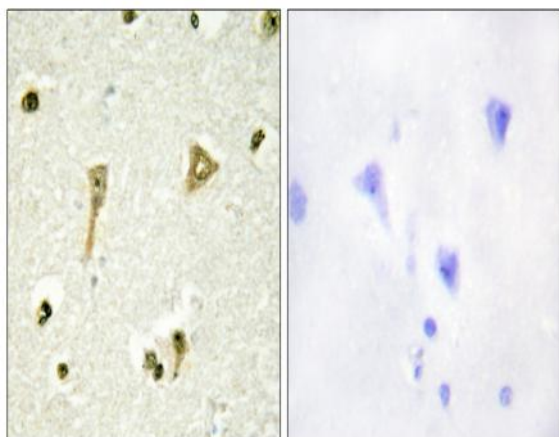
Catalog No :	YT4758
Reactivity :	Human;Mouse;Rat
Applications :	WB;IHC;IF;ELISA
Target :	TSC-22
Gene Name :	TSC22D1
Protein Name :	TSC22 domain family protein 1
Human Gene Id :	8848
Human Swiss Prot No :	Q15714
Mouse Gene Id :	21807
Mouse Swiss Prot No :	P62500
Rat Gene Id :	498545
Rat Swiss Prot No :	P62501
Immunogen :	The antiserum was produced against synthesized peptide derived from human TSC22D1. AA range:71-120
Specificity :	TSC-22 Polyclonal Antibody detects endogenous levels of TSC-22 protein.
Formulation :	Liquid in PBS containing 50% glycerol, 0.5% BSA and 0.02% sodium azide.
Source :	Polyclonal, Rabbit,IgG
Dilution :	WB 1:500 - 1:2000. IHC 1:100 - 1:300. IF 1:200 - 1:1000. ELISA: 1:20000. Not yet tested in other applications.
Purification :	The antibody was affinity-purified from rabbit antiserum by affinity-chromatography using epitope-specific immunogen.

Concentration :	1 mg/ml
Storage Stability :	-15°C to -25°C/1 year(Do not lower than -25°C)
Observed Band :	16kD
Background :	This gene encodes a member of the TSC22 domain family of leucine zipper transcription factors. The encoded protein is stimulated by transforming growth factor beta, and regulates the transcription of multiple genes including C-type natriuretic peptide. The encoded protein may play a critical role in tumor suppression through the induction of cancer cell apoptosis, and a single nucleotide polymorphism in the promoter of this gene has been associated with diabetic nephropathy. Alternatively spliced transcript variants encoding multiple isoforms have been observed for this gene. [provided by RefSeq, Aug 2011],
Function :	function:Transcriptional repressor. Acts on the C-type natriuretic peptide (CNP) promoter.,induction:In aortic endothelial cells, induced by cytokines, including TGFB.,similarity:Belongs to the TSC-22/Dip/Bun family.,subunit:Homodimer or heterodimer. Can form an heterodimer with TSC22D4.,tissue specificity:Widely expressed in fetal and adult tissues.,
Subcellular Location :	Cytoplasm . Nucleus .
Expression :	Widely expressed in fetal and adult tissues.
Sort :	23641
No4 :	1
Host :	Rabbit
Modifications :	Unmodified

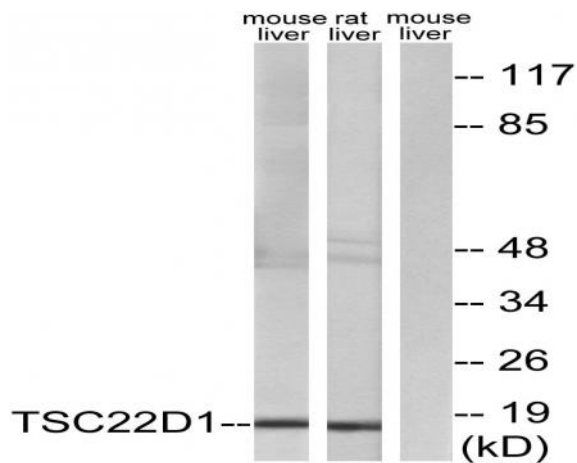
Products Images



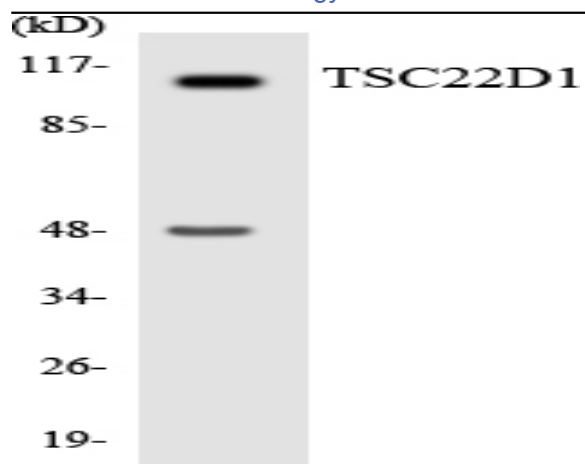
Immunofluorescence analysis of HepG2 cells, using TSC22D1 Antibody. The picture on the right is blocked with the synthesized peptide.



Immunohistochemistry analysis of paraffin-embedded human brain tissue, using TSC22D1 Antibody. The picture on the right is blocked with the synthesized peptide.



Western blot analysis of lysates from mouse liver and rat liver cells, using TSC22D1 Antibody. The lane on the right is blocked with the synthesized peptide.



Western blot analysis of the lysates from HepG2 cells using TSC22D1 antibody.