

## TSA-1 Polyclonal Antibody

<b>Catalog No :</b>	YT4757
<b>Reactivity :</b>	Human;Mouse
<b>Applications :</b>	IF;ELISA
<b>Target :</b>	TSA-1
<b>Gene Name :</b>	LY6E
<b>Protein Name :</b>	Lymphocyte antigen 6E
<b>Human Gene Id :</b>	4061
<b>Human Swiss Prot No :</b>	Q16553
<b>Mouse Swiss Prot No :</b>	Q64253
<b>Immunogen :</b>	The antiserum was produced against synthesized peptide derived from human LY6E. AA range:17-66
<b>Specificity :</b>	TSA-1 Polyclonal Antibody detects endogenous levels of TSA-1 protein.
<b>Formulation :</b>	Liquid in PBS containing 50% glycerol, 0.5% BSA and 0.02% sodium azide.
<b>Source :</b>	Polyclonal, Rabbit,IgG
<b>Dilution :</b>	IF 1:200 - 1:1000. ELISA: 1:20000. Not yet tested in other applications.
<b>Purification :</b>	The antibody was affinity-purified from rabbit antiserum by affinity-chromatography using epitope-specific immunogen.
<b>Concentration :</b>	1 mg/ml
<b>Storage Stability :</b>	-15°C to -25°C/1 year(Do not lower than -25°C)
<b>Molecularweight :</b>	14kD

**Background :** induction:By retinoic acid; in promyelocytic leukemia NB4 and in myeloblast HL-60 cell lines. Activated by IFN-alpha in monocytic cell line U-937 and in peripheral blood monocyte cells.,similarity:Contains 1 UPAR/Ly6 domain.,tissue specificity:Widely expressed, predominantly in liver, kidney, ovary, spleen and peripheral blood Leukocytes.,

**Function :** induction:By retinoic acid; in promyelocytic leukemia NB4 and in myeloblast HL-60 cell lines. Activated by IFN-alpha in monocytic cell line U-937 and in peripheral blood monocyte cells.,similarity:Contains 1 UPAR/Ly6 domain.,tissue specificity:Widely expressed, predominantly in liver, kidney, ovary, spleen and peripheral blood Leukocytes.,

**Subcellular Location :** Cell membrane ; Lipid-anchor, GPI-anchor .

**Expression :** Widely expressed, predominantly in liver, kidney, ovary, spleen and peripheral blood Leukocytes.

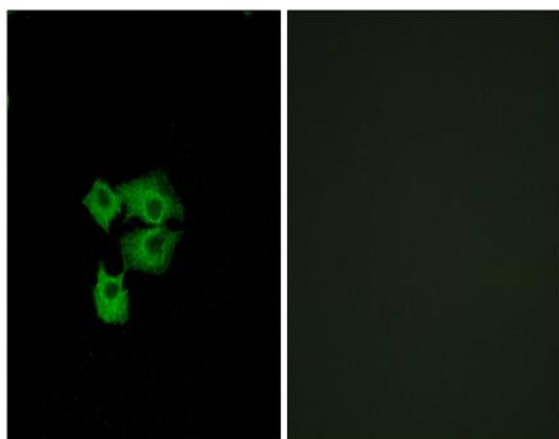
**Sort :** 23638

**No4 :** 1

**Host :** Rabbit

**Modifications :** Unmodified

## Products Images



Immunofluorescence analysis of A549 cells, using LY6E Antibody. The picture on the right is blocked with the synthesized peptide.