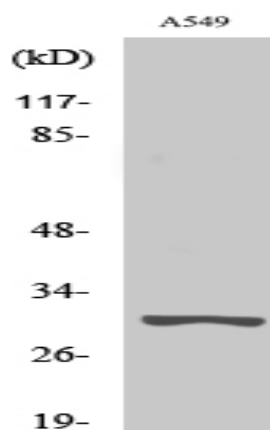


Trypsin-3 Polyclonal Antibody

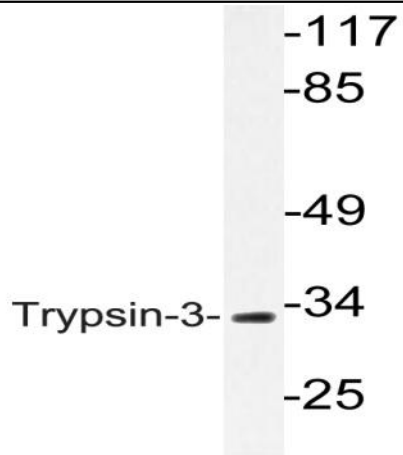
Catalog No :	YT4754
Reactivity :	Human
Applications :	WB;ELISA
Target :	Trypsin-3
Fields :	>>Neuroactive ligand-receptor interaction;>>Pancreatic secretion;>>Protein digestion and absorption;>>Influenza A
Gene Name :	PRSS3
Protein Name :	Trypsin-3
Human Gene Id :	5646
Human Swiss Prot No :	P35030
Immunogen :	The antiserum was produced against synthesized peptide derived from human Trypsin-3. AA range:117-166
Specificity :	Trypsin-3 Polyclonal Antibody detects endogenous levels of Trypsin-3 protein.
Formulation :	Liquid in PBS containing 50% glycerol, 0.5% BSA and 0.02% sodium azide.
Source :	Polyclonal, Rabbit,IgG
Dilution :	WB 1:500 - 1:2000. ELISA: 1:40000. Not yet tested in other applications.
Purification :	The antibody was affinity-purified from rabbit antiserum by affinity-chromatography using epitope-specific immunogen.
Concentration :	1 mg/ml
Storage Stability :	-15°C to -25°C/1 year(Do not lower than -25°C)
Observed Band :	32kD

Cell Pathway :	Neuroactive ligand-receptor interaction;
Background :	This gene encodes a trypsinogen, which is a member of the trypsin family of serine proteases. This enzyme is expressed in the brain and pancreas and is resistant to common trypsin inhibitors. It is active on peptide linkages involving the carboxyl group of lysine or arginine. This gene is localized to the locus of T cell receptor beta variable orphans on chromosome 9. Four transcript variants encoding different isoforms have been described for this gene. [provided by RefSeq, Oct 2010],
Function :	catalytic activity:Preferential cleavage: Arg- -Xaa, Lys- -Xaa.,cofactor:Binds 1 calcium ion per subunit.,similarity:Belongs to the peptidase S1 family.,similarity:Contains 1 peptidase S1 domain.,tissue specificity:Pancreas and brain.,
Subcellular Location :	Secreted .
Expression :	Detected in pancreas and pancreatic fluid (at protein level) (PubMed:6698368). Expressed in pancreas and brain (PubMed:8294000). Detected in ileum (PubMed:12021776).
Sort :	23631
No4 :	1
Host :	Rabbit
Modifications :	Unmodified

Products Images



Western Blot analysis of various cells using Trypsin-3 Polyclonal Antibody. Secondary antibody(catalog#:RS0002) was diluted at 1:20000



Western blot analysis of lysate from A549 cells, using Trypsin-3 antibody.