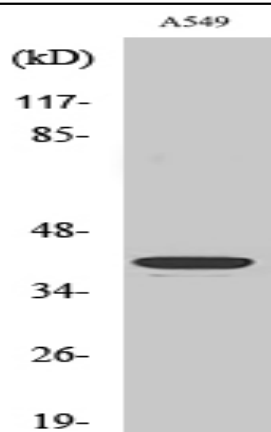


TROP-2 Polyclonal Antibody

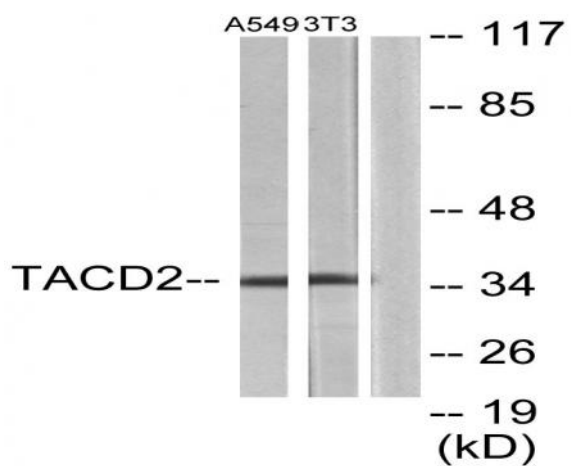
Catalog No :	YT4745
Reactivity :	Human;Mouse;Rat
Applications :	WB;IHC;IF;ELISA
Target :	TROP-2
Gene Name :	TACSTD2
Protein Name :	Tumor-associated calcium signal transducer 2
Human Gene Id :	4070
Human Swiss Prot No :	P09758
Mouse Gene Id :	56753
Mouse Swiss Prot No :	Q8BGV3
Rat Gene Id :	494343
Rat Swiss Prot No :	Q6P9Z6
Immunogen :	The antiserum was produced against synthesized peptide derived from human TACD2. AA range:131-180
Specificity :	TROP-2 Polyclonal Antibody detects endogenous levels of TROP-2 protein.
Formulation :	Liquid in PBS containing 50% glycerol, 0.5% BSA and 0.02% sodium azide.
Source :	Polyclonal, Rabbit,IgG
Dilution :	WB 1:500 - 1:2000. IHC 1:100 - 1:300. ELISA: 1:20000.. IF 1:50-200
Purification :	The antibody was affinity-purified from rabbit antiserum by affinity-chromatography using epitope-specific immunogen.

Concentration :	1 mg/ml
Storage Stability :	-15°C to -25°C/1 year(Do not lower than -25°C)
Observed Band :	35kD
Background :	This intronless gene encodes a carcinoma-associated antigen. This antigen is a cell surface receptor that transduces calcium signals. Mutations of this gene have been associated with gelatinous drop-like corneal dystrophy.[provided by RefSeq, Dec 2009],
Function :	disease:Defects in TACSTD2 are the cause of gelatinous drop-like corneal dystrophy (GDLD) [MIM:204870]; also known as lattice corneal dystrophy type III. GDLD is an autosomal recessive disorder characterized by grayish corneal amyloid deposits that cause severe visual impairment.,function:GA733 tumor-associated antigen gene family may function as growth factor receptors.,PTM:The N-terminus is blocked.,similarity:Contains 1 thyroglobulin type-1 domain.,tissue specificity:Placenta, pancreatic carcinoma cell lines.,
Subcellular Location :	Membrane; Single-pass type I membrane protein.
Expression :	Placenta, pancreatic carcinoma cell lines.
Tag :	hot
Sort :	23585
No4 :	1
Host :	Rabbit
Modifications :	Unmodified

Products Images



Western Blot analysis of various cells using TROP-2 Polyclonal Antibody. Secondary antibody(catalog#:RS0002) was diluted at 1:20000



Western blot analysis of lysates from A549 and NIH/3T3 cells, using TACD2 Antibody. The lane on the right is blocked with the synthesized peptide.