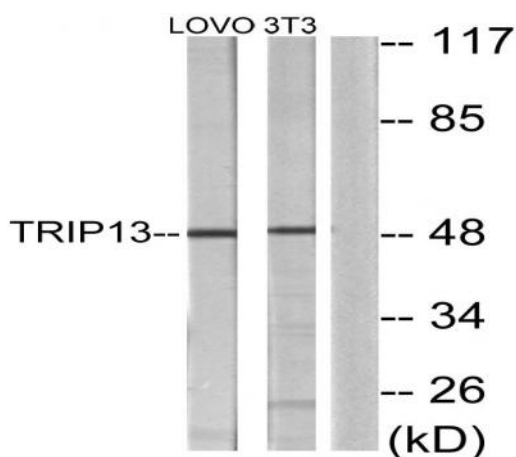


TRIP13 Polyclonal Antibody

Catalog No :	YT4738
Reactivity :	Human;Mouse;Rat
Applications :	WB;IHC;IF;ELISA
Target :	TRIP13
Gene Name :	TRIP13
Protein Name :	Pachytene checkpoint protein 2 homolog
Human Gene Id :	9319
Human Swiss Prot No :	Q15645
Mouse Gene Id :	69716
Mouse Swiss Prot No :	Q3UA06
Rat Gene Id :	292206
Rat Swiss Prot No :	Q5XHZ9
Immunogen :	The antiserum was produced against synthesized peptide derived from human TRIP13. AA range:383-432
Specificity :	TRIP13 Polyclonal Antibody detects endogenous levels of TRIP13 protein.
Formulation :	Liquid in PBS containing 50% glycerol, 0.5% BSA and 0.02% sodium azide.
Source :	Polyclonal, Rabbit,IgG
Dilution :	WB 1:500 - 1:2000. ELISA: 1:10000.. IF 1:50-200
Purification :	The antibody was affinity-purified from rabbit antiserum by affinity-chromatography using epitope-specific immunogen.

Concentration :	1 mg/ml
Storage Stability :	-15°C to -25°C/1 year(Do not lower than -25°C)
Observed Band :	48kD
Background :	This gene encodes a protein that interacts with thyroid hormone receptors, also known as hormone-dependent transcription factors. The gene product interacts specifically with the ligand binding domain. This gene is one of several that may play a role in early-stage non-small cell lung cancer. [provided by RefSeq, Oct 2009],
Function :	similarity:Belongs to the AAA ATPase family.,subunit:Specifically interacts with the ligand binding domain of the thyroid receptor (TR). This interaction does not require the presence of thyroid hormone for its interaction. Interacts with HPV16 E1.,
Subcellular Location :	male germ cell nucleus,nucleus,
Expression :	Lung,
Sort :	23551
No4 :	1
Host :	Rabbit
Modifications :	Unmodified

Products Images



Western blot analysis of lysates from LOVO and NIH/3T3 cells, using TRIP13 Antibody. The lane on the right is blocked with the synthesized peptide.