

TRIM16 Polyclonal Antibody

Catalog No :	YT4735
Reactivity :	Human;Mouse
Applications :	IHC;IF;ELISA
Target :	TRIM16
Gene Name :	TRIM16
Protein Name :	Tripartite motif-containing protein 16
Human Gene Id :	10626
Human Swiss Prot No :	O95361
Mouse Swiss Prot No :	Q99PP9
Immunogen :	The antiserum was produced against synthesized peptide derived from human TRIM16. AA range:31-80
Specificity :	TRIM16 Polyclonal Antibody detects endogenous levels of TRIM16 protein.
Formulation :	Liquid in PBS containing 50% glycerol, 0.5% BSA and 0.02% sodium azide.
Source :	Polyclonal, Rabbit,IgG
Dilution :	IHC 1:100 - 1:300. ELISA: 1:10000.. IF 1:50-200
Purification :	The antibody was affinity-purified from rabbit antiserum by affinity-chromatography using epitope-specific immunogen.
Concentration :	1 mg/ml
Storage Stability :	-15°C to -25°C/1 year(Do not lower than -25°C)
Molecularweight :	64kD

Background : This gene was identified as an estrogen and anti-estrogen regulated gene in epithelial cells stably expressing estrogen receptor. The protein encoded by this gene contains two B box domains and a coiled-coiled region that are characteristic of the B box zinc finger protein family. The proteins of this family have been reported to be involved in a variety of biological processes including cell growth, differentiation and pathogenesis. Expression of this gene was detected in most tissues. Its function, however, has not yet been determined. [provided by RefSeq, Jul 2008],

Function : function:May play a role in the regulation of keratinocyte differentiation.,similarity:Belongs to the TRIM/RBCC family.,similarity:Contains 1 B30.2/SPRY domain.,similarity:Contains 2 B box-type zinc fingers.,tissue specificity:Highest levels found in testis, ovary, small intestine, colon, placenta, heart, skeletal muscle and mammary gland. More highly expressed in the fetus than in the corresponding adult tissues. Expressed in basal keratinocytes.,

Subcellular Location : Cytoplasm .

Expression : Highest levels found in testis, ovary, small intestine, colon, placenta, heart, skeletal muscle and mammary gland. More highly expressed in the fetus than in the corresponding adult tissues. Expressed in basal keratinocytes.

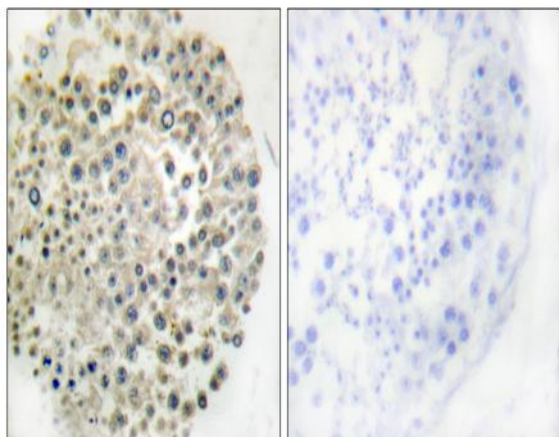
Sort : 23543

No4 : 1

Host : Rabbit

Modifications : Unmodified

Products Images



Immunohistochemistry analysis of paraffin-embedded human testis, using TRIM16 Antibody. The picture on the right is blocked with the synthesized peptide.