

## TRAPPC6A Polyclonal Antibody

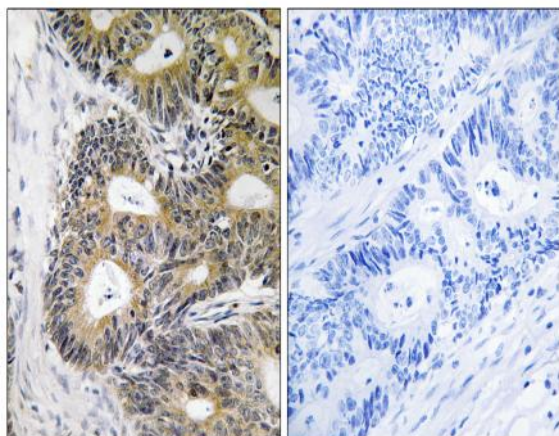
<b>Catalog No :</b>	YT4730
<b>Reactivity :</b>	Human;Mouse
<b>Applications :</b>	IHC;IF;ELISA
<b>Target :</b>	TRAPPC6A
<b>Gene Name :</b>	TRAPPC6A
<b>Protein Name :</b>	Trafficking protein particle complex subunit 6A
<b>Human Gene Id :</b>	79090
<b>Human Swiss Prot No :</b>	O75865
<b>Mouse Swiss Prot No :</b>	Q78XR0
<b>Immunogen :</b>	The antiserum was produced against synthesized peptide derived from human TRAPPC6A. AA range:31-80
<b>Specificity :</b>	TRAPPC6A Polyclonal Antibody detects endogenous levels of TRAPPC6A protein.
<b>Formulation :</b>	Liquid in PBS containing 50% glycerol, 0.5% BSA and 0.02% sodium azide.
<b>Source :</b>	Polyclonal, Rabbit,IgG
<b>Dilution :</b>	IHC 1:100 - 1:300. ELISA: 1:40000.. IF 1:50-200
<b>Purification :</b>	The antibody was affinity-purified from rabbit antiserum by affinity-chromatography using epitope-specific immunogen.
<b>Concentration :</b>	1 mg/ml
<b>Storage Stability :</b>	-15°C to -25°C/1 year(Do not lower than -25°C)
<b>Molecularweight :</b>	18kD

---

<b>Background :</b>	This gene encodes a component of the trafficking protein particle complex, which tethers transport vesicles to the cis-Golgi membrane. Loss of expression of the related gene in mouse affects coat and eye pigmentation, suggesting that the encoded protein may be involved in melanosome biogenesis. Alternatively spliced transcript variants encoding multiple isoforms have been observed for this gene. [provided by RefSeq, Aug 2012],
<b>Function :</b>	function:May play a role in vesicular transport during the biogenesis of melanosomes.,similarity:Belongs to the TRAPP small subunits family. BET3 subfamily.,subunit:Part of the multisubunit TRAPP (transport protein particle) complex. Heterodimer with TRAPPC3.,
<b>Subcellular Location :</b>	Golgi apparatus, cis-Golgi network . Endoplasmic reticulum .
<b>Expression :</b>	Lung,Umbilical cord blood,
<b>Sort :</b>	23508
<b>No4 :</b>	1
<b>Host :</b>	Rabbit
<b>Modifications :</b>	Unmodified

---

## Products Images



Immunohistochemistry analysis of paraffin-embedded human colon carcinoma, using TRAPPC6A Antibody. The picture on the right is blocked with the synthesized peptide.